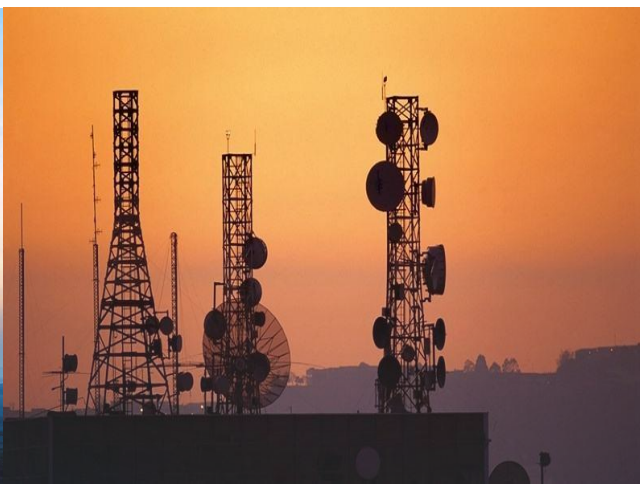




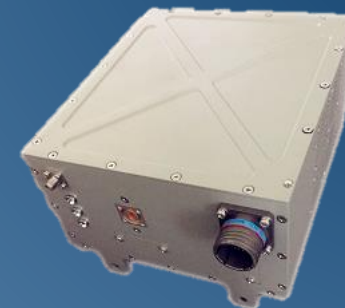
Solid State Power Amplifier Introduction

2020





Up to 50GHz Amplifiers

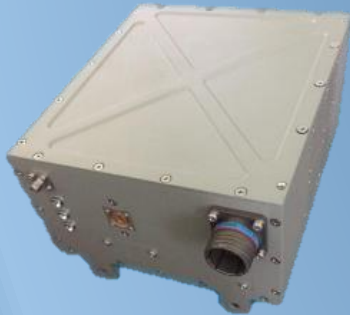


Frequency Range(GHz)	Gain(dB)	Psat (W)	Power Supply (V)
18~26.5	55	30	+22
18~26.5	55	50	+22
18~26.5	55	100	+22
27~31	50	50	+20
27~31	60	100	+20
27~31	60	200	+20
27~31	60	400	+20
33~36	50	50	+20
33~36	60	100	+20
33~36	60	250	+48
26.5~40	55	30	+20
26.5~40	55	50	+20
42~46	50	20	AC/220
42~46	60	100	AC/220
42~46	60	300	AC/220
42~47	14	8	+6

Note : Many more solutions available in different frequencies and power levels, please ask for inquiry.

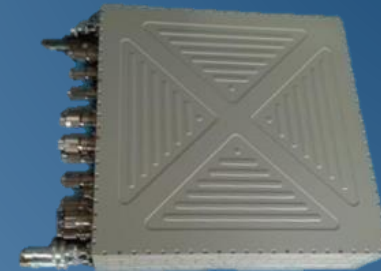


Up to 50GHz Amplifiers



33GHz~36GHz 250W

- Input signal: pulsed(30% max. duty cycle)
- Application: airborne(-40~+55°C)
- MTPF: ≥ 2000 h
- Peak power: ≥ 55 dBm
- Gain: ≥ 75 dB
- Small signal gain: ≥ 90 dB
- Power efficiency: $\geq 15\%$
- Control interface: RS422
- Dimension: 190*170*120mm



43.5GHz~45.5GHz 250W

- Input signal: CW
- Psat.: ≥ 55 dBm
- Gain: ≥ 65 dB
- P1dB: ≥ 53 dBm
- Small signal gain: ≥ 75 dB ± 2 dB
- 3rd Order intermodulation: ≥ 25 dBc@4dB total back-off from P1dB
- Cooling: Water cooling
- Control interface: Ethernet

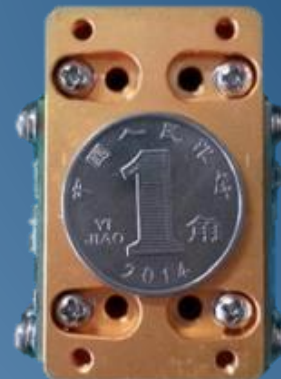


Up to 50GHz Amplifiers



43.5GHz~45.5GHz 1W

- Input signal: CW
- P1dB: $\geq 33\text{dBm}$
- P1dB Gain: $\geq 30\text{dB} \pm 1\text{dB}$
- 3rd Order intermodulation: $\geq 35\text{dBc}$ @ 4dB total back-off from P1dB
- Power efficiency: $\geq 12\%$
- Dimension: 50*50*45mm



42GHz~47GHz 8W

- Input signal: CW
- Psat.: $\geq 39\text{dBm}$
- Gain: $\geq 14\text{dB}$
- P1dB: $\geq 38\text{dBm}$
- Small signal gain: $\geq 16\text{dB}$
- Dimension: 39*23*14mm



Solid State Power Amplifiers

Skylink offers end-to-end RF & Microwave solutions for customers worldwide across a wide range of markets. The solid state power amplifier extends a broad frequency range from 0.5MHz to 50GHz and provides output power up to multi-kilowatts. Our staff intent to use the cutting-edge technology of RF power amplification to produce rugged, power efficient, and cost-effective solutions. It is our priority to design and deliver high quality products which address customer system and business requirements.

As a professional Hi-tech manufacture, quality first is our commitment to customers. In order to make sure that our products is highly qualified, we continue to invest heavily in purchasing specialized test equipment and all our products are 100% ESS tested. The strict incoming material inspection process guarantees all used material are qualified and all our products are guaranteed for 2 years after shipped from factory.

Skylink's SSPAs solutions cover from low power PA modules to high power BUCs.



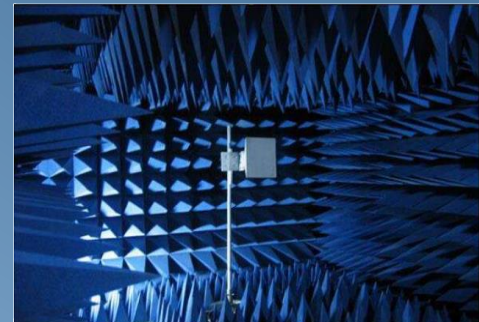
Communication SSPA

Satellite Communication
Scatter Communication
Telecommunication
UAV TT& C Data Link



Radar SSPA

Ground Based
Shipboard
Airborne
Commercial & Military



Broadband SSPA

Electronic Warfare
EMC Test
RCS Test
Radar Simulator



About Us

Chengdu Skylink Intellitech Co.,Ltd (Short named Skylink Microwave) was funded in 2015 by a group of experienced veterans in RF/Microwave industry for over 20 years individually. It is dedicated to providing state-of-the-art technology and uniformly high quality microwave components and assemblies to customers worldwide for both communication and test markets. It is our commitment to provide customers high reliability and field proven products to fulfill or exceed customers' needs and expectation. Our vision is to be a leading supplier of RF/MW components and assemblies in global market.

With the effort of our highly skilled R&D team, we have developed several product lines covering frequency from DC to 50GHz. Our custom engineered service helped customers to design the most complex products meeting the most exigent requirements. The advanced test equipment and the stringent quality control system assured product's quality and reliability.

Skylink was ISO9001 approved and all our products meet ISO9001 standard.

Product Lines

- SSPAs
- High power SSPAs
- BUCs/Transceivers
- Filters
- Diplexers/Multiplexers
- Switched filter banks
- Up Converters
- Down Converters
- BUCs/LNBs
- Pin Diode switches
- High power Pin Diode switches
- Switch matrices

Advantages

- Fast delivery from prototype : 6~8 weeks
- Cost-effective solutions
- Raw material expertise selection
- High quality and reliability
- Custom design available