

# GRANDWAY FH03000 SERIES OTDR

*High cost performance choice*



## FEATURES

Hand-held and portable

High cost performance

5-inch HD touch screen

Simple interface and one-button testing

Long working hours

Support multi-languages

## APPLICATIONS

CATV network testing

Access network testing

LAN/WAN network testing

Metro network testing

Lab and Factory testing

Real-time troubleshooting

## Easy testing with FHO3000 series OTDR

With its lightweight design and user friendly dimensions, MINI-OTDR is perfect for the outside plant environment and can easily managed with one hand.

MINI-OTDR ensure accurate and complete fiber evaluation while a simple testing sequence requires only one key press to start—allowing anyone to proceed error-free test. Its ease of use, low price, high-resolution and size make this the perfect product which is qualified in the normal installation, opening and maintenance of optical networks, also save you I lot of money and time.

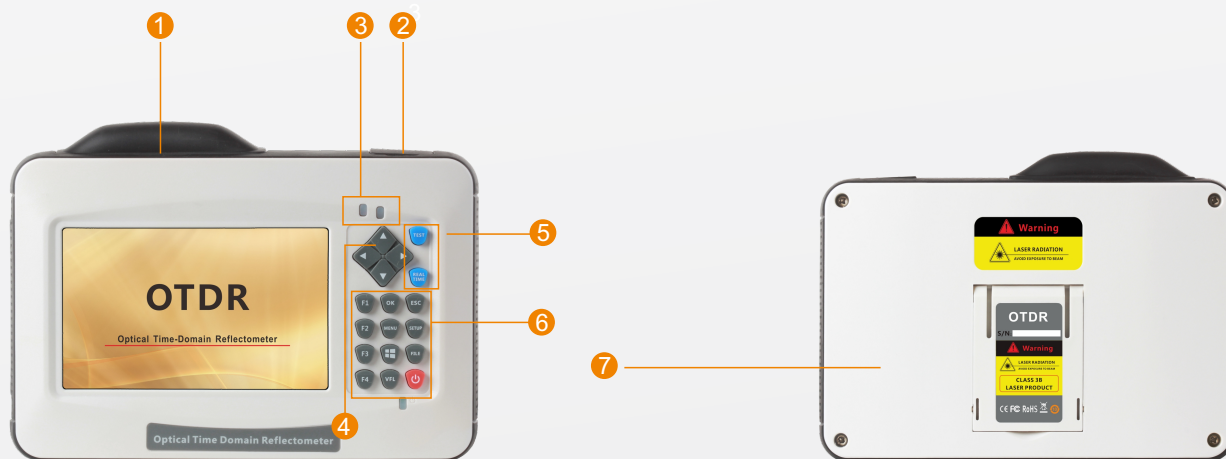




## Ideal for short fiber application

It is hard to find a cost effectively OTDR for testing short fibers. normal Fault Locators lacked the resolution and in short spans while common OTDR were too large, too expensive and too complicated.

The new MINI-OTDR from our company finally meet this need by providing all of the features and performance required for installation and maintenance of short fibers in a compact, mini hand-held test set. The MINI-OTDR represents an unmatched level of value and ease of use, while not compromising performance.

### Structure



- ① **Port 1:** Including OTDR testing port (FC/UPC), VFL Port (optional)×1, Power Meter Port (optional)×1 and touch pen×1
- ② **Port 2:** Including USB A type×2, micro-USB×1, SD card and charging port
- ③ **Indicator:** Indicate test state or charging state
- ④ **Navigator:** Move cursor menu or files
- ⑤ **Test Button:** Averaging test (TEST) button and real-time test (REALTIME) button
- ⑥ **Key area:** F1 ~ F4: select relevant sub-menu  
 OK: confirm button  
 ESC: cancel button  
 MENU: back to main menu  
 SETUP: enter testing parameter setting interface  
 FILE: enter file manager  
 VFL: visual fault locator menu  
 : take screen capture  
 : power button
- ⑦ **Support plate:** Support OTDR on the level surface

## Model

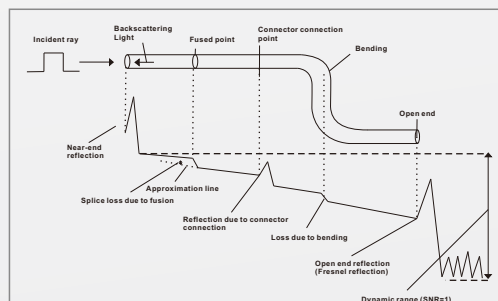
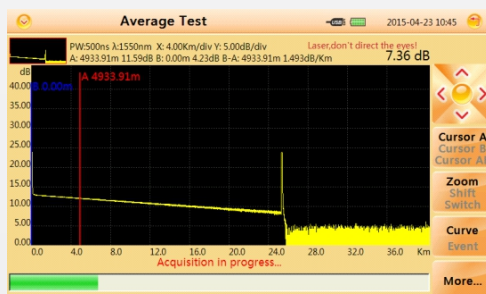
	Type	Testing wavelength	Dynamic range	Event/Attenuation dead-zone
1	FHO3000-D26	1310/1550nm	26/24dB	1.5/8m
2	FHO3000-D32	1310/1550nm	32/30dB	1.5/8m
3	FHO3000-D35	1310/1550nm	35/33dB	1.5/8m
4	FHO3000-SA30F	1650nm	30dB	1/6m
5	FHO3000-SA35F	1650nm	35dB	1/6m
6	FHO3000-SA38F	1650nm	38dB	1/6m

## Humanized Test Interface

FHO3000 series OTDR could display Splice loss, Connector loss, Fiber attenuation, Reflection of points, Link optical return loss and distance to fiber events, etc. With test information in a smart way, user could get detailed information immediately.

### Quick fit in short time

Simplified display style and structured menus help effective in reducing the time of study.



## Be smart with HD touch screen

The high resolution, true color, 5 inch touchscreen is the perfect format for viewing OTDR results. It provides excellent readability both indoors and outdoors.

### Touch and Test

Touch screen give user a smart way to operate OTDR, even you are wearing glove, you could use a touch pen to set or check testing parameter with a simple touch.



## Result transfer

Check test result on PC or PDA through USB; 4GB large internal memory space could store more than 40,000 groups of results.

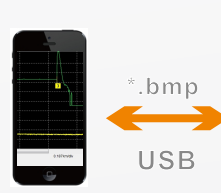
### Link in line

- Download reference traces and settings from database
- Send measurement result via e-mail
- Ask for remote help

### FHO3000-PC



### FHO3000-PDA



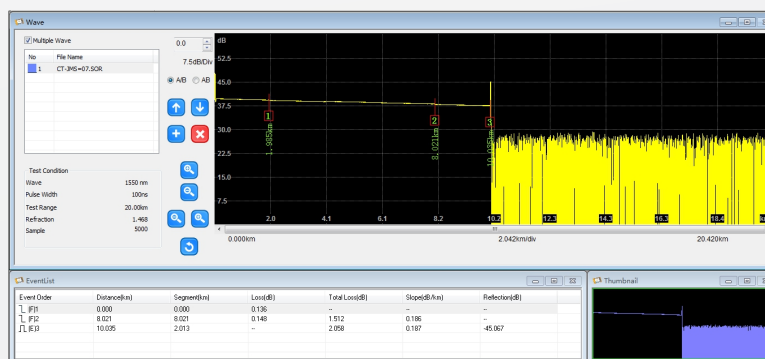
## Data Manager

Use Data manager to elaborate and print out result files on upper computer within a few steps.

### High Compatibility

#### ● Support:

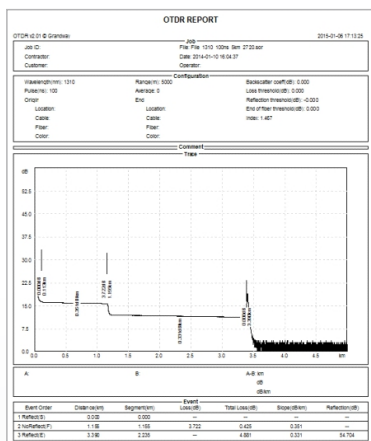
- Windows Vista (32/64 bit system)
- Windows 7 (32/64 bit system)
- Windows 8 (32/64 bit system)
- Microsoft Office Excel 2007
- Microsoft Office Excel 2010
- Microsoft Office Excel 2013



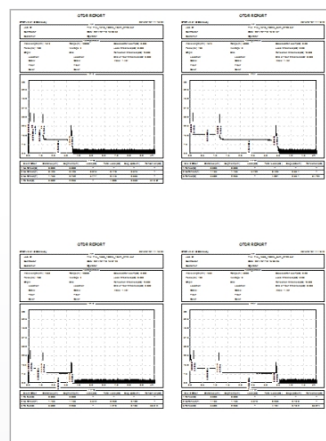


## ● Delicate Report

-Simplified display style easy to read, support multi-result printing.



1 in 1



4 in 1

## Specification

### General

<b>Display</b>	5 inch TFT-LCD (touch screen )
<b>Battery</b>	7.4V/3300mAh lithium battery (with air traffic certification) Continuously test: 6 hours (back light off)③ Charging time: 3.5 hours
<b>Data Storage</b>	40,000 groups of curves, 8G internal memory
<b>Interface</b>	3×USB port (USB A Type×2, Micro-USB×1)
<b>Working Temp</b>	-10℃~+50℃
<b>Storage Temp</b>	-20℃~+70℃
<b>Humidity</b>	≤95% (non-condensation)
<b>Dimension</b>	195×141×44mm / 0.9kg (battery included)
<b>Accessories</b>	Main unit, 12V power adapter, Lithium battery, FC adapter, USB cord, User guide, CD disk, carrying case, safe belt

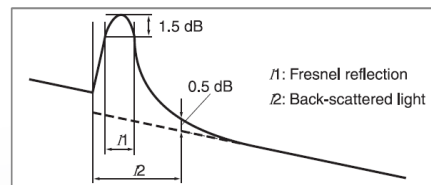
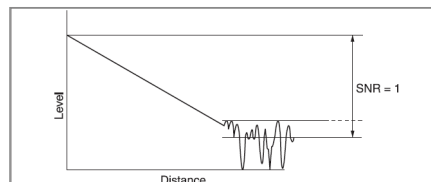
Technical parameter	
<b>Pulse Width</b>	3ns, 5ns, 10ns, 20ns, 50ns, 100ns, 200ns, 500ns, 1μs, 2μs, 5μs, 10μs, 20μs (only for D35)
<b>Testing Distance</b>	100m, 500m, 2km, 5km, 10km, 20km, 40km, 80km, 120km, 160km, 240km
<b>Sampling Resolution</b>	Minimum 5cm
<b>Sampling Point</b>	Maximum 128,000 points
<b>Linearity</b>	≤0.05dB/dB
<b>scale Indication</b>	X axis: 4~70m/div, Y axis: 0.09~5dB/div
<b>Loss Threshold</b>	0.01dB
<b>Loss Resolution</b>	0.001dB
<b>Distance Resolution</b>	0.01m
<b>Distance Accuracy</b>	±(1m+measuring distance×3×10 <sup>-5</sup> +sampling resolution) (excluding IOR uncertainty)
<b>Refractivity Setting</b>	1.2000~1.5999, 0.0001 step

VFL Module(Optional)	
<b>Wavelength</b>	650nm
<b>Power</b>	10mw, CLASSIII B
<b>Range</b>	12km
<b>Connector</b>	2.5mm metal universal connector
<b>Launching Mode</b>	CW/2Hz

OPM Module(Optional)	
<b>Wavelength Range</b>	800~1700nm
<b>Calibrated Wavelength</b>	850/1300/1310/1490/1550/1625/1650nm
<b>Test Range</b>	-60~+5dBm
<b>Resolution</b>	0.01dB
<b>Accuracy</b>	±0.35dB±1nW
<b>Connector</b>	2.5mm metal universal connector

## Notes

- ① Dynamic range is measured with maximum pulse width, averaging time is 3 minutes, SNR=1; The level difference between the RMS noise level and the level where near end back-scattering occurs.
- ② Event dead zone is measured with pulse width of 3ns; attenuation dead zone is measured with pulse width of 5ns.
- ③ Typical, back light off, sweeping halted at 25°C, 6 hours typical continuous testing.



## Ordering Information

FHO3000-XX-XX-XX-XX

### Dynamic Range

**D26** 26dB  
**D32** 32dB  
**D35** 35dB  
**SA30F** 30dB  
**SA35F** 35dB  
**SA38F** 38dB

### Visual Fault Locator

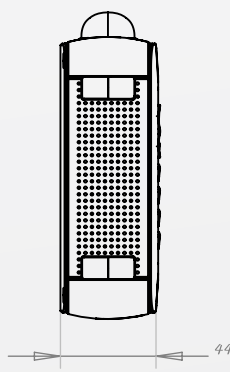
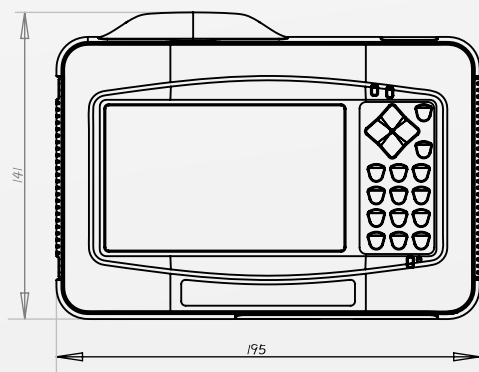
**/** Without Visual Fault Locator  
**VFL** With Visual Fault Locator

### Connector

**/** FC/UPC(default)  
**SC** SC/UPC  
**ST** ST/UPC

### Power Meter

**/** Without power meter  
**PM** With power meter



Unit:mm

Except where noted, tolerance default as:±3%

(if size<10mm, tolerance:±0.3mm)

★ Product specifications and descriptions in this document subject to change without notice.

---

**Shanghai Grandway Telecom Tech. Co., Ltd**

Add:6F, Xin'an Building, NO.99, Tianzhou Rd,Shanghai P.R.C

Postcode:200233

Tel:+86-21-67756462

Fax:+86-21-67756466

Email: [overseas@grandway.com.cn](mailto:overseas@grandway.com.cn)

Shanghai Grandway Telecom Tech.co.,Ltd, registered in 1994, is a shareholding company which is professionally engaged in the integration and service of customized projects of deployment and detection of optical communication network. Of course, grandway is also one of the biggest national supplier of optical communication meters and equipments.The products of grandway are sold all around the world, and gain the praise.

