



Компактные сенсорные рефлектометры EXFO MaxTester 715B (30 дБ), EXFO MaxTester 720B (36 дБ), EXFO MaxTester 730B (39 дБ)



## Основные характеристики

- ультракомпактный и недорогой рефлектометр
- представление результатов в виде рефлектограммы, а также в виде схемы оптоволоконной линии - режим iOLM (опция)
- встроенный измеритель мощности (опция) и визуальный дефектоскоп VFL (опция)
- стабильный источник излучения (опция)
- проведение измерений на активных оптических сетях с использованием длины волны 1625 нм (опция)
- поддержка микроскопа EXFO FIP-400B
- интерфейсы: USB, Ethernet, Wi-Fi (опция), Bluetooth (опция)
- 2 Гб встроенной памяти (до 20 000 рефлектограмм) + подключение флешек
- автономность работы: до 12 часов
- сенсорный широкоформатный экран 17,8 см
- прочный и удобный дизайн корпуса
- масса с аккумулятором: 1,3 кг

Новая серия (2013 года) недорогих компактных сенсорных рефлектометров EXFO MaxTester 700B включает три модели: **MaxTester 715B** (с динамическим диапазоном до 30 дБ), **MaxTester 720B** (с динамическим диапазоном до 36 дБ) и старшую модель **MaxTester 730B** (с динамическим диапазоном до 39 дБ). Новые оптические рефлектометры MaxTester выгодно отличаются по всем ключевым показателям: невысокая цена, отличные измерительные характеристики, мощный процессор, сенсорный экран, прочный и удобный дизайн корпуса, а также длительное время автономной работы.

## Рефлектометры EXFO MaxTester совместимы с микроскопом EXFO FIP-400B

По статистике более половины всех отказов на работающей оптической сети возникает из-за проблем, связанных с коннекторами (патчкордами и патчпанелями). С помощью микроскопа **EXFO FIP-400B** можно визуально оценить качество полировки и степень загрязнения оптических коннекторов, а программное обеспечение **ConnectorMax2** позволяет полностью автоматизировать проверку коннекторов на соответствие стандартам IEC (МЭК), IPC, а также критериям, заданным пользователем.



## Компактный размер и отличные характеристики новых сенсорных рефлектометров EXFO MaxTester



Компактность EXFO MaxTester



Рефлектометр MaxTester (вид сверху)

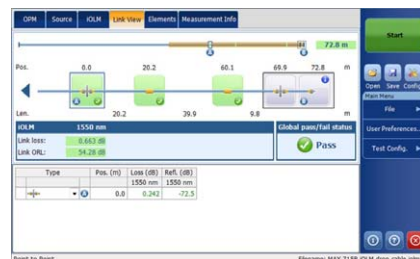


Схема волоконной линии (режим iOLM)

Рефлектометры серии MaxTester используют самые современные оптические компоненты, благодаря которым обеспечиваются рекордно малые мёртвые зоны: до 0,8 метра по событию (EDZ) и до 3,5 метра по затуханию (ADZ).

	MAX-715B	MAX-720B	MAX-730B
Длины волн, нм	1310 / 1550 1625 (опция)	1310 / 1550	1310 / 1550 1625 (опция)
Динамический диапазон, дБ	30 / 28 28 (на 1625 нм)	36 / 34	39 / 37 37 (на 1625 нм)
Мёртвая зона по событию (EDZ), м	1	0,8	0,8
Мёртвая зона по затуханию (ADZ), м	4	3,5	3,5
Дальность, км	от 0,1 до 160	от 0,1 до 260	от 0,1 до 400
Ширина импульса	от 5 нс до 20 мкс	от 5 нс до 20 мкс	от 5 нс до 20 мкс
Разрешающая способность по расстоянию, м	от 0,04 до 5	от 0,04 до 5	от 0,04 до 5
Количество точек	до 256 000	до 256 000	до 256 000

- тип измерителя мощности: GeX (опция)
- масса с аккумулятором: 1,3 кг
- габариты: 200 × 155 × 68 мм
- рабочая температура: от -10 °C до +50 °C



EXFO MaxTester 720B (вид сзади)

# Специальный ДИПЛОМ

Награждается компания

**ТЕХЭНКОМ**

за инновационные решения,  
представленные на  
11 Международной выставке  
индустрии телерадиовещания и  
телекоммуникаций

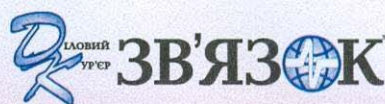
**Сварочный аппарат для оптоволокна Fujikura 80S**

**Оптический рефлектометр EXFO MaxTester серии  
700B**



[www.tehencom.com](http://www.tehencom.com)





# ЕЕВС/expoTel Highlights 2013

**Лучший инновационный продукт  
(решение) выставок  
ЕЕВС 2013 и expoTEL 2013**

**The best innovation product/solution  
of EEBC 2013 and expoTEL 2013**

**Рефлектометр  
EXFO Max Tester 730B**

**«Техэнком»**

[www.tehencom.com](http://www.tehencom.com)



# MaxTester 720B Access OTDR

OPTIMIZED FOR SHORT POINT-TO-POINT (P2P) CONSTRUCTION



**iOLM**  
READY

Fully featured, entry-level, dedicated OTDR with tablet-inspired design perfect for everyday field-testing in any singlemode access network construction.

## KEY FEATURES

Handy, lightweight, powerful, tablet-inspired design

7-inch, outdoor-enhanced touchscreen – the biggest in the handheld industry

12-hour autonomy

Dead zones: EDZ 0.8 m, ADZ 3.5 m

Dynamic range: 36/34 dB

Rugged design built for outside plant

iOLM-ready: intelligent and dynamic application that turns complex OTDR trace analysis into a one-touch task

## APPLICATIONS

Access network construction

Private networks

Central office (CO) link certification

## COMPLEMENTARY PRODUCTS AND OPTIONS



Data Post-Processing Software  
FastReporter 2



Soft Pulse Suppressor Bag  
SPSB



Fiber Inspection Probe  
FIP-400B

**EXFO**

## THE HANDHELD OTDR... REINVENTED.

The MAX-700B series is the first tablet-inspired OTDR line that is handy, lightweight and rugged enough for any outside plant environment. With a 7-inch, outdoor-enhanced touchscreen—the most efficient handheld display in the industry—it delivers an unprecedented user experience. Its intuitive Windows-like GUI ensures a fast learning curve. Plus, its new and improved OTDR2.0 environment offers icon-based functions, instant boot-up, automatic macrobend finders as well as improved auto and real-time modes.

The Max-700B series is a line of genuine high-performance OTDRs from the world's leading manufacturer. It delivers EXFO's tried and true OTDR quality and accuracy along with the best optical performance for right-first-time results, every time.

The amazing 12-hour battery life will never let a technician down, and the plug-and-play hardware options, like the VFL, power meter and USB tools, make every technician's job easier.

Most importantly, the Max-700B series is finally bringing the iOLM, an intelligent OTDR-based application, to the handheld market. This advanced software turns even the most complex trace analysis into a simple, one-touch task.

Ultimately, the Max-700B series is small enough to fit in your hand and big enough to fit all your needs!

## THE PORTAL SOLUTION DESIGNED FOR ALL YOUR TESTING NEEDS

The MAX-720B OTDR/iOLM features a dynamic range of 36 dB and 0.8-3.5 m dead zones. This ensures the efficient testing of closely spaced events, such as patchcords and patch panels in COs. It is also optimized for the point-to-point testing of any access network.

Other models available :

- › MAX-715B Last-mile for FTTH drop-cable installation and troubleshooting (30 dB)
- › MAX-730B FTTH/PON installation and maintenance for testing through optical splitters and short P2P metro (39 dB)

### REMOVING THE COMPLEXITY FROM THE OTDR

#### iOLM | intelligent Optical Link Mapper

Launch multiple OTDR acquisitions



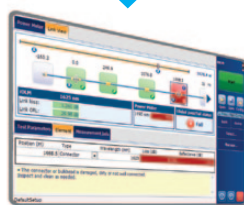
Analyze the traces



Compound the results



Display a schematic link view and prompt diagnosis



US patent 6,612,750

Using a unique and patented automated multipulse and multi-wavelength acquisition approach, the field-proven iOLM surpasses the traditional OTDR and linear view for expert-level link characterization of any fiber network.

This dynamic OTDR-based application uses EXFO's most advanced algorithms to deliver detailed information and maximum resolution on every element of the link. Thanks to its unmatched intelligence and simplicity, the iOLM converts complex OTDR tests into clear and accurate go/no-go results, through a single button operation.

- › Hardware optimized and intelligent software for maximum performance
- › Multiple acquisitions, multiple wavelengths with one button—all automated
- › Expert-level characterization results in a single, comprehensive report
- › The fastest and hassle-free way to perform full fiber characterization
- › No training required: self-setting device with clear go/no-go results
- › Minimized truck rolls, thanks to the smartest analysis, powered by Link-Aware™ technology

Powered by  
**LINK-AWARE™**  
 TECHNOLOGY

#### Three ways to benefit from the iOLM:

##### OTDR combo (Oi code)

Run iOLM and OTDR applications on one unit

##### Upgrade

Add iOLM software option, even while in the field

##### iOLM only

Order a unit with the iOLM application only

## AUTOMATED AND INTELLIGENT FIBER INSPECTION PROBE

Neglecting to clean, inspect and certify connectors will lead to serious, time-consuming problems that account for up to 80% of network failures. Thanks to years of field experience, EXFO has been able to re-engineer a major, patent-pending, fiber-inspection probe, the FIP-400B, which is designed to both simplify and speed up this critical step of network construction.

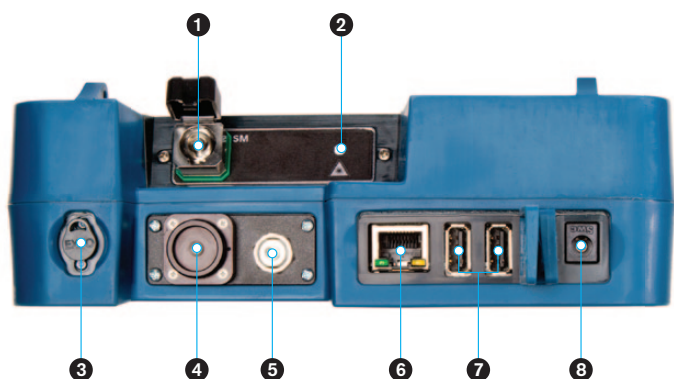
When paired with ConnectorMax2, the FIP-400B can objectively analyze connector cleanliness based on IEC, IPC and user-defined standards. Plus, the auto-centering feature cuts inspection time in half, especially in patch panels and hard-to-reach connectors. This inspection tool, which is exclusive to EXFO, is equipped with a pass/fail LED indicator that provides a clear diagnosis in the palm of your hand.



SOFTWARE UTILITIES	
Software update	Ensure that your MaxTester is up-to-date with the latest software.
VNC configuration	The Virtual Network Computing utility allows technicians to easily remote control the unit via a computer or laptop.
Microsoft Internet Explorer	Access the Web directly from your device interface.
Data mover	Transfer all your daily test results quickly and easily.
Centralized documentation	Instant access to user guides and other relevant documents.
Wallpapers	Enhance your work environment with colorful and scenic backgrounds.
PDF Reader	View your reports in PDF format.
Bluetooth file sharing	Share files between your MaxTester and any Bluetooth-enabled device.
Wi-Fi connection	Upload test results and browse the internet.
Inspection probe	USB probe to inspect and analyze connectors.

## PACKAGED FOR EFFICIENCY

- |  |  |  |
|--|--|--|
| <ul style="list-style-type: none"> <li>❶ Singlemode OTDR port</li> <li>❷ Testing LED indicator</li> <li>❸ Stylus</li> <li>❹ Power meter</li> <li>❺ Visual fault locator</li> </ul> | <ul style="list-style-type: none"> <li>❻ 10/100 Mbit/s Ethernet port</li> <li>❼ Two USB 2.0 ports</li> <li>❽ AC adapter</li> <li>❾ Home/switch application and screen capture (hold)</li> <li>❿ Power on/off/stand by</li> </ul> | <ul style="list-style-type: none"> <li>⓫ Battery LED status</li> <li>⓬ Built-in Wi-Fi/Bluetooth</li> </ul> |
|--|--|--|



SPECIFICATIONS<sup>a</sup> (Preliminary)

TECHNICAL SPECIFICATIONS	MAXTESTER 720B
Display	7 in (178 mm) outdoor-enhanced touchscreen, 800 x 480 TFT
Interfaces	Two USB 2.0 ports RJ-45 LAN 10/100 Mbit/s
Storage	2 GB internal memory (20 000 OTDR traces, typical)
Batteries	Rechargeable lithium-polymer battery 12 hours of operation as per Telcordia (Bellcore) TR-NWT-001138
Power supply	Power supply AC/DC adapter, input 100-240 VAC, 50-60 Hz, 9-16 V DCIN 15 Watts minimum
Wavelength (nm) <sup>b</sup>	1310/1550
Dynamic range (dB) <sup>c</sup>	36/34
Event dead zone (m) <sup>d</sup>	0.8
Attenuation dead zone (m) <sup>e</sup>	3.5
Distance range (km)	0.1 to 260 km
Pulse width (ns)	5 ns to 20 us
Linearity (dB/dB)	±0.03
Loss threshold (dB)	0.01
Loss resolution (dB)	0.001
Sampling resolution (m)	0.04 to 5
Sampling points	Up to 256 000
Distance uncertainty (m) <sup>f</sup>	±(0.75 + 0.0025 % x distance + sampling resolution)
Measurement time	User-defined (60 min. maximum)
Reflectance accuracy (dB)	±2
Typical real-time refresh (Hz)	3
Laser safety	1M

**Notes**

a. All specifications valid at 23 °C ± 2 °C with an FC/APC connector, unless otherwise specified.

b. Typical.

c. Typical dynamic range with longest pulse and three-minute averaging at SNR = 1.

d. Typical, for reflectance above -55 dB, using a 5-ns pulse.

e. Typical, for reflectance below -55 dB, using a 5-ns pulse. Attenuation dead zone at 1310 nm is 4.5 m typical with reflectance below -45 dB

f. Does not include uncertainty due to fiber index.



## GENERAL SPECIFICATIONS

Size (H x W x D)	200 mm x 155 mm x 68 mm (7 7/8 in x 6 1/8 in x 2 3/4 in)
Weight (with battery)	1.29 kg (2.8 lb)
Temperature	Operating Storage
	–10 °C to 50 °C (14 °F to 122 °F) –40 °C to 70 °C (–40 °F to 158 °F) <sup>a</sup>
Relative humidity	0 % to 95 % noncondensing

## SOURCE (optional)

Output power (dBm) <sup>b</sup>	–6
Modulation	CW, 1 kHz, 2 kHz

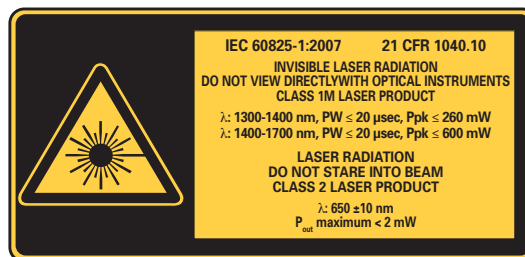
## BUILT-IN POWER METER SPECIFICATIONS (GeX) (optional) <sup>c</sup>

Calibrated wavelengths (nm)	850, 1300, 1310, 1490, 1550, 1625, 1650
Power range (dBm) <sup>d</sup>	27 to –50
Uncertainty (%) <sup>e</sup>	±5 % ± 10 nW
Display resolution (dB)	0.01 = max to –40 dBm 0.1 = –40 dBm to –50 dBm
Automatic offset nulling range <sup>d,f</sup>	Max power to –34 dBm
Tone detection (Hz)	270/330/1000/2000

## VISUAL FAULT LOCATOR (VFL) (OPTIONAL)

Laser, 650 nm ± 10 nm
CW/Modulate 1 Hz
Typical P <sub>out</sub> in 62.5/125 µm: > –1.5 dBm (0.7 mW)
Laser safety: Class 2

## LASER SAFETY



COMPLIES WITH 21 CFR 1040.10  
EXCEPT FOR DEVIATIONS PURSUANT  
TO LASER NOTICE NO.50,  
DATED JUNE 24, 2007.

## ACCESSORIES

GP-10-092	Semi-rigid carrying case	GP-2016	10-foot RJ-45 LAN cable
GP-10-093	Rigid carrying case	GP-2144	USB 16G micro-drive
GP-302	USB mouse	GP-2155	Carry-on size backpack
GP-1008	VFL adapter (2.5 mm to 1.25 mm)	GP-2205	DC vehicle battery-charging adaptor (12 V)
GP-2001	USB keyboard	GP-2207	Stand support

### Notes

- 20 °C to 60 °C (–4 °F to 140 °F) with the battery pack.
- Typical output power is given at 1550 nm.
- At 23 °C ± 1 °C, 1550 nm and FC connector. With modules in idle mode. Battery operated after 20-minute warm-up.
- Typical.
- At calibration conditions.
- For ±0.05 dB, from 10 °C to 30 °C.

## ORDERING INFORMATION

MAX-720B-XX-XX-XX-XX-XX-XX-XX-XX

### Model ■

M1 = Access OTDR, 1310/1550 nm (9/125 μm)

### Connectivity ■

RF = With RF capability (Wi-Fi and Bluetooth)

### Connector ■

EA-EUI-28 = APC/DIN 47256  
 EA-EUI-89 = APC/FC narrow key  
 EA-EUI-91 = APC/SC  
 EA-EUI-95 = APC/E-2000  
 EA-EUI-98 = APC/LC  
 EI-connectors = See note below

### OTDR software options ■

OTDR = Enables OTDR application only  
 iOLM = Enables the iOLM application only  
 Oi = Enables OTDR and iOLM applications

### Software options

00 = Without any software option  
 SRC = Source through OTDR port

### Connector adapter<sup>a</sup>

FOA-12 = Biconic  
 FOA-14 = NEC D4: PC, SPC, UPC  
 FOA-16 = SMA/905, SMA-906  
 FOA-22 = FC/PC, FC/SPC, FC/UPC, FC/APC  
 FOA-28 = DIN 47256, DIN 47256/APC  
 FOA-32 = ST: ST/PC, ST/SPC, ST/UPC  
 FOA-54 = SC: SC/PC, SC/SPC, SC/UPC, SC/APC  
 FOA-78 = Radiall EC  
 FOA-96B = E-2000/APC  
 FOA-98 = LC  
 FOA-99 = MU

### Power meter

00 = Without power meter  
 PM2X = Power meter; GeX detector  
 VPM2X = VFL and power meter; GeX detector

### Inspection Probe

00 = Without probe  
 FP410B = Digital video inspection probe, triple magnification  
 FP420B = Digital video inspection probe<sup>b</sup>

Example: MAX-720B-M1-EA-EUI-91-Oi-VPM2X-FOA-22-SRC

### Note

- If power meter is selected.
- Includes ConnectorMax2 analysis software, triple magnification and auto-centering feature.

## EI CONNECTORS



To maximize the performance of your OTDR, EXFO recommends using APC connectors. These connectors generate lower reflectance, which is a critical parameter that affects performance, particularly in dead zones. APC connectors provide better performance than UPC connectors, thereby improving testing efficiency.

For best results, APC connectors are mandatory with the iOLM application.

Note: UPC connectors are also available. Simply replace EA-XX by EI-XX in the ordering part number. Additional connectors available are the EI-EUI-76 (UPC/HMS-10/AG) and EI-EUI-90 (UPC/ST).

EXFO Headquarters > Tel.: +1 418 683-0211 | Toll-free: +1 800 663-3936 (USA and Canada) | Fax: +1 418 683-2170 | [info@EXFO.com](mailto:info@EXFO.com) | [www.EXFO.com](http://www.EXFO.com)

EXFO serves over 2000 customers in more than 100 countries. To find your local office contact details, please go to [www.EXFO.com/contact](http://www.EXFO.com/contact).

EXFO is certified ISO 9001 and attests to the quality of these products. This device complies with Part 15 of the FCC Rules. Operation is subject to the following two conditions: (1) this device may not cause harmful interference, and (2) this device must accept any interference received, including interference that may cause undesired operation. EXFO has made every effort to ensure that the information contained in this specification sheet is accurate. However, we accept no responsibility for any errors or omissions, and we reserve the right to modify design, characteristics and products at any time without obligation. Units of measurement in this document conform to SI standards and practices. In addition, all of EXFO's manufactured products are compliant with the European Union's WEEE directive. For more information, please visit [www.EXFO.com/recycle](http://www.EXFO.com/recycle). Contact EXFO for prices and availability or to obtain the phone number of your local EXFO distributor.

For the most recent version of this spec sheet, please go to the EXFO website at [www.EXFO.com/specs](http://www.EXFO.com/specs).

In case of discrepancy, the Web version takes precedence over any printed literature.

Keep this document for future reference.