



AXS-200 SharpTESTER

ACCESS LINE

EXFO

EXPERTISE REACHING OUT

www.EXFO.com

The SharpTESTER Access Line

Multiservice testing and easy problem-solving: A perfect match

Introducing **SharpTESTER**, an all-new series of handhelds that extends EXFO's multimediatest expertise all the way down to the access network. Featuring a combined multilayer and multimediatesting approach, **SharpTESTER** goes beyond traditional performance assessment and fault characterization: it delivers accurate pinpointing for every part of your network—a ready-made solution to your network's flaws.

Razor-sharp, ultra-flexible, yet affordable.
It's the new authority in access network testing.



- **Copper, fiber and data testing** configurations on a single platform and a **common graphical user interface (GUI)**
- Configurable **DSL triple-play, fiber characterization and Ethernet** test functionalities
- **One-touch testing functions**, for quick, fail-safe **multiservice** and **multilayer** analysis

Designed to evolve with your network

It's a fact: over time, customer needs change, driving the evolution of your network. Bandwidth-hungry killer applications such as broadband IPTV are becoming increasingly entrenched in the telecommunications consumer market, and network infrastructures must follow these trends and anticipate the related technology issues.

Designed with this in mind, the **SharpTESTER Access Line** is built around the AXS-200, a small handheld platform that offers a common intelligent interface for its **three series of modules**— **Ethernet**, **copper/DSL/triple-play** and **optics**— providing network technicians with a full-fledged multiservice/multimedium test solution.

The **AXS-200 SharpTESTER** platform. Three series of modules.

Ethernet

- Highly efficient installation and maintenance testing for Ethernet circuits
- BER and connectivity testing, RFC 2544 performance assurance

Copper/DSL/Triple-Play

- Complete local-loop testing with a bandwidth of up to 30 MHz
- ADSL1/2/2+, VDSL2 and Ethernet-based analysis of triple-play services (VoIP, IPTV, data)

Optics

- First-class physical-layer testing within fiber access links
- Combined OTDR and power meter functionalities
- Fiber certification



- 1 Quick-test button
- 2 Extended memory of 512 MB
- 3 Application-specific LED indicators
- 4 Advanced TFT transfective display
- 5 Built tough

The SharpTESTER Access Line

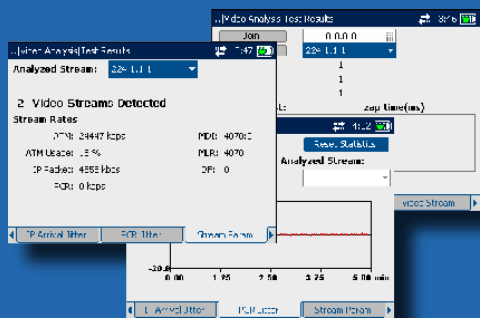
Truly intuitive software, for streamlined field testing cycles

Now more than ever, the operative word is *efficiency*. Network operators are constantly looking for ways to shorten test cycles and enable their field crews to speed up link deployment and troubleshooting procedures.

SharpTESTER relies on truly intuitive software that keeps efficiency front and center, providing unprecedented test automation.

1. Advanced data analysis and post-processing features

Provides the user with a straightforward view of all key results and simplifies their interpretation



Result windows summed up in a handy summary screen



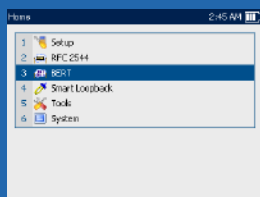
A lot of information requires expert analysis...

...but the Summary screen makes everything simpler.

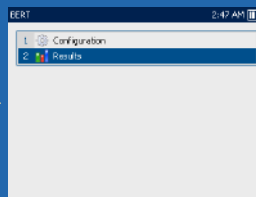
2. Truly intuitive GUI

Features time-saving shortcut keys, boosting field-testing efficiency

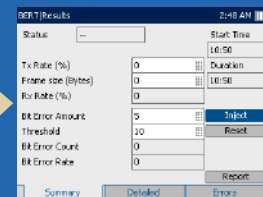
Select test by pressing "3" on the numeric keypad



Check the Results page by pressing "2" on the numeric keypad



Launch test and wait for results

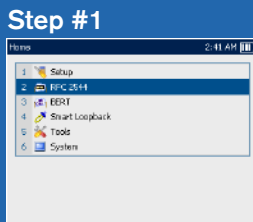


Ethernet RFC 2544 test example

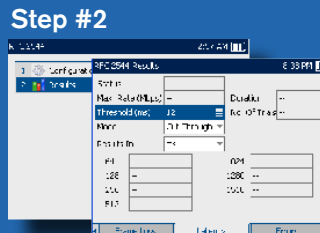
3. Plug-and-test user-friendliness

One-touch testing functions available for each type of test, for fast, error-free results

Select test



Push the "Quick-Test" button and get results



Ethernet BER test example

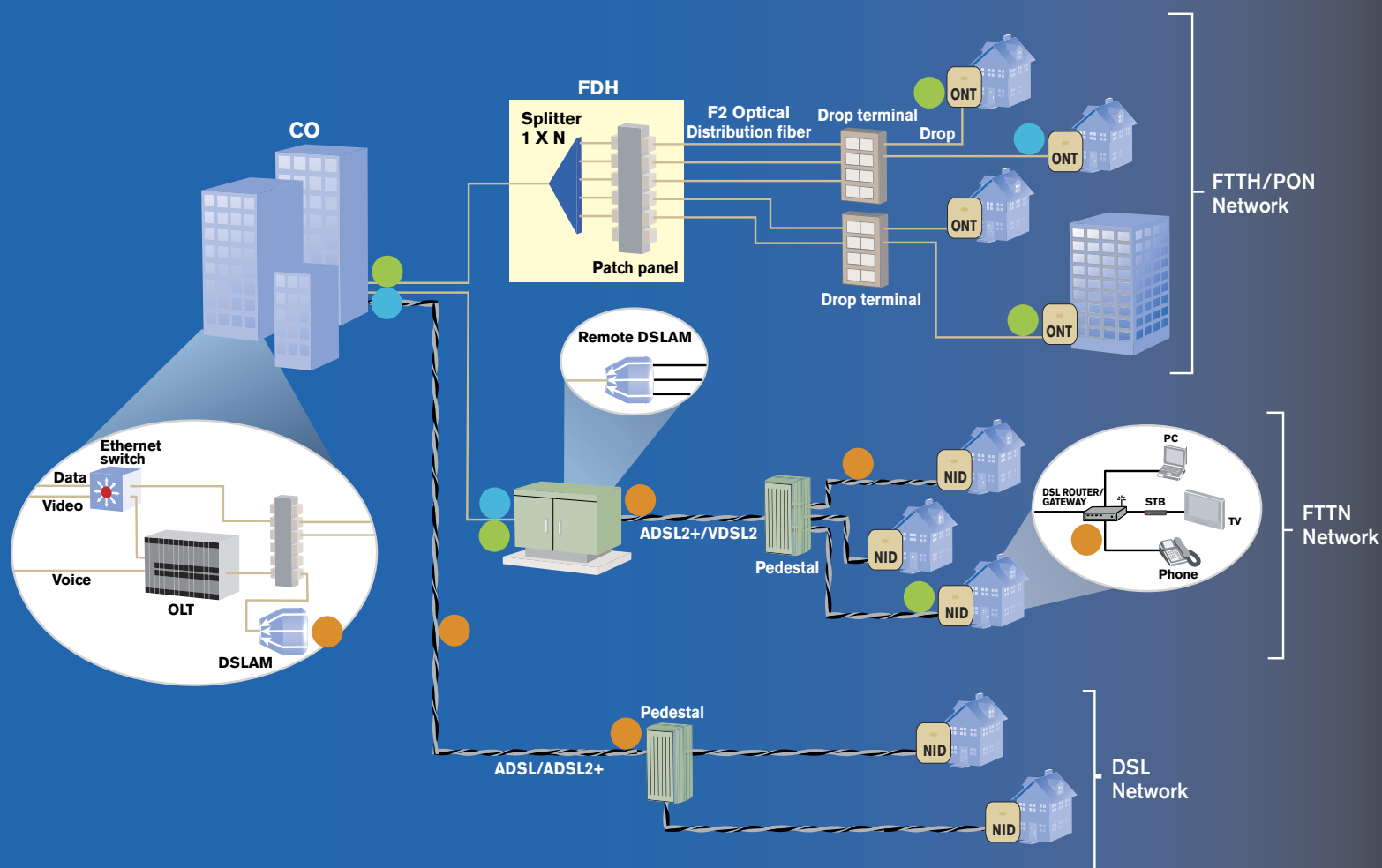
4. A common Windows CE-based graphical user interface (GUI) for all test configurations

Reduces the need for training and allows both expert and entry-level technicians to quickly get on track

5. Clear pass/fail assessment

✓ or ✗ displayed on the unit's TFT color screen

At home in residential networks



Applications

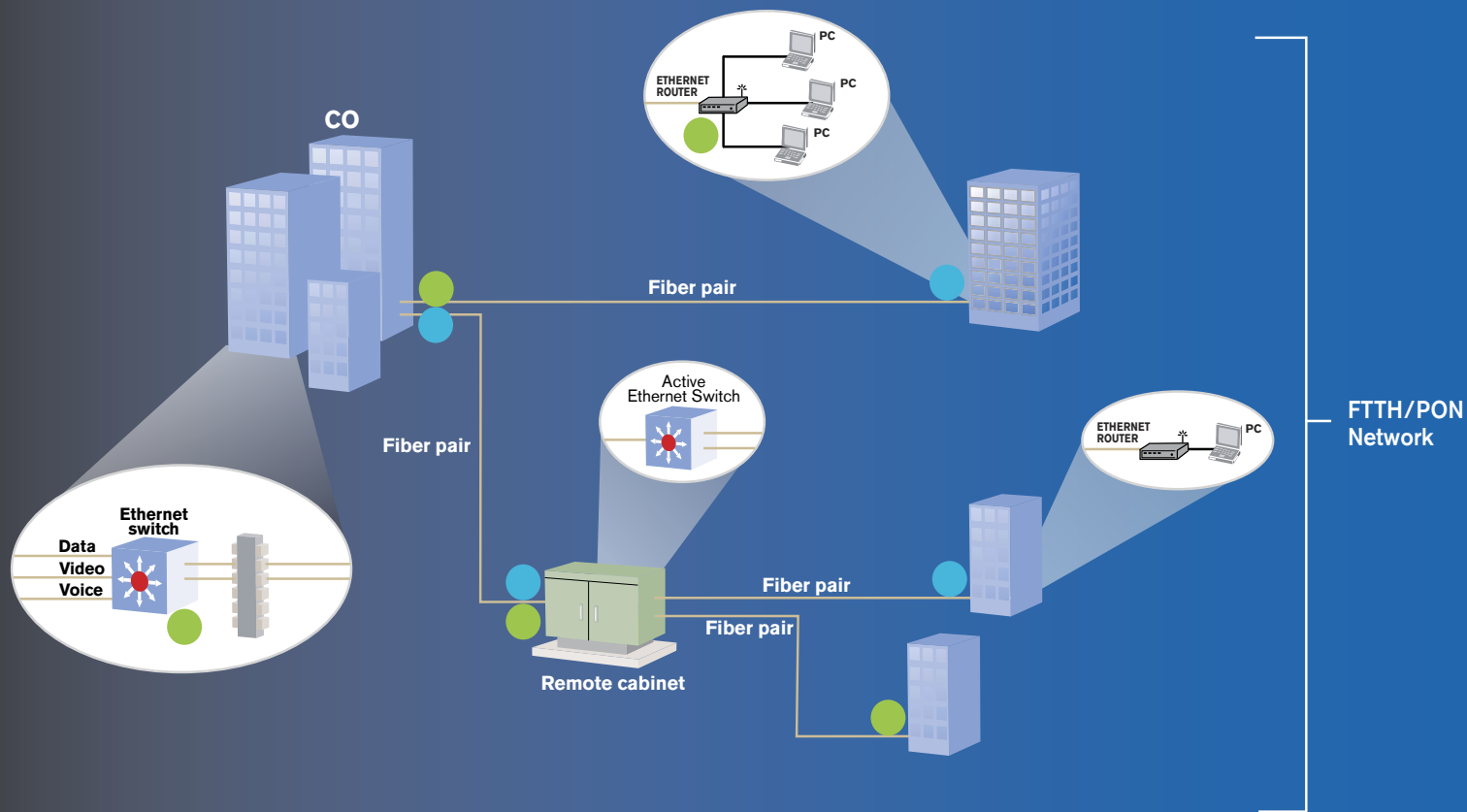
- **Copper/DSL/Triple-Play**
 - 30 MHz spectrum analysis
 - Local-loop fault location troubleshooting and xDSL prequalification
 - xDSL service verification
 - IPTV and VoIP QoS analysis

- **Ethernet**
 - RFC 2544 performance qualification
 - BER testing for service turn-up
 - Connectivity and installation tests using basic IP test tools

- **Optics**
 - Fiber characterization
 - End-to-end loss testing
 - Fiber fault location

The SharpTESTER Access Line

Getting down to business in commercial networks



Applications

Ethernet

- RFC 2544 performance qualification
- BER testing for service turn-up
- Connectivity and installation tests using basic IP test tools

Optics

- Fiber characterization
- End-to-end loss testing
- Fiber fault location

EXFO Corporate Headquarters > 400 Godin Avenue, Quebec City (Quebec) G1M 2K2 CANADA | Tel: 1 418 683-0211 | Fax: 1 418 683-2170 | info@EXFO.com

Toll-free: 1 800 663-3936 (USA and CANADA) | www.EXFO.com

EXFO America	3701 Plano Parkway, Suite 160 Plano, TX 75075 USA	Tel.: 1 800 663-3936	Fax: 1 972 836-0164
EXFO Europe	Omega Enterprise Park, Electron Way Chandlers Ford, Hampshire S053 4SE ENGLAND	Tel.: +44 2380 246810	Fax: +44 2380 246801
EXFO Asia	151 Chin Swee Road, #03-29 Manhattan House SINGAPORE 169876	Tel.: +65 6333 8241	Fax: +65 6333 8242
EXFO China	No.88 Fuhua First Road Central Tower, Room 801, Futian District Beijing New Century Hotel Office Tower, Room 1754-1755 No. 6 Southern Capital Gym Road	Shenzhen 518048 CHINA Beijing 100044 P. R. CHINA	Tel.: +86 (755) 8203 2300 Tel.: +86 (10) 6849 2738 Fax: +86 (755) 8203 2306 Fax: +86 (10) 6849 2662