

User Guide

Anritsu

VNA Master

MS2024B, MS2025B, MS2034B, and MS2035B
Handheld Compact Vector Network Analyzer



User Guide

VNA Master™ MS20xxB Vector Network Analyzer with Spectrum Analyzer

MS2024B

VNA Frequency: 500 kHz to 4 GHz

MS2025B

VNA Frequency: 500 kHz to 6 GHz

MS2034B

**VNA Frequency: 500 kHz to 4 GHz,
Spectrum Analyzer, 100 kHz to 4 GHz**

MS2035B

**VNA Frequency: 500 kHz to 6 GHz,
Spectrum Analyzer, 100 kHz to 6 GHz**

The Anritsu logo, consisting of the word "Anritsu" in a bold, sans-serif font, with a stylized 'A'.

WARRANTY

The Anritsu products listed on the title page are warranted against defects in materials and workmanship for three years from the date of shipment.

Anritsu's obligation covers repairing or replacing products which prove to be defective during the warranty period. Buyers shall prepay transportation charges for equipment returned to Anritsu for warranty repairs. Obligation is limited to the original purchaser. Anritsu is not liable for consequential damages. Accessories included with this product are not included in the standard warranty.

LIMITATION OF WARRANTY

The foregoing warranty does not apply to Anritsu connectors that have failed due to normal wear. Also, the warranty does not apply to defects resulting from improper or inadequate maintenance, unauthorized modification or misuse, or operation outside of the environmental specifications of the product. No other warranty is expressed or implied, and the remedies provided herein are the Buyer's sole and exclusive remedies.

DISCLAIMER OF WARRANTY

DISCLAIMER OF WARRANTIES. TO THE MAXIMUM EXTENT PERMITTED BY APPLICABLE LAW, ANRITSU COMPANY AND ITS SUPPLIERS DISCLAIM ALL WARRANTIES, EITHER EXPRESSED OR IMPLIED, INCLUDING, BUT NOT LIMITED TO, IMPLIED WARRANTIES OF MERCHANTABILITY AND FITNESS FOR A PARTICULAR PURPOSE, WITH REGARD TO THE PRODUCT. THE USER ASSUMES THE ENTIRE RISK OF USING THE PRODUCT. ANY LIABILITY OF PROVIDER OR MANUFACTURER WILL BE LIMITED EXCLUSIVELY TO PRODUCT REPLACEMENT.

NO LIABILITY FOR CONSEQUENTIAL DAMAGES. TO THE MAXIMUM EXTENT PERMITTED BY APPLICABLE LAW, IN NO EVENT SHALL ANRITSU COMPANY OR ITS SUPPLIERS BE LIABLE FOR ANY SPECIAL, INCIDENTAL, INDIRECT, OR CONSEQUENTIAL DAMAGES WHATSOEVER (INCLUDING, WITHOUT LIMITATION, DAMAGES FOR LOSS OF BUSINESS PROFITS, BUSINESS INTERRUPTION, LOSS OF BUSINESS INFORMATION, OR ANY OTHER PECUNIARY LOSS) ARISING OUT OF THE USE OF OR INABILITY TO USE THE PRODUCT, EVEN IF ANRITSU COMPANY HAS BEEN ADVISED OF THE POSSIBILITY OF SUCH DAMAGES. BECAUSE SOME STATES AND JURISDICTIONS DO NOT ALLOW THE EXCLUSION OR LIMITATION OF LIABILITY FOR CONSEQUENTIAL OR INCIDENTAL DAMAGES, THE ABOVE LIMITATION MAY NOT APPLY TO YOU.

TRADEMARK ACKNOWLEDGMENTS

VxWorks is a registered trademark, and WindML is a trademark of Wind River Systems, Inc. VNA Master is a trademark of Anritsu Company. Google Earth is a trademark of Google Inc. Windows is a registered trademark of Microsoft Corporation.

NOTICE

Anritsu Company has prepared this manual for use by Anritsu Company personnel and customers as a guide for the proper installation, operation and maintenance of Anritsu Company equipment and computer programs. The drawings, specifications, and information contained herein are the property of Anritsu Company, and any unauthorized use or disclosure of these drawings, specifications, and information is prohibited; they shall not be reproduced, copied, or used in whole or in part as the basis for manufacture or sale of the equipment or software programs without the prior written consent of Anritsu Company.

UPDATES

Updates, if any, can be downloaded from the Anritsu Web site at:

<http://www.anritsu.com>

For the latest service and sales contact information in your area, please visit:

<http://www.anritsu.com/contact.asp>

DECLARATION OF CONFORMITY

Manufacturer's Name: ANRITSU COMPANY

Manufacturer's Address: Microwave Measurements Division
490 Jarvis Drive
Morgan Hill, CA 95037-2809
USA

declares that the product specified below:

Product Name: VNA Master

Model Number: MS2024B, MS2025B, MS2034B, MS2035B

conforms to the requirement of:

EMC Directive: 2004/108/EC
Low Voltage Directive: 2006/95/EC

Electromagnetic Compatibility: EN61326:2006

Emissions: EN55011: 2007 Group 1 Class A

Immunity:	EN 61000-4-2:1995 +A1:1998 +A2:2001	4 kV CD, 8 kV AD
	EN 61000-4-3:2006 +A1:2008	3 V/m
	EN 61000-4-4:2004	0.5 kV S-L, 1 kV P-L
	EN 61000-4-5:2006	0.5 kV L-L, 1 kV L-E
	EN 61000-4-6: 2007	3 V
	EN 61000-4-11: 2004	100% @ 20 ms

Electrical Safety Requirement:

Product Safety: EN 61010-1:2001

Morgan Hill, CA



Eric McLean, Corporate Quality Director

1 Oct 2010

Date

产品中有毒有害物质或元素的名称及含量						
For Chinese Customers Only YLYB						
部件名称	有毒有害物质或元素					
	铅 (Pb)	汞 (Hg)	镉 (Cd)	六价铬 [Cr (VI)]	多溴联苯 (PBB)	多溴二苯醚 (PBDE)
印刷线路板 (PCA)	×	○	×	×	○	○
机壳、支架 (Chassis)	×	○	×	×	○	○
LCD	×	×	×	×	○	○
其他（电缆、风扇、 连接器等） (Appended goods)	×	○	×	×	○	○
○：表示该有毒有害物质在该部件所有均质材料中的含量均在 SJ/T11363-2006 标准规定的限量要求以下。						
×：表示该有毒有害物质至少在该部件的某一均质材料中的含量超出 SJ/T11363-2006 标准规定的限量要求。						

环保使用期限



这个标记是根据 2006/2/28 公布的「电子信息产品污染控制管理办法」以及 SJ/T 11364-2006 「电子信息产品污染控制标识要求」的规定，适用于在中国销售的电子信息产品的环保使用期限。仅限于在遵守该产品的安全规范及使用注意事项的基础上，从生产日起算的该年限内，不会因产品所含有害物质的泄漏或突发性变异，而对环境污染，人身及财产产生深刻地影响。

注）电池的环保使用期限是 5 年。生产日期标于产品序号的前四码（如 S/N 0728XXXX 为 07 年第 28 周生产）。

Equipment marked with the Crossed-out Wheelie Bin symbol complies with the European Parliament and Council Directive 2002/96/EC (the "WEEE Directive") in the European Union.



For Products placed on the EU market after August 13, 2005, please contact your local Anritsu representative at the end of the product's useful life to arrange disposal in accordance with your initial contract and the local law.

CE Conformity Marking

Anritsu affixes the CE Conformity marking onto its conforming products in accordance with Council Directives of The Council Of The European Communities in order to indicate that these products conform to the EMC and LVD directive of the European Union (EU).



C-tick Conformity Marking

Anritsu affixes the C-tick marking onto its conforming products in accordance with the electromagnetic compliance regulations of Australia and New Zealand in order to indicate that these products conform to the EMC regulations of Australia and New Zealand.



Notes On Export Management

This product and its manuals may require an Export License or approval by the government of the product country of origin for re-export from your country.

Before you export this product or any of its manuals, please contact Anritsu Company to confirm whether or not these items are export-controlled.

When disposing of export-controlled items, the products and manuals need to be broken or shredded to such a degree that they cannot be unlawfully used for military purposes.

Mercury Notification

This product uses an LCD backlight lamp that contains mercury. Disposal may be regulated due to environmental considerations. Please contact your local authorities for disposal or recycling information.

Safety Symbols

To prevent the risk of personal injury or loss related to equipment malfunction, Anritsu Company uses the following symbols to indicate safety-related information. For your own safety, please read the information carefully *before* operating the equipment.

Symbols Used in Manuals

Danger



This indicates a risk from a very dangerous condition or procedure that could result in serious injury or death and possible loss related to equipment malfunction. Follow all precautions and procedures to minimize this risk.

Warning



This indicates a risk from a hazardous condition or procedure that could result in light-to-severe injury or loss related to equipment malfunction. Follow all precautions and procedures to minimize this risk.

Caution



This indicates a risk from a hazardous procedure that could result in loss related to equipment malfunction. Follow all precautions and procedures to minimize this risk.

Safety Symbols Used on Equipment and in Manuals

The following safety symbols are used inside or on the equipment near operation locations to provide information about safety items and operation precautions. Ensure that you clearly understand the meanings of the symbols and take the necessary precautions *before* operating the equipment. Some or all of the following five symbols may or may not be used on all Anritsu equipment. In addition, there may be other labels attached to products that are not shown in the diagrams in this manual.



This indicates a prohibited operation. The prohibited operation is indicated symbolically in or near the barred circle.



This indicates a compulsory safety precaution. The required operation is indicated symbolically in or near the circle.



This indicates a warning or caution. The contents are indicated symbolically in or near the triangle.



This indicates a note. The contents are described in the box.



These indicate that the marked part should be recycled.

For Safety

Warning



Always refer to the operation manual when working near locations at which the alert mark, shown on the left, is attached. If the operation, etc., is performed without heeding the advice in the operation manual, there is a risk of personal injury. In addition, the equipment performance may be reduced. Moreover, this alert mark is sometimes used with other marks and descriptions indicating other dangers.

Warning



When supplying power to this equipment, connect the accessory 3-pin power cord to a 3-pin grounded power outlet. If a grounded 3-pin outlet is not available, use a conversion adapter and ground the green wire, or connect the frame ground on the rear panel of the equipment to ground. If power is supplied without grounding the equipment, there is a risk of receiving a severe or fatal electric shock.

Warning



This equipment can not be repaired by the operator. Do not attempt to remove the equipment covers or to disassemble internal components. Only qualified service technicians with a knowledge of electrical fire and shock hazards should service this equipment. There are high-voltage parts in this equipment presenting a risk of severe injury or fatal electric shock to untrained personnel. In addition, there is a risk of damage to precision components.

Caution



Electrostatic Discharge (ESD) can damage the highly sensitive circuits in the instrument. ESD is most likely to occur as test devices are being connected to, or disconnected from, the instrument's front and rear panel ports and connectors. You can protect the instrument and test devices by wearing a static-discharge wristband. Alternatively, you can ground yourself to discharge any static charge by touching the outer chassis of the grounded instrument before touching the instrument's front and rear panel ports and connectors. Avoid touching the test port center conductors unless you are properly grounded and have eliminated the possibility of static discharge.

Repair of damage that is found to be caused by electrostatic discharge is not covered under warranty.

Warning



This instrument is supplied with a rechargeable battery that could potentially leak hazardous compounds into the environment. These hazardous compounds present a risk of injury or loss due to exposure. Anritsu Company recommends removing the battery for long-term storage of the instrument and storing the battery in a leak-proof, plastic container. Follow the environmental storage requirements specified in the instrument data sheet.

Table of Contents

Chapter 1—General Information

1-1	Introduction	1-1
1-2	Contacting Anritsu	1-1
1-3	Anritsu Service Centers	1-1
1-4	Additional Documents	1-2
1-5	VNA Master Specifications	1-2
1-6	Available Models and Accessories	1-2
1-7	Identifying the Connections	1-3
1-8	General Description	1-4
1-9	Soft Carrying Case	1-5
1-10	Tilt Bail Stand	1-6
1-11	Preventive Maintenance	1-7
1-12	Calibration Requirements — Vector Network Analyzer	1-7
1-13	Annual Verification	1-8
1-14	ESD Cautions	1-8
1-15	Battery Replacement	1-9
1-16	Secure Environment Workplace	1-11
	VNA Master Memory Types	1-11
	Erase All User Files in Internal Memory	1-11
	Recommended Usage in a Secure Environment	1-12

Chapter 2—Instrument Overview

2-1	Introduction	2-1
2-2	Turning On the VNA Master	2-1
2-3	Front Panel Overview	2-3
	Front Panel Keys	2-4
	Touch Screen Keys	2-7
	Keypad Menu Keys (1 to 9)	2-7
	Touch Points	2-7
	Touch Screen Calibration	2-7
	LED Indicators	2-8
2-4	Display Overview	2-9
	Display Settings	2-10

Table of Contents (continued)

2-5	Test Panel Connector Overview	2-12
	MS2024B and MS2025B	2-12
	MS2034B and MS2035B	2-13
	External Power	2-13
	USB Interface – Type A	2-14
	USB Interface – Mini-B	2-14
	Ethernet Interface (Option 411)	2-14
	Headset Jack	2-14
2-6	Connector Care	2-15
	Connecting Procedure	2-15
	Disconnecting Procedure	2-15
2-7	VNA Master Connectors	2-16
	External Trigger In (50 ohm)	2-16
	External Reference In (50 ohm)	2-16
	RF In (50 ohm)	2-16
	GPS Antenna Connector (Option 31)	2-16
	VNA Port-1 (50 ohm)	2-16
	VNA Port-2 (50 ohm)	2-17
2-8	Symbols and Indicators	2-17
	Battery Symbols	2-17
	Additional Symbols	2-18
2-9	Data Entry	2-19
	Numeric Values	2-19
	Parameter Setting	2-19
	Text Entry	2-20
2-10	Mode Selector Menu	2-21

Chapter 3—Quick Start Guide

3-1	Introduction	3-1
3-2	Measurement Mode Selection	3-1
3-3	Vector Network Analyzer	3-2
	Selecting the Measurement Type	3-2
	Setting the Frequency	3-2
	Setting the Scale	3-3
	Turning On Markers	3-3
	Peak and Valley Search Markers	3-3
	Find Marker Value	3-4
	Setting Up Delta Markers	3-4
	Setting a Single Limit Line	3-5
	Setting Up Distance Domain (Option 501)	3-6

Table of Contents (continued)

3-4	Calibration Considerations	3-6
	Cal Type	3-9
3-5	Spectrum Analyzer	3-9
	Set Start and Stop Frequencies	3-9
	Enter the Center Frequency	3-9
	Select a Signal Standard	3-9
	Set the Measurement Bandwidth	3-9
	Set the Amplitude	3-10
	Power Offset Set Up for Compensating External Loss	3-10
	Set the Span	3-10
	Single Limit Line	3-11
	Create a Limit Envelope	3-11
	Setting Up Markers	3-12
	Select a Smart Measurement Type	3-13
3-6	Saving Measurements	3-14

Chapter 4—File Management

4-1	Introduction	4-1
4-2	File Types	4-1
4-3	Managing Files	4-2
	Save Files	4-2
	Save Dialog Box	4-3
	Quick Name Keys	4-3
	Recall Files	4-4
	Recall Dialog Box	4-4
	Copy Files	4-5
	Delete Files	4-6
	Delete Dialog Box	4-6
4-4	File Menu Overview	4-7
4-5	File Menu	4-8
	Save Menu	4-9
	Save Location Menu	4-10
	Save On Event Menu	4-11
	Recall Menu	4-12
	Copy Menu	4-13
	Delete Menu	4-14

Chapter 5—System Operations

5-1	Introduction	5-1
5-2	System Menu Group Overview	5-2

Table of Contents (continued)

5-3	System Menu	5-3
	System Options Menu	5-4
	System Options 2/2 Menu	5-5
5-4	Application Options Menu (VNA Mode)	5-6
5-5	Application Options Menu (SPA Mode)	5-7
5-6	Mode (Meas Gain Range) Menu (VNA Mode)	5-8
5-7	Display Settings Menu	5-9
5-8	Reset Menu	5-10
5-9	Preset Menu	5-11
5-10	Power On Self Test	5-12
5-11	Updating the VNA Master Firmware	5-12

Chapter 6—GPS (Option 31)

6-1	Introduction	6-1
6-2	Activating the GPS Feature	6-1
6-3	Saving and Recalling Traces with GPS Information	6-3
	Saving Traces with GPS Information	6-3
	Recalling GPS Information	6-3
6-4	GPS Menu	6-3
	GPS Info	6-4

Chapter 7—Bias Tee (Option 10)

7-1	Overview	7-1
-----	----------------	-----

Chapter 8—Anritsu PC Software Tools

8-1	Introduction	8-1
8-2	Anritsu Tool Box	8-1
8-3	Line Sweep Tools	8-2
8-4	Master Software Tools	8-3
8-5	easyMap Tools	8-4

Appendix A—Supplemental Documentation

A-1	Introduction	A-1
-----	--------------------	-----

Appendix B—Signal Standards

B-1	Introduction	B-1
-----	--------------------	-----

Appendix C—Error Messages

C-1	Introduction	C-1
-----	--------------------	-----

Table of Contents (continued)

C-2	Reset Options	C-1
	Reset Via Instrument Menus	C-1
	Reset from OFF Condition.	C-1
C-3	Self Test or Application Self Test Error Messages	C-1
	Self Test	C-1
	Application Self Test Results Window — VNA	C-3
	Application Self Test (Vector Network Analyzer mode only)	C-3
	Application Self Test Results Window — SPA	C-4
C-4	Operation Error Messages	C-5
	Fan Failure	C-5
	High Temp Warning.	C-5
	Operation not Permitted in Recall Mode	C-5
	PMON PLD Fail.	C-6
	Power Supply	C-6
	Error Saving File. General Error Saving File	C-6
C-5	Vector Network Analyzer Specific Warning Messages.	C-6
	Bias Tee cannot be enabled for start freq < 2MHz.	C-6
	Bias Tee is not allowed for start freq < 2MHz.	C-6
	Changing Source Power	C-6
	No valid calibration to change correction.	C-6
	Cannot continue with calculating.	C-6
	Bias Tee state cannot be changed during calibration.	C-7
	Turning Bias Tee to OFF.	C-7
	Turning Bias Tee to OFF.	C-7
	Calibration will be lost after change.	C-7
	Changes not allowed during calibration.	C-7
	Option 10 (Bias Tee) not enabled.	C-7
	No External Reference signal detected.	C-7
	Limit is not available for this Graph type.	C-7

Appendix D—Tower Mounted Amplifiers

D-1	Introduction	D-1
-----	------------------------	-----

Appendix E—Coaxial Cable Technical Data

E-1	Coaxial Cable Technical Data	E-1
-----	--	-----

Appendix F—LAN and DHCP

F-1	Introduction.	F-1
F-2	Ethernet Configuration	F-1
	LAN Connection	F-1
	Ethernet Config	F-3
	Ethernet Menu	F-4

Table of Contents (continued)

F-3	Using DHCP	F-5
F-4	Static IP Address	F-5
	IP Address	F-5
	Default Gateway	F-5
	Subnet Mask	F-5
	Example 1	F-5
	Example 2	F-6
F-5	Operating System Tools	F-6
	Ipconfig Tool	F-6
	Ping Tool	F-6

Index

Chapter 1 — General Information

1-1 Introduction

This chapter provides information about frequency range, available options, additional documents, general overview, preventive maintenance, and annual verification requirements for the Anritsu Handheld MS2024B, MS2025B, MS2034B, and MS2035B VNA Master models.

Throughout this manual, the terms VNA Master and MS20xxB refer to the MS2024B, MS2025B, MS2034B, and MS2035B. The term MS202xB refers to the MS2024B and the MS2025B, and the term MS203xB refers to the MS2034B and the MS2035B.

1-2 Contacting Anritsu

To contact Anritsu, please visit:

<http://www.anritsu.com/contact.asp>

From here, you can select the latest sales, select service and support contact information in your country or region, provide online feedback, complete a "Talk to Anritsu" form to have your questions answered, or obtain other services offered by Anritsu.

Updated product information can be found on the Anritsu web site:

<http://www.anritsu.com/>

Search for the product model number. The latest documentation is on the product page under the Library tab:

<http://www.anritsu.com/en-us/products-solutions/products/MS2024B.aspx>

<http://www.anritsu.com/en-us/products-solutions/products/MS2025B.aspx>

<http://www.anritsu.com/en-us/products-solutions/products/MS2034B.aspx>

<http://www.anritsu.com/en-us/products-solutions/products/MS2035B.aspx>

1-3 Anritsu Service Centers

For the latest service and sales information in your area, please visit the following URL:

<http://www.anritsu.com/Contact.asp>

and choose a country for regional contact information.

1-4 Additional Documents

This user guide is specific to the VNA Master MS20xxB (models MS2024B, MS2025B, MS2034B, and MS2035B) and includes a general description of the instruments. Additional instrument functions and descriptions of optional measurement capabilities are described in measurement guides.

Refer to [Appendix A, “Supplemental Documentation”](#) for a list of measurement guides and their Anritsu part numbers. Measurement guides are provided on the document disc that is shipped with each instrument. Updated measurement guides are available for download (at no charge) from the VNA Master product Web pages listed previously.

1-5 VNA Master Specifications

General and performance specifications, instrument options, standard accessories, and optional accessories are described in the VNA Master Technical Data Sheet, (Anritsu part number 11410-00549). The technical data sheet is available on the Anritsu Web site: <http://www.anritsu.com>

1-6 Available Models and Accessories

[Table 1-1](#) lists the VNA Master models and frequency ranges that are described in this User Guide. Refer to the VNA Master Technical Data Sheet for a list and descriptions of available accessories.

Table 1-1. VNA Master Models and Frequency Ranges

Model	Frequency Range
MS2024B	Vector Network Analyzer, 500 kHz to 4 GHz
MS2025B	Vector Network Analyzer, 500 kHz to 6 GHz
MS2034B	Vector Network Analyzer, 500 kHz to 4 GHz and Spectrum Analyzer, 100 kHz to 4 GHz
MS2035B	Vector Network Analyzer, 500 kHz to 6 GHz and Spectrum Analyzer, 100 kHz to 6 GHz

1-7 Identifying the Connections

The MS2024B and MS2025B have the connectors shown in [Figure 1-1](#). For details, refer to [Figure 2-8](#).



Figure 1-1. MS2024B and MS2025B Connectors

The MS2034B and MS2035B have the connectors shown in [Figure 1-2](#). For details, refer to [Figure 2-9](#).



Figure 1-2. MS2034B and MS2035B Connectors

Model physical characteristics are in the Technical Data Sheet (refer to [Table A-2](#), “VNA Master Related Documents” on page A-1).

1-8 General Description

The MS20xxB VNA Master is an integrated multi-functional test instrument with a 1-path, 2-port Vector Network Analyzer that eliminates the need to carry and learn multiple test sets. In addition, the MS203xB can be configured to include a Spectrum Analyzer, Interference Analyzer with Interference Mapping capabilities, Coverage Mapping, Channel Scanner, AM/FM/PM Analyzer, and High Accuracy Power Meter. A GPS receiver can be added to both the MS202xB and the MS203xB VNA Master models.

The bright 8.4 inch TFT color display provides easy viewing in a variety of lighting conditions, and the combination of a touch screen and keypad enables you to navigate menus with the touch screen and to enter numbers with the keypad. All VNA Master models are equipped with a Li-Ion battery delivering more than four hours of battery life for the MS202xB VNA Masters and more than three hours of battery life for the MS203xB VNA Masters.

Time and date stamping of measurement data is automatic. The internal memory provides for the storage and recall of up to 1000 measurement setups and up to 1000 traces. External storage can be used for bulk measurement storage. Measurements and setups can be stored in a USB flash drive or transferred to a PC by using the included USB cable. Use Line Sweep Tools (LST) for certain VNA measurements and Master Software Tools for spectrum analysis measurements. Cable parameters can be added to list boxes by creating them in Line Sweep Tools. Signal Standard parameters can be added to list boxes by creating them in Master Software Tools. Refer to [Chapter 8, “Anritsu PC Software Tools”](#) for a brief overview of these software tools.

Note	Not all after-market USB drives are compatible with the VNA Master. Many drives come with a second partition that contains proprietary firmware. This partition must be removed. Only one partition is allowed. Refer to the individual manufacturer for instructions on how to remove it. You might also try reformatting a drive that contains a single partition using FAT32 format.
-------------	---

1-9 Soft Carrying Case

The VNA Master can be operated while in the soft carrying case (refer to the Technical Data Sheet for ordering information). On the back of the case is a large storage pouch for accessories and supplies.

To install the instrument into the soft carrying case:

1. The front panel of the case is secured with hook-and-loop fasteners. Fully close the front panel of the case. When closed, the front panel supports the shape of the case while you are inserting the VNA Master.
2. Place the soft carrying case face down on a stable surface, with the front panel fully closed and laying flat.

Note

The soft case has two zippers near the back. The zipper closer to the front of the case opens to install and remove the instrument. The zipper closer to the back of the case opens an adjustable support panel that can be used to provide support for improved stability and air flow while the instrument is in the case. This support panel also contains the storage pouch.

3. Open the zippered back of the case.
4. Insert the instrument face down into the case, take care that the connectors are properly situated in the case top opening. You may find it easier to insert the connectors first, then pull the corners over the bottom of the VNA Master.



Figure 1-3. Instrument (MS2035B) Inserted into the Soft Carrying Case

5. Close the back panel and secure with the zipper to secure the VNA Master.

The soft carrying case includes a detachable shoulder strap, which can be connected to the D-rings of the case.

Caution

The soft case has panel openings for the fan inlet and exhaust ports. Do not block the air flow through the panels when the unit is operating.

1-10 Tilt Bail Stand

A Tilt Bail is attached to the back of the VNA Master for desktop operation. The tilt bail provides two settings of backward tilt for improved stability. To deploy the tilt bail, pull the bottom of the tilt bail away from the back of the instrument. To store the tilt bail, push the bottom of the bail towards the back of the instrument until it attaches to the VNA Master.

Note

Do not use the tilt bail while the instrument is in the soft case. The soft case has an adjustable support panel in the back zipper.



Figure 1-4. Tilt Bail Extended

1-11 Preventive Maintenance

VNA Master preventive maintenance consists of cleaning the unit and inspecting and cleaning the RF connectors on the instrument and on all accessories. Clean the VNA Master with a soft, lint-free cloth dampened with water or with water and a mild cleaning solution.

Caution To avoid damaging the display or case, do not use solvents or abrasive cleaners.

Clean the RF connectors and center pins with a cotton swab dampened with denatured alcohol. Visually inspect the connectors. The fingers of the N(f) connectors and the pins of the N(m) connectors must be unbroken and uniform in appearance. If you are unsure whether the connectors are undamaged, gauge the connectors to confirm that the dimensions are correct.

Visually inspect test port cables. The test port cable should be uniform in appearance and not stretched, kinked, dented, or broken.

1-12 Calibration Requirements — Vector Network Analyzer

The VNA Master is a field portable unit operating in the rigors of the test environment. In order to ensure measurement accuracy, RF calibration (OSLT, for example) must be performed prior to making a measurement in the field.

Anritsu recommends allowing the instrument to warm up to typical operation temperature (a minimum of 15 minutes) before calibrating. The instrument will require a new OSL calibration if the internal instrument temperature changes more than 15 °C after calibration.

The VNA Master has no field-adjustable components. The RF calibration components, however, are crucial to the integrity of the calibration and must be periodically verified to ensure their performance. This is especially important if the components have been dropped or over-torqued.

Note

For best calibration results (compensation for all measurement uncertainties), ensure that the calibration is performed at the end of the test port or optional extension cable (that is, at the same point that the device that is to be tested (DUT) will be connected).

Caution

For best results, use an Anritsu phase stable Test Port Extension Cable, such as those listed in the Technical Data Sheet for your instrument (refer to [Appendix A](#)). Use of a typical laboratory cable to extend the VNA Master test port to the device under test, or any bending of the cable subsequent to the OSL or OSLT calibration, may cause uncompensated phase reflections inside the cable. Reflections of this type cause measurement errors, which are more pronounced at higher frequencies.

1-13 Annual Verification

Anritsu recommends an annual calibration and performance verification of the VNA Master and the OSL calibration components and InstaCal module by local Anritsu service centers.

The VNA Master is self-calibrating and has no field-adjustable components. The OSL calibration components are crucial to the integrity of the calibration. As a result, they must be verified periodically to ensure performance conformity. This is especially important if the OSL calibration components have been accidentally dropped or over-torqued. Contact information for Anritsu Service Centers is available at:

<http://www.anritsu.com/Contact.asp>

1-14 ESD Cautions

The VNA Master, like other high performance instruments, is susceptible to ESD damage. Coaxial cables and antennas can easily build up a static charge, which (if allowed to discharge by connecting directly to the VNA Master without first discharging the static charge) may damage the instrument input circuitry. Operators must be aware of the potential for ESD damage and must take all necessary precautions.

Operators should exercise practices outlined within industry standards such as JEDEC-625 (EIA-625), MIL-HDBK-263, and MIL-STD-1686, which pertain to ESD and ESDS devices, equipment, and practices. Because these standards apply to the VNA Master, Anritsu Company recommends that any static charges that may be present be dissipated before connecting coaxial cables or antennas to the VNA Master. This may be as simple as temporarily attaching a short or load device to the cable or antenna prior to attaching to the VNA Master. Remember that the operator may also carry a static charge that can cause damage. Following the practices outlined in these standards helps to ensure that a safe environment exists for both personnel and equipment.

1-15 Battery Replacement

The battery can be replaced without the use of tools. The battery compartment is located on the lower left side of the instrument (when you are facing the measurement display). Refer to [Figure 1-5](#). To remove the battery:

1. Slide the catch toward the bottom of the instrument.
2. Tilt the top of the door away from the unit.
3. Lift out the battery door.
4. Remove the battery pack from the instrument by grabbing the battery lanyard and pulling out.

Replacement is the opposite of removal. The battery key side (slot below the contacts) must be facing the front on the unit and slides in first. Press the battery inward firmly to seat the contacts, then reinstall the door.

Note

When inserting the battery, the battery label must face the back of the instrument, and the guide slot on the battery must be below the contacts. If the battery door does not latch closed, the battery may be inserted incorrectly.



Figure 1-5. Battery Compartment

The battery that is supplied with the VNA Master may need charging before use. The battery can be charged while it is installed in the VNA Master by using either the AC-DC Adapter or the DC adapter, or outside the VNA Master with the optional Dual Battery Charger. Refer to [“Battery Symbols” on page 2-17](#) for a description of battery symbols.

Note

Use only Anritsu Company approved batteries, adapters, and chargers with this instrument.
Anritsu Company recommends removing the battery for long-term storage of the instrument.

Caution

When using the Automotive Cigarette Lighter Adapter, always verify that the supply is rated for a minimum of 60 Watts at 12 VDC, and that the socket is clear of any dirt or debris. If the adapter plug becomes hot to the touch during operation, then discontinue use immediately.

1-16 Secure Environment Workplace

This section describes the types of memory in the VNA Master, how to delete stored user files in internal memory, and recommended usage in a secure environment workplace.

VNA Master Memory Types

The instrument contains non-volatile disk-on-a-chip memory, EEPROM, and volatile DRAM memory. The instrument does not have a hard disk drive or any other type of volatile or non-volatile memory.

Disk-On-A-Chip (DOC)

DOC is used for storage of instrument firmware, factory calibration information, user measurements, setups, and *.jpg screen images. User information stored on the DOC is erased by the master reset process described in section [“Erase All User Files in Internal Memory”](#) on this page.

EEPROM

This memory stores the model number, serial number, and calibration data for the instrument. Also stored here are the user-set operating parameters such as frequency range. During the master reset process, all operating parameters that are stored in the EEPROM are set to standard factory default values.

RAM Memory

This is volatile memory used to store parameters needed for the normal operation of the instrument along with current measurements. This memory is reset whenever the instrument is restarted.

External USB Flash Drive (not included with the instrument)

This memory may be selected as the destination for saved measurements and setups for the instrument. You can also copy the contents of the internal disk-on-chip memory to the external flash memory for storage or data transfer. The external Flash USB can be reformatted or sanitized using software on a PC.

Refer to the [Chapter 4, “File Management”](#) for additional information on saving and copying files to the USB flash drive.

Erase All User Files in Internal Memory

Perform a Master Reset:

1. Turn the instrument on.
2. Press the **Shift** button then the **System** (8) button.
3. Press the **System Options** soft key (submenu key).
4. Press the **Reset** key, then the **Master Reset** key.
5. A dialog box is displayed on the screen warning that all settings will be returned to factory default values and all user files will be deleted. This deletion is a standard file delete and does not involve overwriting exiting information.
6. Press the **ENTER** button to complete the master reset.
7. The instrument reboots, and the reset is complete.

Recommended Usage in a Secure Environment

Set the VNA Master to save files to an external USB Flash drive:

1. Attach the external Flash drive and turn on the instrument.
2. Press the **Shift** button then the **File (7)** button.
3. Press the **Save** soft key (submenu key).
4. Press the **Change Save Location** soft key, then select the USB drive with the rotary knob, **Up/Down** arrow keys, or the touchscreen.
5. Press the **Set Location** soft key.

The external USB drive is now the default location for saving files.

Note

Not all after-market USB drives are compatible with the VNA Master. Many drives come with a second partition that contains proprietary firmware. This partition must be removed. Only one partition is allowed. Refer to the individual manufacturer for instructions on how to remove it. You might also try reformatting a drive that contains a single partition using FAT32 format.

Chapter 2 — Instrument Overview

2-1 Introduction

This chapter provides a brief overview of the Anritsu VNA Master. The intent of this chapter is to acquaint you with the instrument. For detailed measurement information, refer to a specific measurement guide, as listed in [Appendix A, “Supplemental Documentation”](#).

2-2 Turning On the VNA Master

The Anritsu VNA Master MS202xB models are capable of approximately four hours, and the MS203xB models are capable of approximately three hours, of continuous operation from a fully charged, field-replaceable battery (refer to [Section 1-15 “Battery Replacement” on page 1-9](#)).

The VNA Master can also be operated from an external power source (which also simultaneously charges the battery). This can be achieved with either the Anritsu AC-DC Adapter or the Automotive Cigarette Lighter Adapter. Both items are included with the VNA Master.

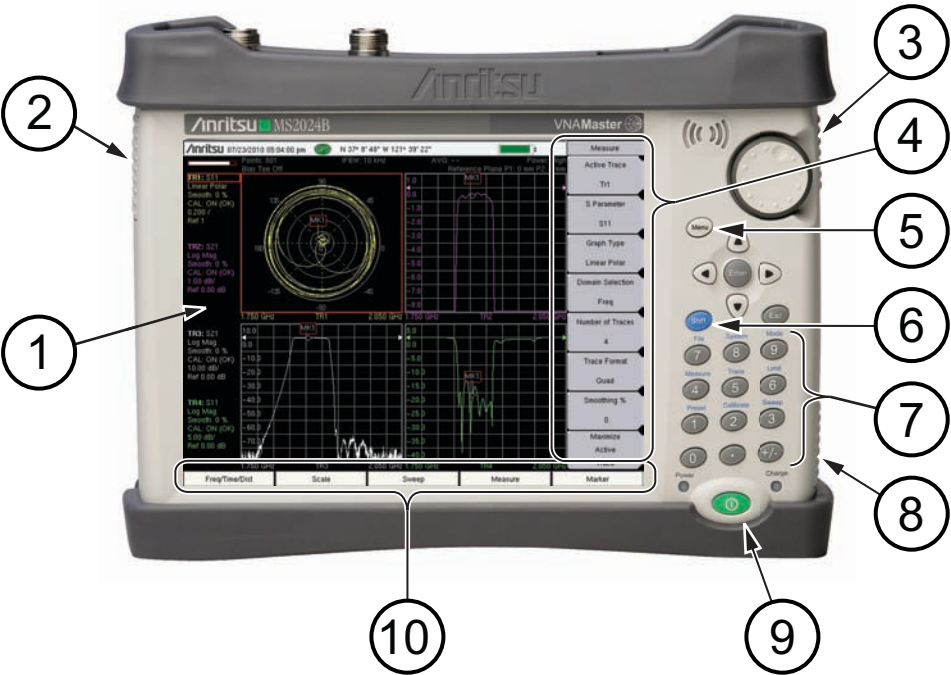
Caution

When using the Automotive Cigarette Lighter Adapter, always verify that the supply is rated for a minimum of 60 Watts at 12 VDC, and that the socket is clear of any dirt or debris. If the adapter plug becomes hot to the touch during operation, discontinue use immediately.

2-2 Turning On the VNA Master

Instrument Overview

To turn on the VNA Master, press the green **On/Off** button on the front panel (Figure 2-1). The VNA Master takes approximately sixty seconds to complete power warm-up and to load the application software. At the completion of this process, the instrument is ready for use.



1	Instrument Settings Summary (unique to each trace)
2	Fan Exhaust Port
3	Fan Inlet Port
4	Touch Screen Soft keys
5	Menu Key
6	Shift Key
7	Numeric Keypad and Shift Menu Keys (printed in blue above 1 through 9)
8	Fan Inlet Port
9	On/Off Button
10	Touch Screen Function Hard Keys

Figure 2-1. VNA Master Overview

2-3 Front Panel Overview

The VNA Master menu-driven interface is easy to use and requires little training. The VNA Master uses a touch screen and keypad for data input. The five bottom menu keys and eight soft keys (submenu keys) on the right side are touch screen keys. The menu and soft keys vary depending upon the selected mode of operation. Refer to [“Mode Selector Menu” on page 2-21](#).

Numeric keys 1 through 9 are dual purpose, depending upon the current mode of operation. The dual-purpose keys are labeled with a number on the key itself, and the alternate function is printed in blue above each of the keys. Use the blue **Shift** key to access the functions that are printed on the panel. The **Escape** key, used for aborting data entry, is the oval button located above numeric key 9. The rotary knob, the four arrow keys, and the keypad can be used to change the value of an active parameter.

The Menu key provides graphical icons of all of the installed measurement modes and user defined shortcuts (refer to [“Menu Key” on page 2-4](#)). The locations of the keys are shown in [Figure 2-1](#).

Caution

Keep the fan inlet and exhaust ports clear of obstructions at all times for proper ventilation and cooling of the instrument.

Front Panel Keys

Menu Key

The **Menu** key (or button) is above the arrow keys, which surround the **Enter** key. Press the **Menu** key to display a grid of shortcut icons for installed measurement modes and any user-selected menus and setup files that may have been added.

[Figure 2-2](#) shows the **Menu** key screen with shortcut icons for the installed measurement modes. Touch one of the icons in the top row to change modes. These top-row icons are preinstalled and cannot be moved or deleted.

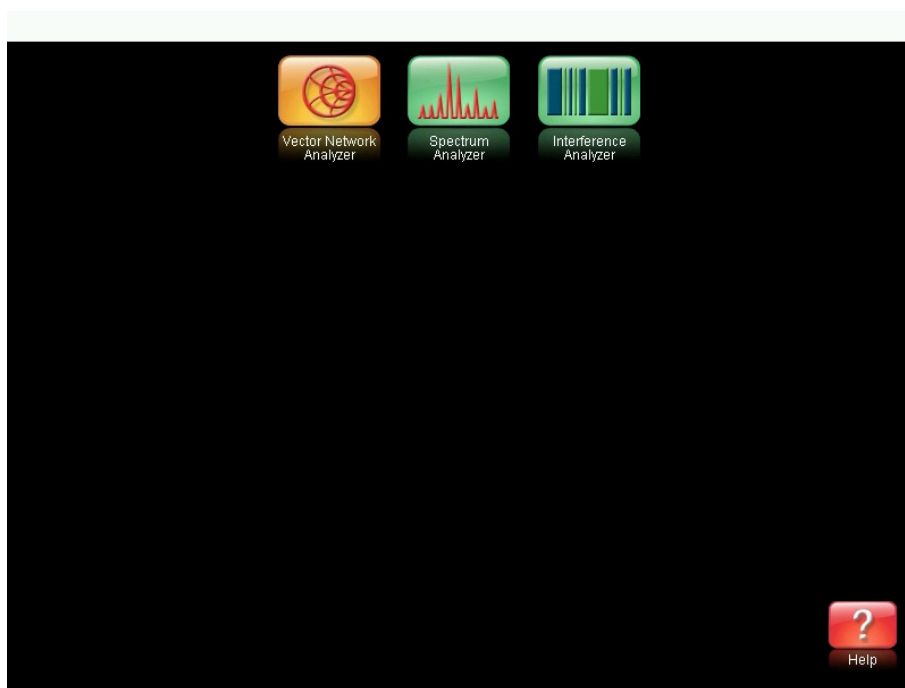


Figure 2-2. Menu Key Screen, Icons for Installed Measurements

Note

The display of the Menu screen varies depending on your VNA Master model and installed options.

Figure 2-3 shows the **Menu** key screen with shortcut icons for the installed measurement modes plus four rows of user-defined shortcuts to menus and setup files.

Press and hold down any touch-screen key for a few seconds to add a shortcut of that key to this screen. To add shortcut setup files (*.stp), open the recall menu and hold down on the file name for several seconds. Then select the location for the shortcut.

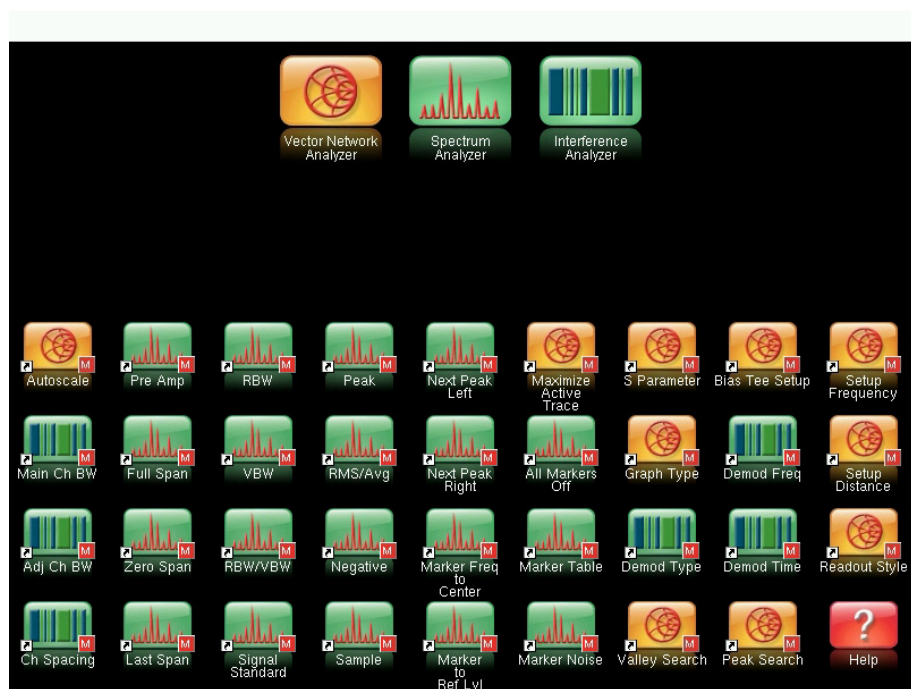


Figure 2-3. Menu Key Screen

User-defined shortcuts stay in memory until deleted. To delete or move a shortcut button, press the **Menu** key, then press and hold the shortcut for approximately 3 seconds. The **Customize Button** dialog box opens to allow a button to be deleted or moved. Press **Esc** to exit the Menu shortcut display.

Note The Factory Default reset deletes all user-created shortcut icons from the Menu screen. Refer to the [“Reset Menu” on page 5-10](#) for additional information.

Help for the Menu shortcut screen is available by pressing the Help icon in the lower-right corner of the display, as shown in [Figure 2-4 on page 2-6](#).



Figure 2-4. Menu Help

Esc Key

Press this key to cancel any setting that is currently being made.

Enter Key

Press this key to finalize data input or to select a highlighted item from a list.

Arrow Keys

The four arrow keys (around the **Enter** key) are used to scroll up, down, left. The arrow keys can often be used to change a value or to change a selection from a list. The **Left/Right** arrow keys sometimes change values or move through selections in different increments than the **Up/Down** arrow keys. The arrow keys are also used to move markers.

Shift Key

Pressing the **Shift** key followed by pressing a number key executes the function that is indicated in blue text above the number key. When the **Shift** key is active, its icon is displayed at the top-right of the measurement display area near the battery charge indicator.



Figure 2-5. Shift Key Icon

Number Keypad

The Number keypad has two functions: The primary function is number entry. The secondary function is to list various menus. Refer to [“Keypad Menu Keys \(1 to 9\)” on page 2-7](#).

Rotary Knob

Turning the rotary knob changes numerical values, scrolls through selectable items from a list, and moves markers. Values or items may be within a dialog box or an edit window.

Touch Screen Keys

Main Menu Touch Screen Keys

These five main menu keys (also called hard keys or function hard keys) are horizontally arranged along the lower edge of the touch screen. The main menu key (hard key) functions change to match specific instrument Mode settings. The hard keys generate function-specific submenus. The various measurement modes are selected by pressing the **Shift** key and then the **Mode (9)** key. Descriptions of the various measurement modes can be found in the applicable Measurement Guides listed in [Appendix A](#).

Note

Available measurement modes are based on the model and the options that are purchased. Refer to [Table 1-1 on page 1-2](#) for additional information.

Touch Screen Submenu (Soft) Keys

These submenu keys (also called soft keys) are arranged along the right-hand edge of the touch screen. The soft key labels change as instrument measurement settings change. The current submenu title is shown at the top of the submenu key block.

Keypad Menu Keys (1 to 9)

Pressing the **Shift** key followed by pressing a number key selects the menu function that is printed in blue characters above the number key. Refer to [Figure 2-1 on page 2-2](#).

Not all Secondary Function Menus are active in various measurement modes. If any one of these menus is available in a specific instrument mode of operation, then it can be called from the number keypad. It may also be available from a hard key or a soft key.

The Preset Menu (1) and System Menu (8) are described in [Chapter 5, “System Operations”](#). The Sweep Menu (3), Measure Menu (4), Trace Menu (5), and Limit Menu (6) vary depending on measurement mode, refer to the Measurement Guides listed in [Appendix A](#) for information. The File Menu (7) is described in [Chapter 4, “File Management”](#). The Mode Menu (9) is described in [“Mode Selector Menu” on page 2-21](#).

Touch Points

Touch Points on the display screen provide additional functionality and convenience. These points are described in the measurement guides for specific measurement modes. The measurement guides are listed in [Appendix A](#).

Touch Screen Calibration

Press **Shift** then **0** (zero) to open the Calibrate Touch Screen display. Press **Enter** to start the calibration or **Esc** to cancel.

LED Indicators

Power LED

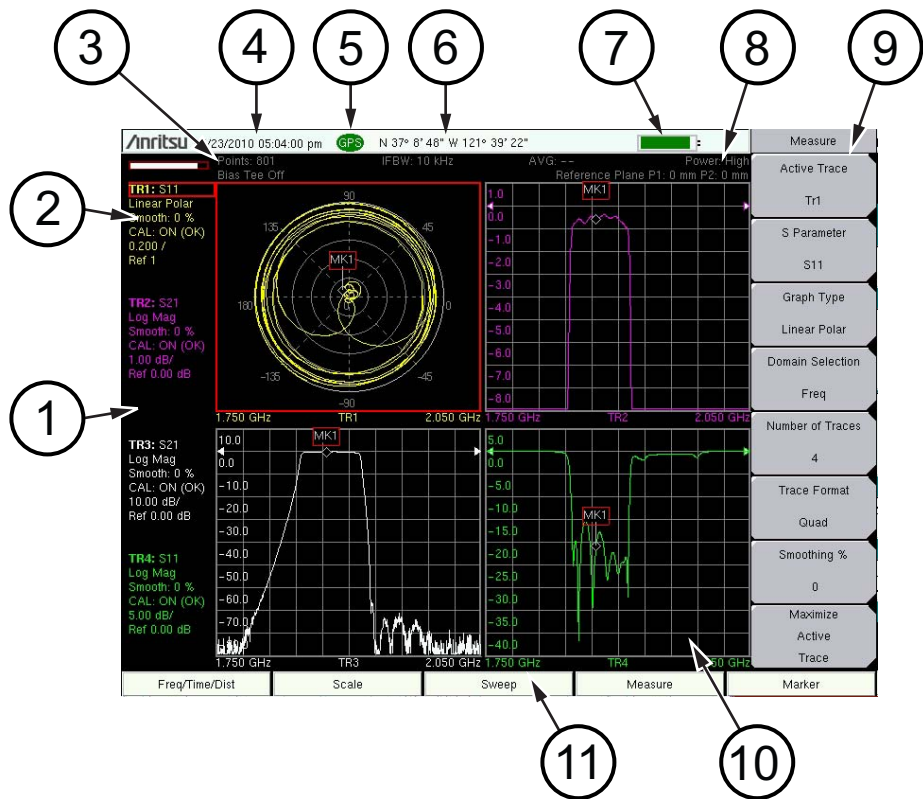
The Power LED is located to the left of the **On/Off** key. The LED is solid green when the unit is on and slowly blinks when the unit is off but has external power.

Charge LED

The Charge LED is located to the right of the **On/Off** key. The LED slowly blinks when the battery is charging and is solid green when the battery is fully charged. It slowly blinks when the unit is off but has external power.

2-4 Display Overview

Figure 2-6 illustrates some of the key information areas of the VNA Master sweep window in Vector Network Analyzer mode. For detailed information, refer to the Measurement Guides that are listed in [Appendix A, “Supplemental Documentation”](#).



1	Instrument Settings Summary (unique to each trace)
2	Trace 1 (TR1) data (within Instrument Settings Summary)
3	Instrument Settings Summary (applies to all traces)
4	Real Time Clock
5	GPS Icon
6	GPS location
7	Battery Charge indicator
8	Measurement description (within the Instrument Settings Summary)
9	Touch Screen Soft key Menu
10	Trace 4 (TR4) display – S11 Log Mag
11	Touch Screen Function Hard Keys

Figure 2-6. VNA Display with GPS On

Display Settings

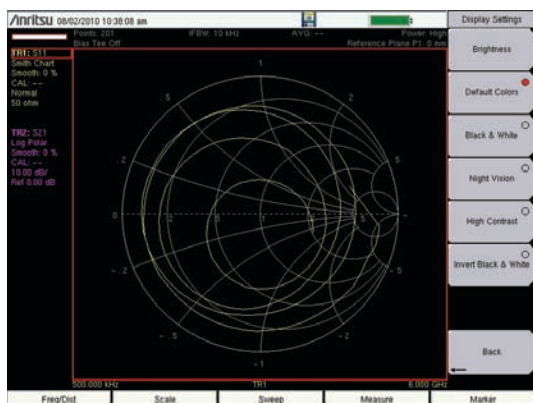
In addition to the default color display, VNA Master offers the following display settings:

Black and White for printing and viewing in broad daylight conditions (no color)

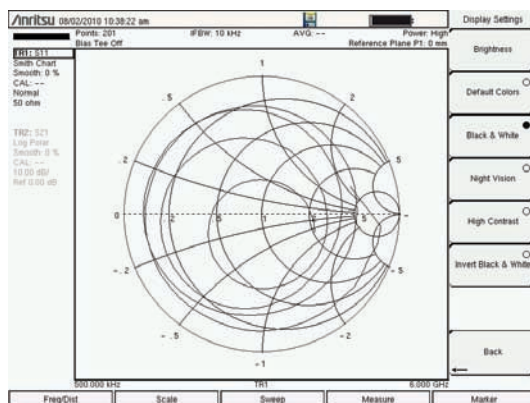
Invert Black and White exchanges black for white on the display for best color printing

Night Vision optimized for night-time viewing

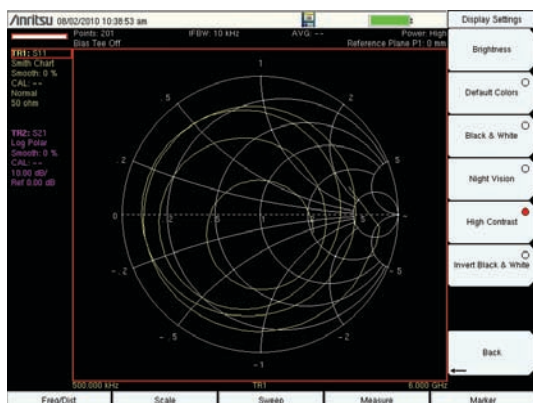
High Contrast for other challenging viewing conditions



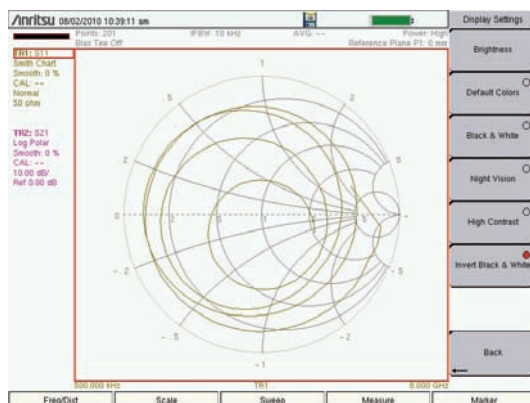
Default Colors



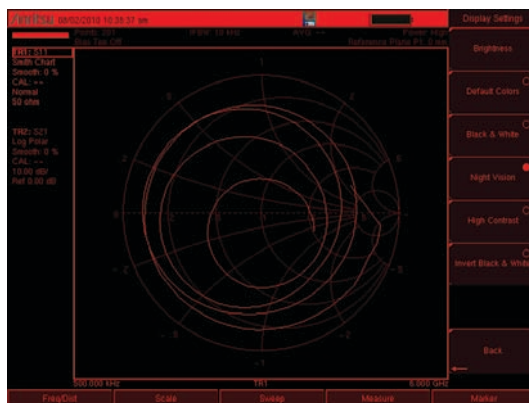
Black & White



High Contrast



Invert Black & White



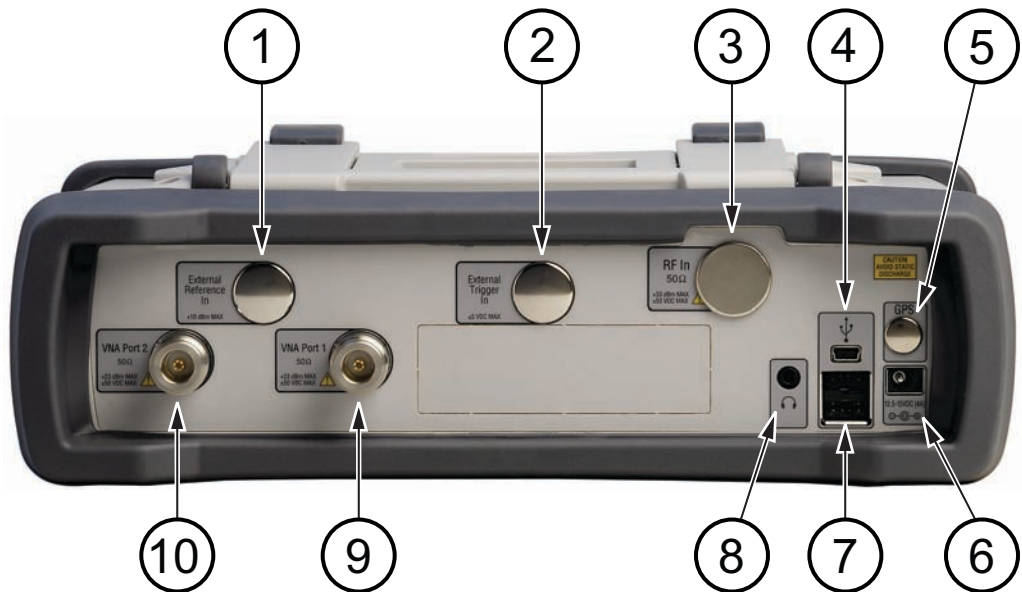
Night Vision

Figure 2-7. VNA Master Display Settings

2-5 Test Panel Connector Overview

MS2024B and MS2025B

Test panel connectors for the VNA Master MS2024B are shown in [Figure 2-8](#).



1	External Reference In (not installed in MS202xB models)
2	External Trigger In (not installed in MS202xB models)
3	RF In (not installed in MS202xB models)
4	USB Mini-B (Full Speed, USB 2.0)
5	GPS Antenna (location when installed with Option 31))
6	External Power
7	USB Type A (Full Speed, USB 2.0)
8	Headphone
9	VNA Port 1 50 ohm (Green LED indicates the Port is Transmitting Power)
10	VNA Port 2 50 ohm (Green LED indicates the Port is Transmitting Power)

Figure 2-8. MS2024B Test Panel Connectors

USB Interface – Type A

The VNA Master has two Type A USB connectors (refer to item “7” in [Figure 2-9 on page 2-13](#)) that accept USB Flash Memory devices for storing measurements, setup data, and screen images.



Figure 2-10. MS2035B Connected to PC via USB Mini-B

USB Interface – Mini-B

The USB 2.0 Mini-B connector (refer to item “4” in [Figure 2-9 on page 2-13](#)) can be used to connect the VNA Master directly to a PC, as shown in [Figure 2-10](#). The first time the VNA Master is connected to a PC, the normal USB device detection by the computer operating system will take place. The CD-ROM that is shipped with the instrument contains a driver for Windows XP that is installed when Master Software Tools is installed. Drivers are not available for earlier versions of the Windows operating system. During the driver installation process, place the CD-ROM in the computer drive and specify that the installation wizard should search the CD-ROM for the driver.

Note

For proper detection, either Line Sweep Tools or Master Software Tools must be installed on the PC prior to connecting the VNA Master to the USB port.

Ethernet Interface (Option 411)

On all VNA Master models MS20xxB with Option 411, the Ethernet connector can be used to connect the VNA Master directly to a PC. Refer to [Appendix F, “LAN and DHCP”](#) for more information.

Headset Jack

The headset jack provides audio output from the built-in AM/FM/SSB demodulator for testing and troubleshooting wireless communication systems. The jack accepts a 2.5 mm 3-wire miniature phone plug such as those commonly used with cellular telephones. (refer to item “8” in [Figure 2-9 on page 2-13](#))

2-6 Connector Care

Visually inspect connectors for general wear, for cleanliness, and for damage, such as bent pins or connector rings. Repair or replace damaged connectors immediately. Dirty connectors can limit the accuracy of your measurements. Damaged connectors can damage the instrument. Connection of cables carrying an electrostatic potential, excess power, or excess voltage can damage the connector or the instrument or both. Connection of cables with inadequate torque settings can affect measurement accuracy. Over torquing connectors can damage the cable, the connector, the instrument, or all of these items.

Connecting Procedure

1. Carefully align the connectors.

The male connector center pin must slip concentrically into the contact fingers of the female connector.

2. Push connectors straight together. Do not twist or screw them together.
3. To tighten, turn the connector nut, not the connector body. Major damage can occur to the center conductor and to the outer conductor if the connector body is twisted.
4. If you use a torque wrench, then initially tighten by hand so that approximately 1/8 turn or 45 degrees of rotation remains for the final tightening with the torque wrench.

Relieve any side pressure on the connection (such as from long or heavy cables) in order to assure consistent torque. Use an open-end wrench to keep the connector body from turning while tightening with the torque wrench.

Do not over torque the connector.

Disconnecting Procedure

1. If a wrench is needed, then use an open-end wrench to keep the connector body from turning while loosening with a second wrench.
2. Complete the disconnection by hand, turning only the connector nut.
3. Pull the connectors straight apart without twisting or bending.

2-7 VNA Master Connectors

External Trigger In (50 ohm)

A TTL signal that is applied to the External Trigger In female BNC input connector causes a single sweep to occur. Maximum input is ± 50 VDC. In the Spectrum Analyzer mode, it is used in zero span, and triggering occurs on the rising edge of the signal. After the sweep is complete, the resultant trace is displayed until the next trigger signal arrives (refer to item “2” in [Figure 2-9 on page 2-13](#)).

To prevent damage to your instrument, do not use pliers or a wrench to tighten the BNC connector. Do not overtighten the connector.

External Reference In (50 ohm)

The BNC female connector (refer to item “1” in [Figure 2-9 on page 2-13](#)) is used for connection of an external frequency reference. Maximum input is ± 5 VDC. Press the **External Reference** soft key under the System menu and then the Application Options menu to set the reference to external (10 MHz). The amplitude of the External Reference should be between -10 dBm and $+10$ dBm.

To prevent damage to your instrument, do not use pliers or a wrench to tighten the BNC connector. Do not overtighten the connector.

RF In (50 ohm)

This connector (refer to item “3” in [Figure 2-9 on page 2-13](#)) provides the input 50 ohm interface for the Spectrum Analyzer function. Maximum input is specified in the Technical Data Sheet (for the Anritsu part number, refer to [Appendix A](#)).

To prevent damage to your instrument, do not use pliers or a plain wrench to tighten the Type-N connector. Do not overtighten the connector. The recommended torque is 12 lbf · in to 15 lbf · in (1.36 N · m to 1.70 N · m).

GPS Antenna Connector (Option 31)

The GPS antenna connection on the VNA Master is type SMA-female (refer to item “5” in [Figure 2-9 on page 2-13](#)). The GPS function is described in [Chapter 6, “GPS \(Option 31\)”](#).

To prevent damage to your instrument, do not use pliers or a plain wrench to tighten the SMA connector. Do not overtighten the connector. The recommended torque is 8 lbf · in (0.9 N · m or 90 N · cm).

VNA Port-1 (50 ohm)

This connector (refer to item “10” in [Figure 2-9 on page 2-13](#)) provides the input/output 50 ohm interface for reflection measurements of the Vector Network Analyzer at Port 1.

To prevent damage to your instrument, do not use pliers or a plain wrench to tighten the Type-N connector. Do not overtighten the connector. The recommended torque is 12 lbf · in to 15 lbf · in (1.36 N · m to 1.70 N · m).

VNA Port-2 (50 ohm)

This connector (refer to item “11” in [Figure 2-9 on page 2-13](#)) provides the input 50 ohm interface for transmission measurements of the Vector Network Analyzer at Port 2. Bias Tee output is also available from this port (with Option 10).

To prevent damage to your instrument, do not use pliers or a plain wrench to tighten the Type-N connector. Do not overtighten the connector. The recommended torque is 12 lbf · in to 15 lbf · in (1.36 N · m to 1.70 N · m).

2-8 Symbols and Indicators

The following symbols and indicators indicate the instrument status or condition on the display.

The instrument settings that are unique to each trace are summarized in an information block on the left side of the measurement display screen (refer to item “1” in [Figure 2-6](#)). Each block contains the trace number followed by the S-parameter that is assigned to that trace (TR4: S21, for example). If the trace has Trace Math applied to it, then the math function is also displayed on that line (TR1: S11/M1, for example), where M1 is the memory that is associated with TR1, and the math function is Trace/Memory). The S-parameter that is assigned to the trace memory is shown (if enabled) at the top of each trace information block (M1: S11, for example). Each trace block also includes the Graph type, the smoothing percentage, the calibration status, and the scale (Resolution per Division and the Reference Value). The calibration status indicates whether the calibration is ON, OFF, or non-existent (--) for the specific S-parameter that is assigned to each trace. If the Calibration is ON, then its validity is also displayed (OK,?, or X).

For calibration procedures, refer to the Cable and Antenna Measurement Guide (PN: 10580-00241) listed in [Appendix A](#).

Battery Symbols

The battery symbol above the display indicates the charge remaining in the battery. The colored section inside the symbol changes size and color with the charge level.



Figure 2-11. Battery Status

Green with Black Plug body: Battery is fully charged and external power is applied

Green: Battery is 30% to 100% charged

Yellow: Battery is 10% to 30% charged

Red: Battery 0% to 10% charged

Lightning Bolt: Battery is being charged (any color symbol, [Figure 2-12](#))

Detailed battery information is also available in the Status dialog box (**System > Status**).

When either the AC-DC Adapter or the Automotive Cigarette Lighter Adapter is connected, the battery automatically receives a charge, and the battery symbol with the lightning bolt is displayed (Figure 2-12).



Figure 2-12. Battery Charging Icon

The green Charge LED flashes when the battery is charging, and remains on steady when the battery is fully charged.

Caution Use only Anritsu-approved batteries, adapters, and chargers with this instrument.

When operating from external power without a battery installed, the battery symbol is replaced by a red plug body (Figure 2-13).



Figure 2-13. Battery Not Installed

Additional Symbols

Single Sweep

Single Sweep is selected. Press Continuous in the **Sweep** menu to resume continuous sweeping.

Floppy Disk Icon

Shortcut to the **Save** submenu. Touch the icon to open the touch screen keyboard for saving measurements, setups, or screen displays.



Figure 2-14. Floppy Disk Icon

2-9 Data Entry

Numeric Values

Numeric values are changed using the rotary knob, arrow keys, or the keypad. Pressing one of the main menu keys (hard keys) displays a list of submenus on the right side of the touch screen. When the value on a soft key (submenu key) is displayed in red, it is ready for changing. When using the rotary knob or arrow keys the changing value is shown on the submenu and in red on the graticule. When using the keypad, the new value is shown in red on the graticule and the submenu changes to Units. Selecting a unit for the new value completes the entry.

Parameter Setting

Pop-up list boxes or edit boxes are used to provide selection lists and selection editors. Scroll through a list of items or parameters with the arrow keys, the rotary knob, or the touch screen. These list boxes and edit boxes frequently display a range of possible values or limits for possible values.

Finalize the input by pressing the **Enter** key. At any time before finalizing the input, press the escape (**Esc**) key to abort the change and retain the previously existing setting.

Cable parameters can be added to list boxes by creating them in Line Sweep Tools (LST). Signal Standard parameters can be added to list boxes by creating them in Master Software Tools (MST).

Text Entry

When entering text, as when saving a measurement, the touch screen keyboard is displayed (Figure 2-15). Characters are entered directly with the touch screen keyboard. The keypad can be used for numeric entry. The left and right arrow keys scroll the cursor through the filename. Refer to “Save Menu” on page 4-9 for additional information.

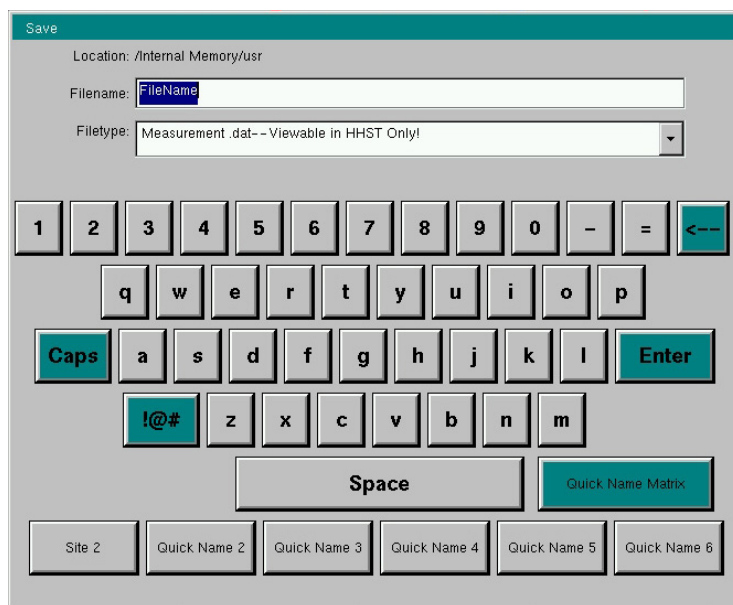


Figure 2-15. Touch Screen Keyboard

2-10 Mode Selector Menu

To access the functions under the Mode menu, press the **Shift** key, then the **Mode (9)** key. Use the directional arrow keys, the rotary knob, or the touch screen to highlight the selection, and press the **Enter** key to select. The list of modes that appear in this menu varies depending upon the options that are installed and activated in the instrument. [Figure 2-16](#) is an example of the Mode menu. Your instrument may not show the same list. The current mode is displayed below the battery symbol.

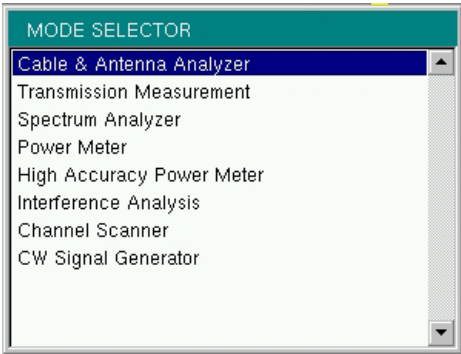


Figure 2-16. Mode Selector Menu

Note	The display of the Mode Selector varies depending on VNA Master model and installed options.
-------------	--

The **Menu** key is another option to quickly change measurement modes. Press the **Menu** key then select one of the Measurement icons in the top two rows ([Figure 2-2 on page 2-4](#)).

Chapter 3 — Quick Start Guide

3-1 Introduction

This chapter provides a brief overview of basic measurement setups. For detailed measurement information, refer to a specific measurement guide listed in [Appendix A, “Supplemental Documentation”](#). This chapter provides quick start measurement information for the following measurement modes:

- [Section 3-3 “Vector Network Analyzer” on page 3-2](#)
- [Section 3-5 “Spectrum Analyzer” on page 3-9](#)

3-2 Measurement Mode Selection

Press the **Menu** key and use the touch screen to select the appropriate measurement icon.

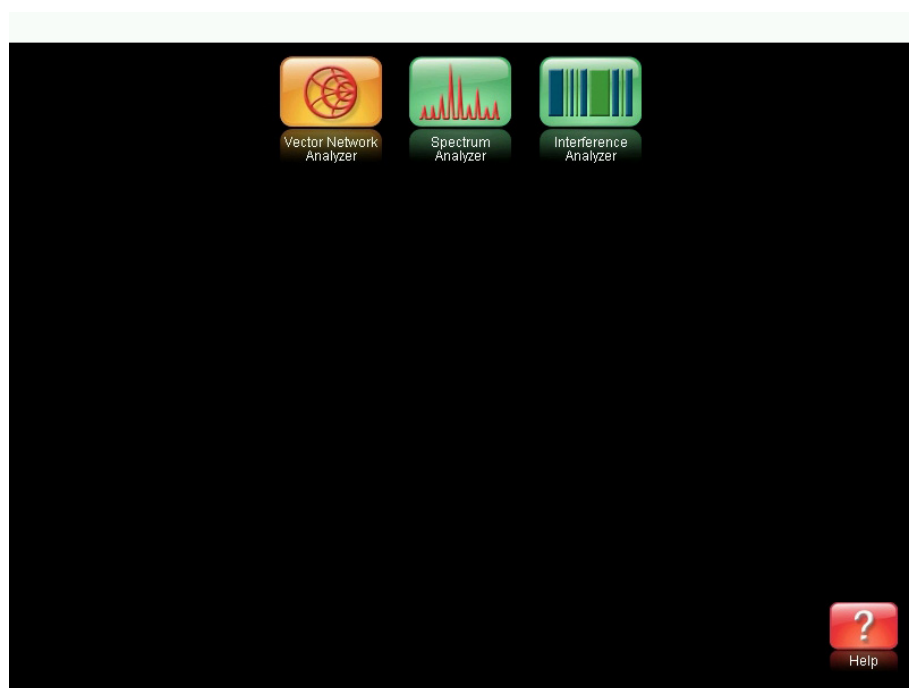


Figure 3-1. Menu Screen with Icons for Installed Measurement Modes

Note The display of the Menu screen varies depending on installed options.

3-3 Vector Network Analyzer

Set the instrument to Vector Network Analyzer mode as described in the previous section.

Selecting the Measurement Type

Press the **Measure** main menu key (hard key) and select the appropriate measurement.

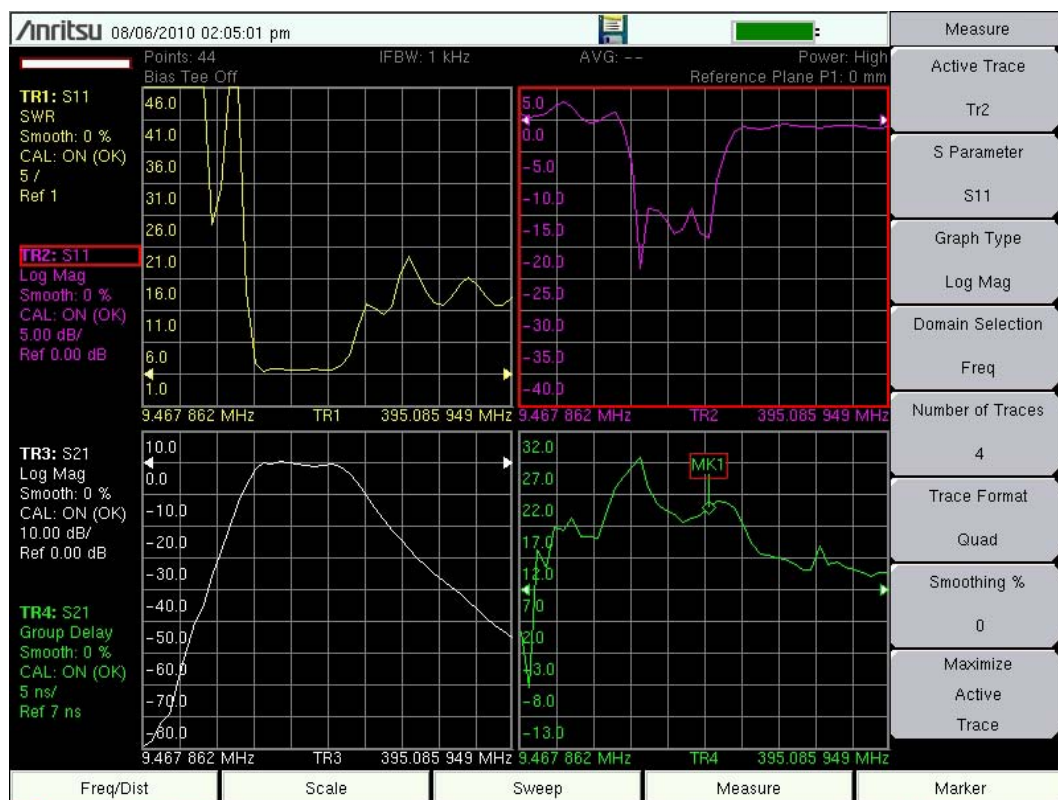


Figure 3-2. Measurement Menu

Setting the Frequency

1. Press the **Freq/Dist** main menu key (hard key).
2. Press the **Start Freq** soft key (submenu key) and use the keypad, rotary knob, or the arrow keys to enter the start frequency.
3. Press the **Stop Freq** soft key and use the keypad, rotary knob, or the arrow keys to enter the stop frequency.

Setting the Scale

1. Press the **Scale** main menu key (hard key).
2. For Smith Charts, select the appropriate zoom level. The graph expands or compresses around the central reference impedance of the Smith Chart
3. For rectangular graphs, such as Log Mag or phase, press the **Resolution per Div** submenu key to change the scale between vertical divisions of the graph.
 - a. Press the **Reference Value** submenu key to change the value indicated by the arrow-shaped Reference Line indicator.
 - b. Press the **Reference Line** submenu key to change the location of the arrow-shaped reference line indicator. A value of 0 (zero) sets the reference line indicator to the bottom of the graph..

Note

For Amplitude in Smith Chart measurements, refer to "Smith Chart" in the Vector Network Analyzer Measurement Guide, listed in [Appendix A](#).

Turning On Markers

1. Press the **Marker** main menu key (hard key).
2. Press the **Marker** soft key to open the Select Marker list box and then select a marker by scrolling with the rotary knob or the arrow keys, then press **Enter**. Unused markers are labeled OFF. The number on the **Marker** soft key indicates the active marker.
3. If desired, press the **Marker on Trace** soft key to select which trace is associated with the marker, or select **All traces**.
4. Use the rotary knob, arrow keys, or touch and drag to move the Marker. The frequency of the active Marker is shown in the upper-left corner of the display screen.
5. Delta Markers are available. For a selected marker, toggle the **Marker Type** soft key to select **Ref**, **Delta**, or **Off**. Assign the Delta marker to a reference marker by using the **Avail Ref Mkr** soft key

Peak and Valley Search Markers

When making measurements, the **Peak Search** and **Valley Search** features can be used to quickly place a Marker on a maximum or minimum point of a trace.

1. With an active marker, press the **Marker Search** soft key.
2. Press the **Peak Search** or the **Valley Search** soft key to find the maximum or minimum value on the trace that is associated with the current marker. If the Marker is on **All traces**, then this action finds the peak or valley of the trace that is currently active.

Find Marker Value

Hunting for specific values on a trace can be useful, such as -3 dB points on a filter. The VNA Master allows you to do this quickly and easily. Each marker can be associated with a Find value.

1. With an active marker, press the **Marker Search** soft key.
2. Press the **Enter Marker** soft key to set the desired trace value for markers to find. When the value is entered, the active marker automatically finds the trace value nearest to the entered value.
3. At any time, the **Find Marker Value** soft key can be used to find the next point to the right of the current marker location whose value is closest to the Find value.

Setting Up Delta Markers

If the intent is to conduct a delta measurement, then two markers are necessary: one to be the reference marker and one to be the delta marker.

Example Setup:

1. Press the **Marker** main menu key (hard key).
2. Turn on Marker 1 (to be the Ref marker) and assign it to a trace.
 - a. Press **Marker** and select MK1 from the list box. Then press **Enter**.
 - b. The **Marker Type** soft key is set by default to Ref.
 - c. Press **Marker on Trace**. Then scroll in the **Select One** list box to choose a trace, and press **Enter**.
3. Turn on Marker 2 and toggle the **Marker Type** from Ref to Delta.
4. Assign Marker 2 to Marker 1 by pressing the **Avail Ref Mkr** soft key to open the **Select One** list box. Scroll to choose trace 1 (TR1) and press **Enter**.

The fourth step allows you to specify marker delta on one trace, and it also allows you to specify marker delta between two traces (Ref marker and Delta marker on different traces).

Note

The **Select Marker** list box includes the current location, readout style, and delta status (if they exist). Otherwise, it indicates **Off**.

Setting a Single Limit Line

1. Press **Shift** and then **Limit** (6) to enter the Limit menu.
2. Press the Limit On/Off key to turn on the Limit.
3. Press Single Limit and then use the numeric keypad, the arrow keys, or the rotary knob to change the limit value and then press **Enter**.

Note

Refer to the Vector Network Analyzer Measurement Guide (listed in [Appendix A](#)) for creating multi-segment limit lines.

4. Press the Limit Alarm key to turn on or off the Limit Alarm.

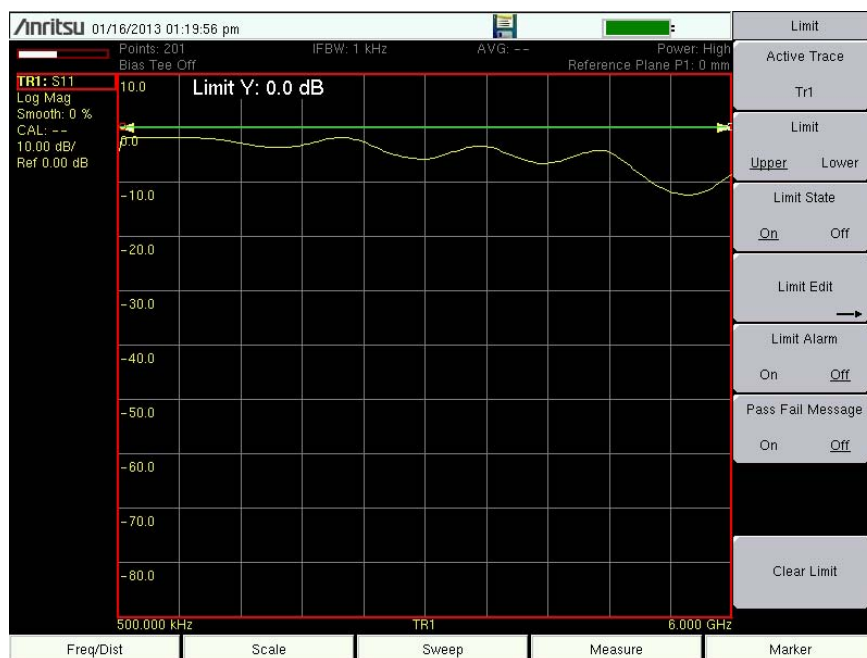


Figure 3-3. Single Limit Lines

Setting Up Distance Domain (Option 501)

This option is fully described in the Vector Network Analyzer Measurement Guide. Refer to [Appendix A, "Supplemental Documentation"](#) for a list of these guides and their Anritsu part numbers. Measurement Guides are available as free downloads from the Anritsu Web site.

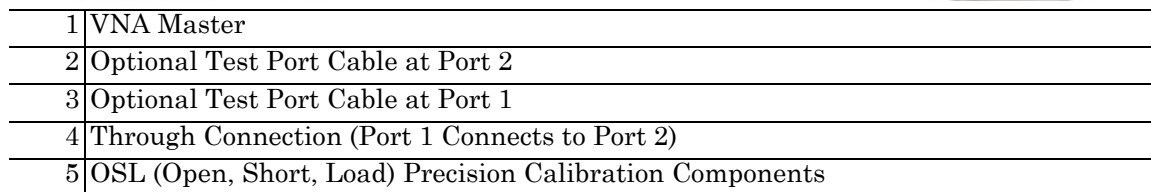
3-4 Calibration Considerations

Various 2-port calibrations are available in the VNA Master. Transmission response is the simplest and requires only one connection during calibration, but it does not correct for test port match errors. 1-Path 2-Port calibration requires four calibration connections and corrects for the transmit port match, but does not correct for the receive port.

The previously described calibration considerations omit isolation steps in which loads are connected to each test port. During the isolation step of the calibration procedure, the VNA Master measures the isolation between test ports in order to achieve best dynamic range performance.

Note

The Vector Network Analyzer Calibration menu is the same one that is used in the Vector Voltmeter menu. Refer to section "Calibration Menus" in Chapter 5 of the Vector Network Analyzer Measurement Guide (refer to [Appendix A](#)) for more information about the calibration menu. Note that some calibration parameters are shared between the Vector Network Analyzer and Vector Voltmeter mode, and that some parameters are different because they were optimized for the specific mode application.



3-7

When you perform a calibration, the correction coefficients are calculated for specific S-parameters (depending on the type of calibration chosen) and for instrument settings (frequency range, number of points, and power level). The term "calibration correction" refers to the measurement correction coefficients that are applied to measurements as a result of your calibration.

When calibration correction is On, the correction is applied to all applicable S-parameters. For example, if a Full S_{11} (1-port) calibration is performed, then only traces that measure S_{11} have a valid calibration. For those traces, the calibration information data in the Instrument Settings Summary (item "1" in Figure 2-1 on page 2-2) shows "**CAL: ON (OK)**". All other traces that do not measure S_{11} display "**CAL: --**" to indicate that no valid calibration is available for those traces. The calibration correction can also be turned off manually under the Calibration menu by toggling the Cal Correction soft key from On to Off. In that case, the display shows "**CAL: OFF**" for all traces that have valid correction data available.

Note that "**CAL: OFF**" means that a calibration correction has been created, but it is not currently being used. This is different from "**CAL: --**", which means that no valid calibration correction is available for the current setting.

When you have Cal Correction on, you cannot increase the frequency range or the number of points. You can, however, reduce the frequency range or decrease the number of points without forcing the calibration to become invalid. When reducing the frequency range, the VNA Master uses the appropriate points within the new frequency range that have correction coefficients applied to them. In that case, you can observe that the number of points that are being used for calibration correction are automatically reduced.

If you reduce only the number of points, then the frequency range is not changed. The VNA Master finds a subset of the original points in the sweep that can be used. You can therefore notice that the instrument may not use the exact number of points that you have entered. It picks a specific number of points that allow the calibration correction to continue to be valid. If you use the rotary knob, you will more easily find the available number of points that can be set. For example, if you calibrated with 201 points, then you can observe that you can reduce the number of points to 101, 68, 51, 41, and so forth.

If you change the source power setting, the calibration status is changed to "**CAL: ON (?P)**", which indicates that source power has changed since the instrument was calibrated (from Low to High, or from High to Low). In this case, the calibration may still be valid, but a new calibration is recommended.

Another status information display that you may see is "**CAL: ON (?T)**" which indicates that the instrument temperature has deviated by more than a set amount since the time that the calibration was conducted. The calibration is most likely still valid, but a new calibration is recommended. If you see "**CAL: ON (X)**" on the display, then this indicates that the instrument temperature has deviated (since the time the calibration was conducted) by an amount that has more than likely rendered the calibration invalid. When this occurs, a new calibration is highly recommended before further measurements are conducted.

Only one calibration is available at one time. Performing a new calibration overwrites any existing calibration. You can, however, store a measurement setup (with CAL), which also stores the calibration. You can therefore have multiple calibrations available (as long as the calibration settings and conditions continue to apply).

Cal Type

The Cal Type soft key is found in the Calibration Menu (shown in the VNA Measurement Guide). The Calibration Type list box provides the complete selection of available calibration types.

3-5 Spectrum Analyzer

Set the instrument to Spectrum Analyzer mode as described in [Section 3-2 "Measurement Mode Selection"](#) on page 3-1.

Set Start and Stop Frequencies

1. Press the **Freq** main menu key (hard key).
2. Press the Start Freq soft key (submenu key).
3. Enter the desired start frequency using the keypad, the arrow keys, or the rotary knob. When entering a frequency using the keypad, the soft key labels change to GHz, MHz, kHz, and Hz. Press the appropriate unit key. Pressing the **Enter** key has the same affect as pressing the MHz soft key.
4. Press the Stop Freq soft key.
5. Enter the desired stop frequency.

Enter the Center Frequency

1. Press the **Freq** main menu key (hard key).
2. Press the Center Freq soft key.
3. Enter the desired center frequency using the keypad, the arrow keys, or the rotary knob. When entering a frequency using the keypad, the soft key labels change to GHz, MHz, kHz, and Hz. Press the appropriate unit key. Pressing the **Enter** key has the same affect as pressing the MHz soft key.

The center frequency and span is shown at the bottom of the screen.

Select a Signal Standard

1. Press the **Freq** main menu key (hard key).
2. Press the Signal Standard soft key. The Signal Standards dialog box opens.
3. Highlight a signal standard and press **Enter** to select.
4. Press the Channel soft key to change the channel value in the Channel Editor.

The signal standard is shown in yellow at the top of the screen.

Set the Measurement Bandwidth

1. Press the **BW** main menu key (hard key) to display the BW menu.
 - Press the RBW and/or the VBW soft key to manually change the values.
 - Set RBW and VBW automatically by pressing the Auto RBW soft key or the Auto VBW soft key.

2. Press the RBW/VBW soft key to change the resolution bandwidth and video bandwidth ratio.
3. Press the Span/RBW soft key to change the span width to resolution bandwidth ratio.

Set the Amplitude

Press the **Amplitude** main menu key (hard key) to display the Amplitude menu.

Set Amplitude Reference Level and Scale

1. Press the **Reference Level** soft key and use the arrow keys, rotary knob, or the keypad to change the reference level. Press **Enter** to set the reference level value.
2. Press the **Scale** soft key and use the arrow keys, rotary knob, or the keypad to enter the desired scale. Press **Enter** to set the scale value.

Set Amplitude Range and Scale

1. Press the **Auto Atten** soft key to set an optimal reference level based on the measured signal.
2. Press the **Scale** soft key.
3. Enter the desired scale units by using the keypad, the arrow keys, or the rotary knob. Press **Enter** to set. The y-axis scale is automatically renumbered.

Power Offset Set Up for Compensating External Loss

To obtain accurate results, compensate for any external attenuation by using power offset. In power offset mode, the compensation factor is in dB. (External attenuation can be created by using an external cable or an external high power attenuator.)

Press the **RL Offset** soft key and use the keypad, the arrow keys, or the rotary knob to enter the desired offset value. When using the rotary knob, the value changes in increments of 0.1 dB. Using the **Left/Right** arrow keys changes the value in 10% increments of the value shown on the **Scale** soft key. When using the **Up/Down** arrow keys, the value changes in the increment shown on the **Scale** soft key. When using the keypad, enter the new value then press **Enter** or the **dB** soft key to set the value. The power offset is displayed in the instrument settings summary column on the left side of the measurement display.

Set the Span

1. Press the **Span** main menu key (hard key) or the **Freq** hard key followed by the **Span** soft key.
2. To select full span, press the **Full Span** soft key. Selecting full span overrides any previously set Start and Stop frequencies.
3. For a single frequency measurement, press the **Zero Span** soft key.

Note

To quickly move the span value up or down, press the **Span Up 1-2-5** or **Span Down 1-2-5** soft keys. These keys facilitate a zoom-in, zoom-out feature in a 1-2-5 sequence.

Single Limit Line

Press the **Limit** menu key to display the Limit menu.

1. Press the Limit (Upper / Lower) soft key to select the desired limit line, Upper or Lower.
2. Activate the selected limit line by pressing the On Off soft key so that On is underlined.
3. Press the Limit Move soft key to display the Limit Move menu. Press the first Move Limit soft key and use the arrows keys, rotary knob, or keypad to change the dBm level of the limit line.
4. Press the Back soft key to return to the Limit menu.
5. If necessary, press the Set Default Limit soft key to redraw the limit line in view.

Create a Limit Envelope

1. Press **Shift** then **Limit (6)** to open the Limit menu.
2. Press Limit Envelope.
3. Press the Create Envelope key.

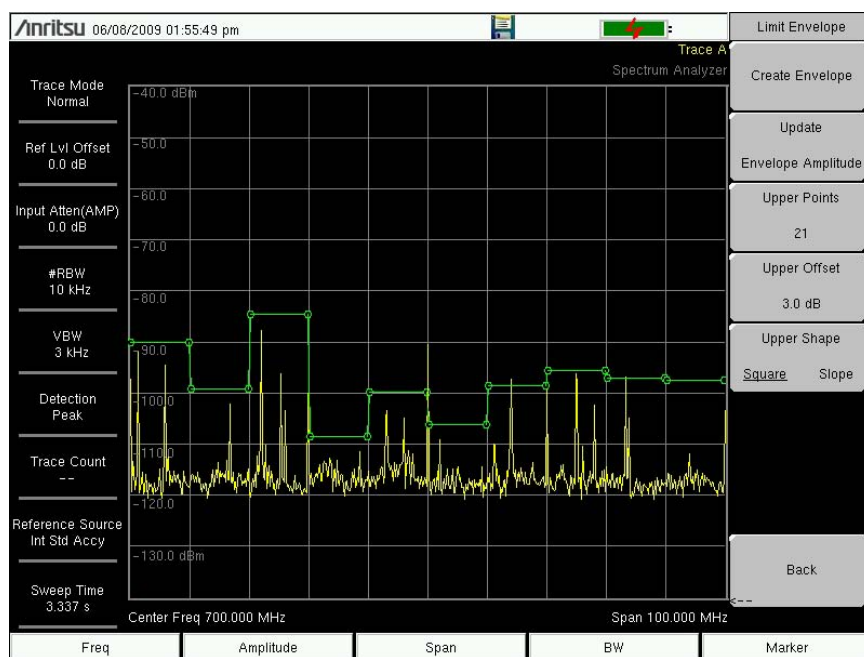


Figure 3-5. Limit Envelope

Setting Up Markers

Press the **Marker** main menu key (hard key) to display the Marker menu.

Selecting, Activating, and Placing a Marker

- 1. Press the Marker 1 2 3 4 5 6 soft key (soft key) and then select the desired marker by using the touch screen marker buttons. The selected marker is underlined on the Marker soft key.
- 2. Press the On Off soft key so that On is underlined. The selected marker is displayed in red and ready to be moved.
- 3. Use the rotary knob to place the marker on the desired frequency.
- 4. Repeat Step 1 through Step 3 to activate and move additional markers.

Selecting, Activating, and Placing a Delta Marker:

- 1. Press the Marker 1 2 3 4 5 6 soft key and select the desired delta marker. The selected marker is underlined.
- 2. Press the Delta On Off soft key so that On is underlined. The selected marker is displayed in red and ready to be moved.
- 3. Use the rotary knob to place the delta marker on the desired frequency.
- 4. Repeat Step 1 through Step 3 to activate and move additional markers.

Viewing Marker Data in a Table Format

- 1. Press the More soft key.
- 2. Press the Marker Table On Off soft key so that On is underlined. All marker and delta marker data are displayed in a table under the measurement graph.

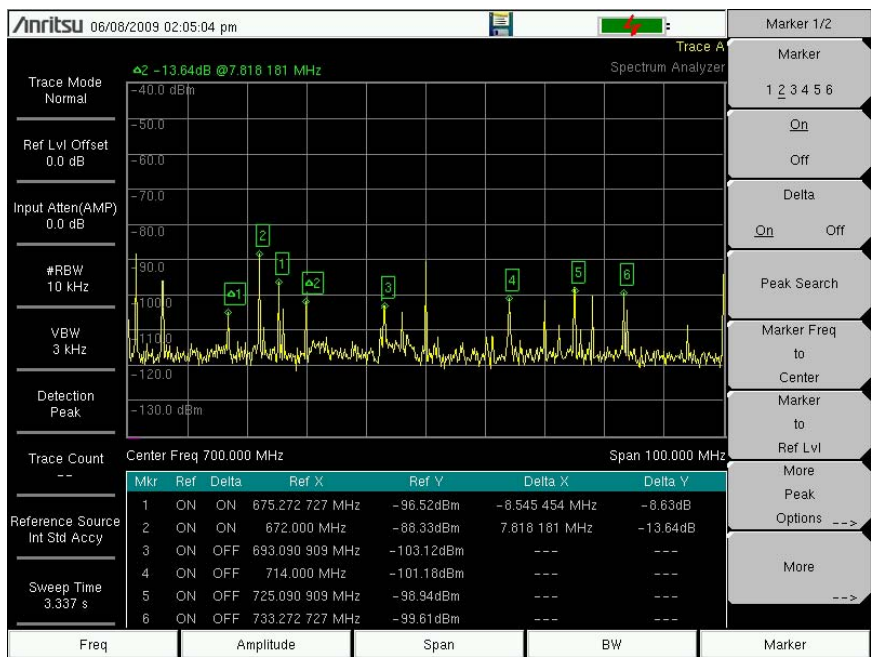


Figure 3-6. Marker Table

Select a Smart Measurement Type

In Spectrum Analyzer mode, press **Shift** then **Measure (4)** and select a smart one-button measurement using the soft keys (submenu keys). The Spectrum Analyzer Measurement Guide includes a Field Measurements section about smart measurements, which states:

In Spectrum Analyzer mode, smart one-button measurements are built-in for field strength, occupied bandwidth, channel power, and carrier to interference ratio (C/I) tests. In addition, AM/FM/SSB demodulation is available to aid in the identification of interfering signals.

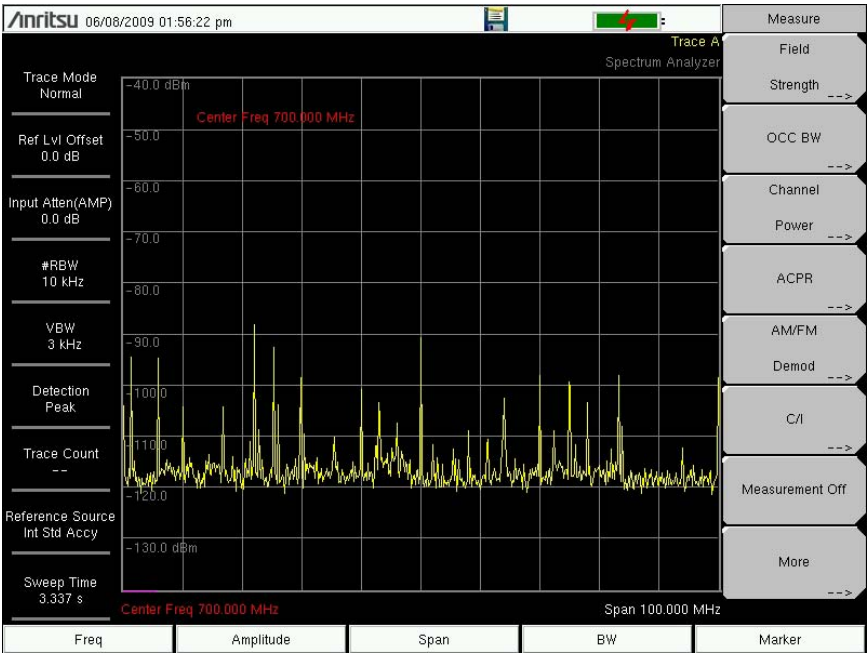


Figure 3-7. Spectrum Analyzer Measure Menu with Smart Measurements

3-6 Saving Measurements

Measurement files can be stored in the following formats:

- *.jpg JPEG images, filename.jpg
- *.mna Measurements, filename.mna
- *.stp Setups, filename.stp
- *.s2p S2P (SnP), filename.s2p
- *.spa Spectrum Analyzer Measurements, filename.spa
- *.csv Text file with Comma Separated Values (CSV), filename.csv
- *.txt Text file with tab separated values, filename.txt
- *.lim Limit lines, filename.lim

Saving files in .mna format is recommended because it enables you to edit, view, and analyze traces with Line Sweep Tools. For more information, refer to the Line Sweep Tools Help file for the instrument and measurement files supported.

Procedure for saving files:

1. Press **Shift** then **File (7)**.
2. Press **Save Measurement**.
3. Press **Change Save Location** and set the current location to be the USB flash drive or internal memory, and then press **Set Location**.
4. In vector network analyzer mode, press **Change Type (Setup/JPG/...)** and select the desired file type from the Select File Type list box.
5. In spectrum analyzer mode or interference analyzer mode, press one of the 4 soft keys to specify a file type.
6. Enter the filename by using the keyboard and then press **Enter**.

Refer to [Chapter 4, "File Management"](#) for more details about working with files.

Chapter 4 — File Management

4-1 Introduction

This chapter describes the file management features of the VNA Master and describe the **File** menu. The submenus under this menu allow you to save, recall, copy, and delete files in internal memory or an external USB flash drive.

4-2 File Types

Filename extensions that are used in the VNA Master:

- | | |
|-------|---|
| *.jpg | JPEG images, filename.jpg |
| *.mna | Vector Network Analyzer Measurements, filename.mna |
| *.stp | Setups, filename.stp |
| *.s2p | S2P (SnP), filename.s2p |
| *.spa | Spectrum Analyzer Measurements, filename.spa |
| *.csv | Text file with Comma Separated Values (CSV), filename.csv |
| *.txt | Text file with tab separated values, filename.txt |
| *.lim | Limit lines, filename.lim (Limit lines are available only in Spectrum Analyzer mode.) |

S2P is a standard ASCII text file format that is used for scattering parameters from a 2-Port measurement. This is a subset of SnP (where n equals the number of ports). An S2P file can be used as input for signal analysis.

Note

The CSV and Text files contain setup information and final formatted data that are shown on the instrument display screen. This file information includes any post-processing that was done on the data (smoothing, trace math, time domain, and so forth). These files contain the data for any traces that are displayed, including the memory traces. They also contain the markers that are turned on when the file is saved.

4-3 Managing Files

Press the **Shift** key then the **File** (7) key on the numeric keypad to list the **File** menu. Follow the additional steps below.

Note	When navigating through the File menu, pressing the Esc key returns to the previous menu.
-------------	---

Save Files

Set the Save Location

Press **Save** then the **Change Save Location** soft keys (submenu keys) and select the location to save files. You can save files to the internal memory or to an external USB flash drive. You can also create new folders. If an external USB flash drive is connected or disconnected, press **Refresh Directories** to update the location tree. Press the **Set Location** key to store the save location.

Save Measurement As

The **Save Measurement As** key is used to quickly save measurements with a specific file name. The VNA Master saves the measurement with the latest file name that was used to save a measurement and with a number that is automatically incremented and appended to the end of the file name. For instance, if the last measurement was saved with the name **System Return Loss**, **Save Measurement As** saves the next measurement as **System Return Loss_#1**, **System Return Loss_#2** etc. The file name used can be changed using the **Save** dialog box (Figure 4-1).

Save a Measurement

Press the **Save Measurement** key and enter the name for the measurement file. The measurement file can be stored as .MNA.

Save a Setup

Press the **Save** soft key, type a name for the setup file, confirm that the file type is **Setup** using the **Change Type** key or the touchscreen, and then press **Enter** to save.

Create a Menu Shortcut for a Setup File

Press the **Recall** soft key to display saved setup files. Locate the setup file to shortcut and then press and hold on the file name for a few seconds. Select a location in the shortcut grid to save the setup file.

Save a Measurement Screen as JPEG

Press the **Save** soft key, type a name for the JPEG file, confirm that the file type is **Jpeg**, and press **Enter** to save.

Save Dialog Box

The save dialog box (Figure 4-1) is used to store files on the internal memory or an external flash drive. The file type, file name, and save location are set starting with this display. Refer to "Save Menu" on page 4-9 and "Save Location Menu" on page 4-10 for details.

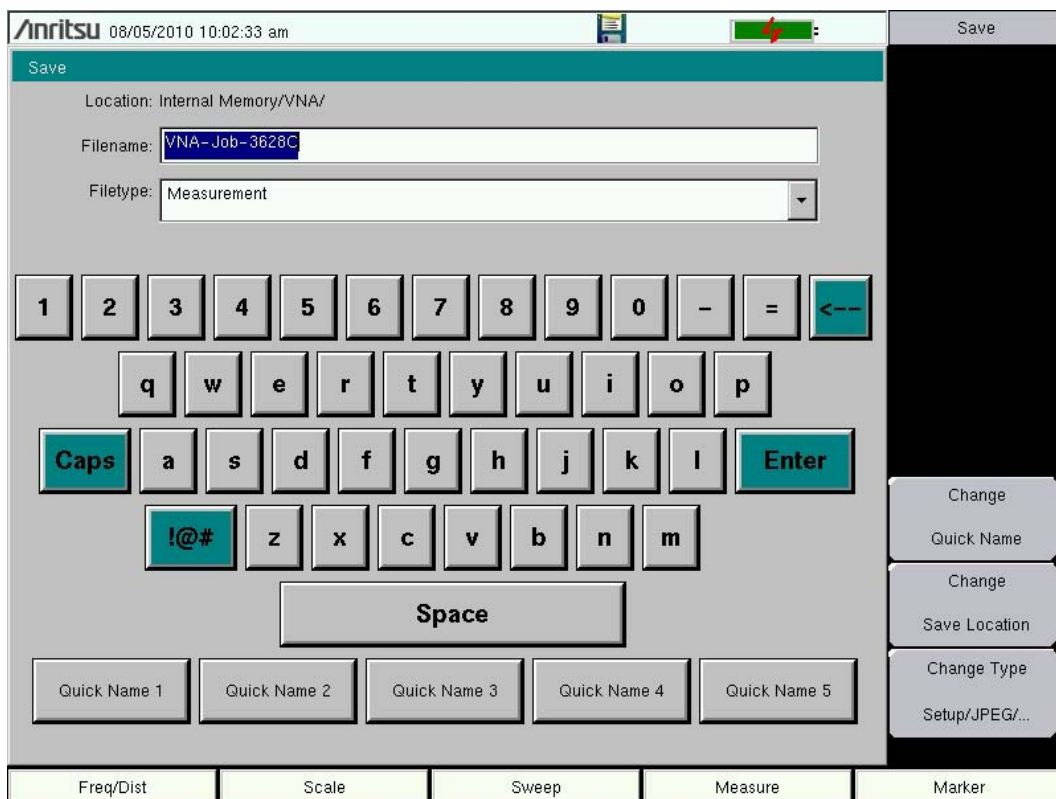


Figure 4-1. Save Dialog Box

Quick Name Keys

Quick Name keys (located below the keyboard in Figure 4-1) allow you to enter quick names for frequently used parts of file measurement names. To edit the keys, press the **Shift** key, then the **File (7)** key. Press **Save** then the **Change Quick Name** key, and select one of the Quick Names for editing. Press **Enter** and enter the new name for the key. Press **Enter** again, and the new name is displayed on the Quick Name key.

When entering filenames, use the quick name keys in any order in combination with the keyboard to create measurement filenames.

Recall Files

The recall menu enables you to view all of the Measurement and Setup files in the internal memory and in an external USB flash drive.

You can sort the recall menu by name, date, or type. You can also choose to view only measurement files or setup files by pressing **File Type** on the Recall dialog box and selecting the file type that you want to view.

Recall a Measurement

From the **File** menu, press the **Recall Measurement** soft key (submenu key), select the measurement with the touchscreen, rotary knob, or the **Up/Down** arrow keys, and then press **Enter**.

Recall a Setup

Press the **Recall** soft key. Confirm that the file type is **Setup** or **All**. Select the setup file (.stp) with the touchscreen, rotary knob, or the **Up/Down** arrow keys, and then press **Enter**.

Recall Dialog Box

The Recall dialog box ([Figure 4-2](#)) opens previously saved measurements and setups. Refer to the [“Recall Menu” on page 4-12](#) for additional information.

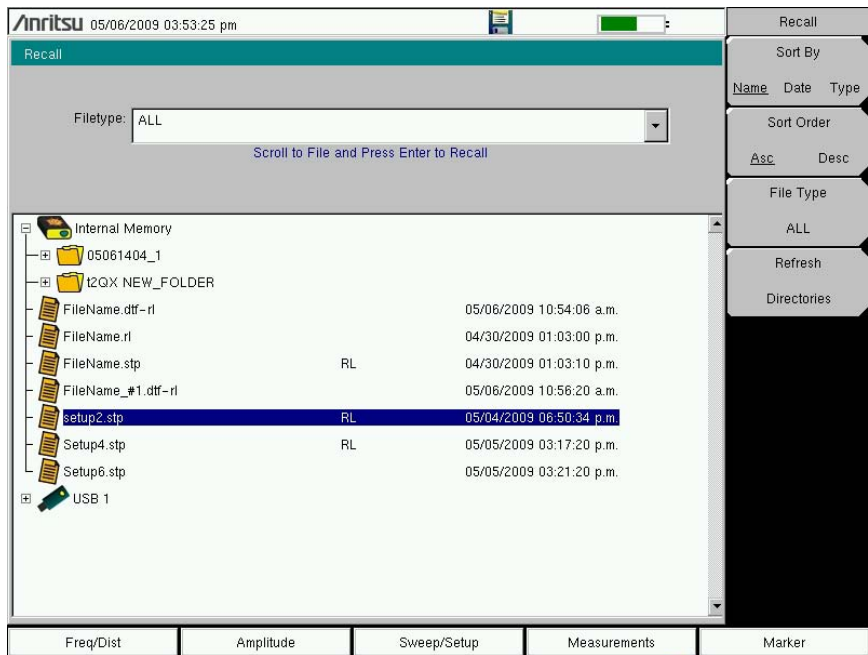


Figure 4-2. Recall Dialog Box

Copy Files

The steps below describe copying a file from internal memory to an external flash drive. Select the files to copy in the top window and the location for the files (to be copied) in the bottom window (Figure 4-3). Refer to the “Copy Menu” on page 4-13 for additional information.

1. Insert a USB drive into either USB Type A port of the VNA Master.
2. From the **File** main menu, press the **Copy** soft key. The Copy menu and Copy dialog box are displayed.
3. Select the files that are to be copied. To select multiple files, highlight the first file, then press the **Select** or **De-Select** key to keep the file selected. The selected file is outlined in blue. Repeat with all the files that are to be copied. To display files in a folder, select the folder and press the **Enter** key.
4. Press the **Scroll** key and highlight the USB drive in the lower window using the touch screen or the **Up/Down** arrow keys. The **Scroll** soft key toggles between source and destination, **Src** (top window) and **Dst** (bottom window).
5. Press the **Copy** key to copy the files to the flash drive.

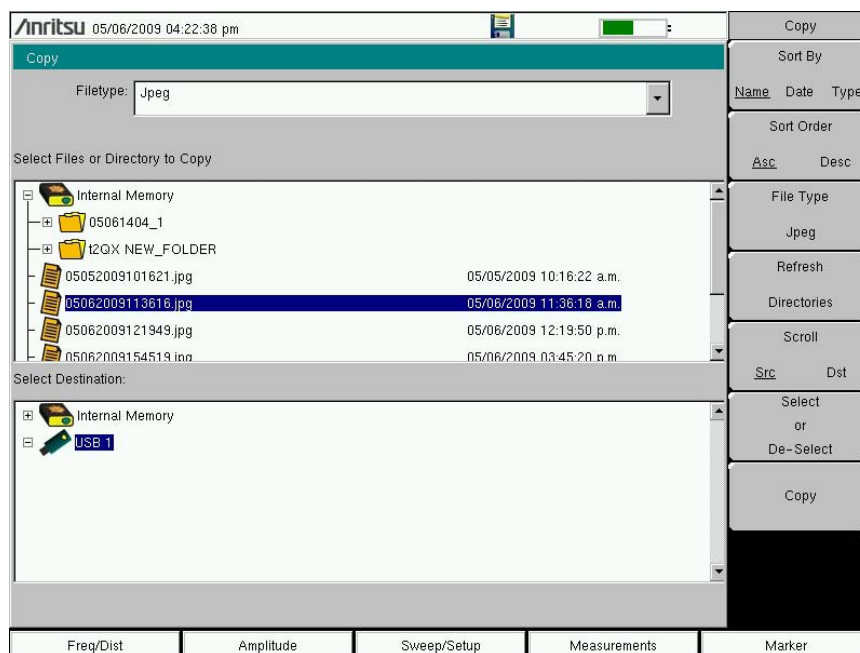


Figure 4-3. Copy Dialog Box

File Management

Delete Files

Press the **Delete** soft key (submenu key). Highlight the file to be deleted with the touchscreen or the **Up/Down** arrow keys. Press the **Select** or **De-Select** key. Selected files are outlined in blue. Press the **Delete** key and then press **Enter** to delete the selected file.

Delete Dialog Box

Press the **Delete** soft key to open the **Delete** dialog box (Figure 4-4). The menus allow sorting by file type, name, and saved date. Refer to the “Delete Menu” on page 4-14 for additional information.

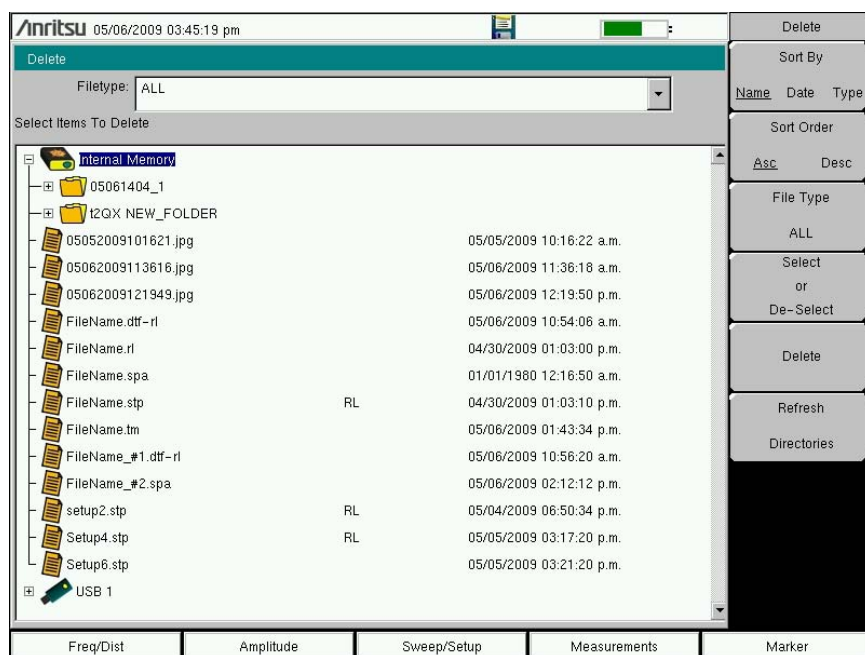


Figure 4-4. Delete Dialog Box

4-4 File Menu Overview

Open this menu by pressing the **Shift** key, then the **File (7)** key.

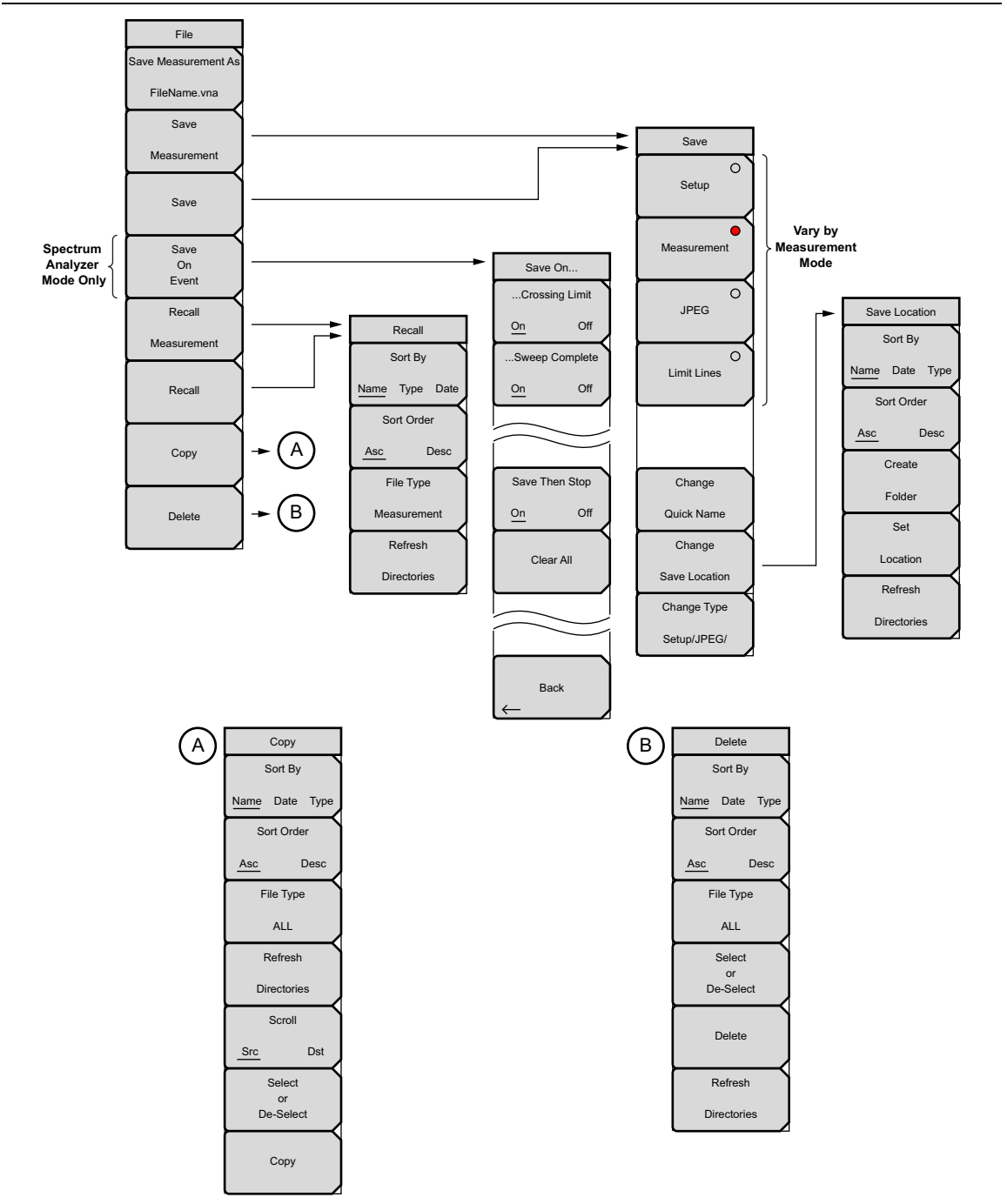


Figure 4-5. File Menu

4-5 File Menu

Key Sequence: **File**

File	Save Measurement As: Press this soft key (submenu key) to save the current setup with a user defined filename. The default filename is changed using the Save menu. To change the default file name, type in a new file with the touch screen keyboard and press Enter . After a few seconds, the screen returns to File menu. Press the Save Measurement As key again and the new file name is used.
Save Measurement As	
FileName.vna	
Save	Save Measurement: Press this soft key to display the "Save Menu" on page 4-9 and the touch screen keyboard. Measurements can be saved to internal memory or to a USB flash drive. The saved measurement can be named by using the touch screen keyboard. By default, measurements are saved to internal memory in a directory named /user. The save destination is set with the "Save Location Menu" on page 4-10 .
Measurement	
Save	
Save On Event	Save: Press this soft key to display the "Save Menu" on page 4-9 and the touch screen keyboard. Measurements can be saved to internal memory or to a USB flash drive. The saved setup, measurement, or JPEG file can be named by using the touch screen keyboard. By default, measurements are saved to internal memory in a directory named /user. The save destination is set with the "Save Location Menu" on page 4-10 .
Recall	
Measurement	
Recall	Save on Event: Press this soft key to display the "Save On Event Menu" on page 4-11 . This soft key is displayed only in Spectrum Analyzer and Interference Analyzer modes.
Copy	Recall Measurement: Press this soft key to display the "Recall Menu" on page 4-12 . This menu is for recalling measurements from internal memory or from a USB flash drive.
Delete	Recall: Press this soft key to display the "Recall Menu" on page 4-12 . This menu is for recalling measurement or setup data from internal memory or from a USB flash drive.
	Copy: Press this soft key to display the "Copy Menu" on page 4-13 . The Copy menu is for copying files or folders from internal memory or a USB flash drive.
	Delete: Press this soft key to display the "Delete Menu" on page 4-14 and a selection box that shows the setup and measurement names and the type, date, and time that the information was saved. Use the rotary knob or the Up/Down arrow keys to highlight the file that is to be deleted and press the Delete soft key, then press Enter . Press the Esc key to cancel the operation. Note that deleted files cannot be recovered.

Figure 4-6. File Menu

Save Menu

The top keys in the Save menu display the available file-type save options based on the current measurement mode.

Key Sequence: **File** > Save

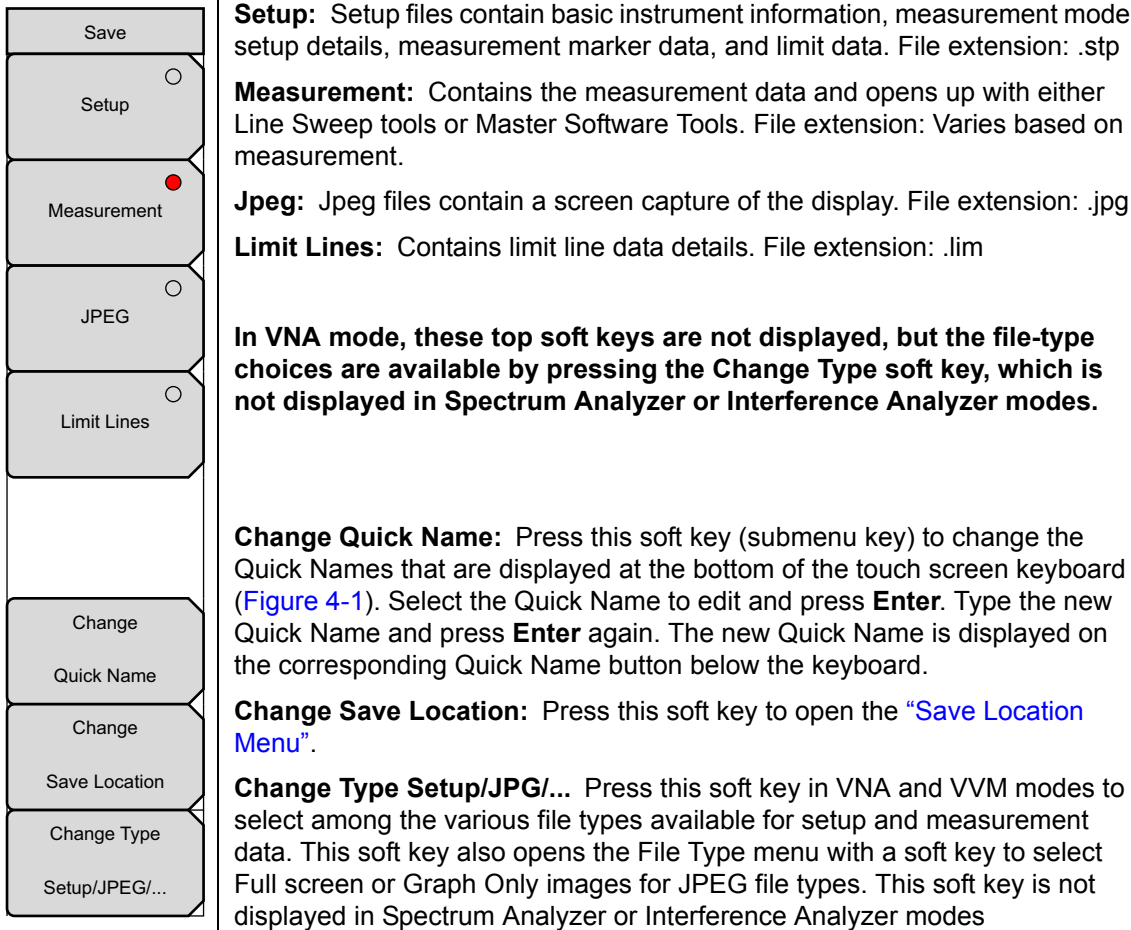


Figure 4-7. Save Menu

Save Location Menu

This menu and dialog box are used to create folders and to select the location where the VNA Master saves the current file. Select folders or drives with the **Up/Down** keys, the rotary knob, or the touch screen.

Note Only folders (not files) are visible in the Save Location dialog box. To view files, use the ["Recall Menu" on page 4-12](#).

Key Sequence: **File** > **Save** > **Change Save Location**

Save Location	
Sort By	Sort By
Name Date Type	Name Date type: Press this soft key (submenu key) to sort the folders by Name, Type, or Date.
Sort Order	Sort Order
Asc Desc	Asc Desc: Press this soft key to display the folder names in ascending or descending order.
Create	Create Folder: Press this soft key to create a new folder in the highlighted location or folder. Name the new folder in the create directory dialog box.
Folder	
Set	Set Location: Press this soft key to set the current location for saving files and then return to the "Save Menu" on page 4-9 .
Location	
Refresh	Refresh Directories: Press this soft key to update the display.
Directories	

Figure 4-8. Save Location Menu

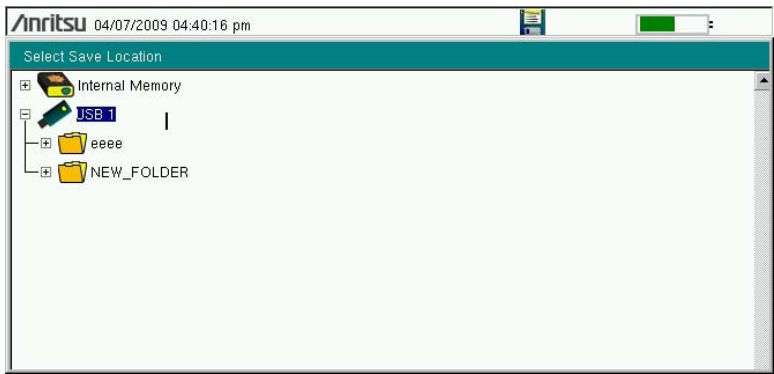


Figure 4-9. Select Save Location Dialog Box

Save On Event Menu

In Spectrum Analyzer and Interference Analyzer modes, this menu is used to auto save measurements to internal memory after a set events occur.

Key Sequence: **File** > Save On Event

Save On...

...Crossing Limit

On Off

...Sweep Complete

On Off

Save Then Stop

On Off

Clear All

Back

...Crossing Limit
On Off: Toggling this soft key (submenu key) to On sets the VNA Master to save the measurement to internal memory when the measurement has crossed a defined limit line that has been created with the **Limit** menu.

...Sweep Complete
On Off: Toggling this soft key to On sets the VNA Master to save the measurement to internal memory after the current sweep is complete. If Save Then Stop is toggled Off, then a measurement is saved after every sweep.

Save Then Stop
On Off: Toggling this key to On sets the VNA Master to stop the sweep after a measurement is saved. With this key Off and Sweep Complete On, a measurement is saved after every sweep.

Clear All: Press this key to turn Off all three save-on-event keys:
 Crossing Limit
 Sweep Complete
 Save Then Stop

Back: Press this key to return to the [“File Menu” on page 4-8](#).

Figure 4-10. Save On Menu

Recall Menu

This menu and its dialog box are used to select the location from which the VNA Master recalls a file. Select folders or drives with the **Up/Down** arrow keys, the rotary knob, or the touch screen.

Key Sequence: **File** > Recall

Recall

Sort By

Name Date Type

Sort Order

Asc Desc

File Type

ALL

Refresh

Directories

Sort By
Name Date Type: Press this soft key (submenu key) to sort files and folders by the file name, by the type of file, or by the date that the file or folder was saved.

Sort Order
Asc Desc: Displays the folder or file in ascending or descending order based on the selection in the Sort By key.

File Type: Press this soft key to select the type of file to be viewed. The file type can be changed with the **Up/Down** arrow keys, the rotary knob, or the touch screen. Press **Enter** to make the selection. Refer to [Section 4-2 “File Types”](#) for file type descriptions.

Refresh Directories: Press this key to update the display.

Figure 4-11. Recall Menu

Copy Menu

This menu and dialog box are used to copy folders and files. Select folders or files with the **Up/Down** arrow keys, the rotary knob, or the touch screen. [Figure 4-3 on page 4-5](#) shows the Copy dialog box with two JPEG images and one folder (including the folder contents) selected and ready to be copied to the USB flash drive. Highlight a folder and press **Enter** to view the contents.

Key Sequence: **File** > **Copy**

Copy

Sort By

Name

Date

Type

Sort Order

Asc

Desc

File Type

ALL

Refresh

Directories

Scroll

Src

Dst

Select

or

De-Select

Copy

Sort By
Name Type Date: Press this soft key (submenu key) to sort file and folder lists by name, by type of file, or by the date that a file was saved.

Sort Order
Asc Desc: Press this soft key to display the folders or files in ascending or descending order based on the selection in the Sort By key.

File Type: Press this soft key to select the type of files to view for copying. The file type can be changed with the **Up/Down** arrow keys, the rotary knob, or the touch screen. Press **Enter** to make the selection. Refer to [Section 4-2 “File Types”](#) for file type descriptions.

Refresh Directories: Press this soft key to update the display.

Scroll
Src Dst: Press this soft key to use the scroll function in the Source Folder (Src or top panel) or in the Destination Folder (Dst or bottom panel). Refer to [Figure 4-3](#).

Select or De-Select: Press this soft key to select or deselect the files or folders to be copied. When selected, a file or folder is outlined in blue. Refer to [Figure 4-3](#).

Copy: Press this soft key to copy the files or folders that are selected in the top window to the destination that is selected in the bottom window. A dialog box indicates when the copying is complete. If a file with the same name exists in the destination folder, then a warning box is displayed to allow file overwrite or cancel.

Figure 4-12. Copy Menu

Delete Menu

This menu and dialog box are used to delete folders and files. Select folders or files with the **Up/Down** arrow keys, the rotary knob, or the touch screen.

Key Sequence: **File** > **Delete**

Delete	
Sort By	Sort By Name Date Type: Press this soft key (submenu key) to sort files and folders by name, by the type of file, or by the date that the file or folder was saved.
Name Date Type	
Sort Order	
Asc Desc	Sort Order Asc Desc: Press this soft key to display the folders or files in ascending or descending order based on the selection in the Sort By key.
File Type	File Type: Press this soft key to select the type of file to be deleted. The file type can be changed with the Up/Down arrow keys, the rotary knob, or the touch screen. Press Enter to make the selection. Refer to Section 4-2 "File Types" for file type descriptions.
ALL	
Select or De-Select	Select or De-Select: Press this soft key to select or deselect the files or folders to be deleted. When selected, a file or folder is outlined in blue.
Delete	Delete: Press this soft key to open the Delete dialog box. Press Enter to delete the selected item, or press Esc to Cancel.
Refresh	Refresh Directories: Press this soft key to update the display.
Directories	

Figure 4-13. Delete Menu

Chapter 5 — System Operations

5-1 Introduction

This chapter describes the VNA Master system operations.

- [“System Menu Group Overview” on page 5-2](#)
- [“System Menu” on page 5-3](#)
- [“Preset Menu” on page 5-11](#)
- [“Power On Self Test” on page 5-12](#)
- [“Updating the VNA Master Firmware” on page 5-12](#)

The other menus (Sweep, Measure, Trace, and Limit) are described in the Measurement Guides that are listed in [Appendix A](#).

5-2 System Menu Group Overview

To access the functions under the System menu, press the **Shift** key, then the **System (8)** key. Menu maps typically display all possible submenu keys, although some keys are displayed on the instruments only under special circumstances (refer to menu descriptions on the following pages).

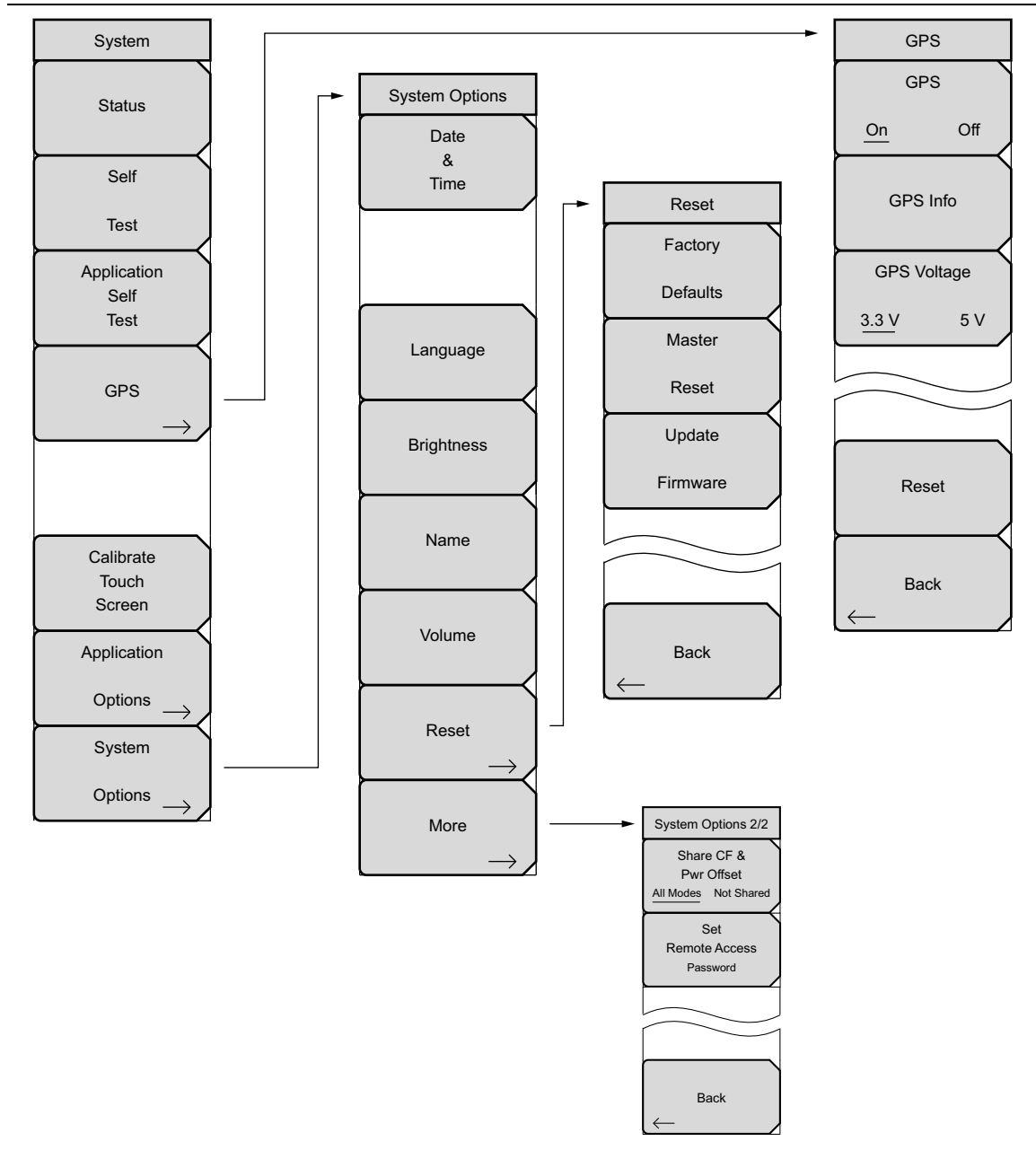


Figure 5-1. System Menu Map

5-3 System Menu

Key Sequence: **Shift, System** (8)

System	Status: Press this submenu key to display the current system status, including the operating system and firmware versions, temperatures, and other details such as current battery information. Press Esc or Enter to return to normal operation.
Status	
Self	Self Test: Press this submenu key to run a series of tests that are related to the performance of the motherboard hardware. Press the Esc key to abort, or press the Enter key to continue. The display lists a summary of those tests that have passed. If any test fails, then all of the performed tests are listed with Pass/Fail notification.
Test	
Application Self Test	If the Self Test fails when the battery is fully charged and the instrument is within the specified operating temperature, then contact your Anritsu Service Center and report the test results. Press Esc or Enter to return to normal operation.
GPS →	Application Self Test: Press this submenu key to run a series of tests that are related to the performance of the instrument hardware and that are specific to the current instrument application. Press the Esc key to abort, or press the Enter key to continue. The display lists a summary of those tests that have passed. If any test fails, then all of the performed tests are listed with Pass/Fail notification. If any test fails, then contact your Anritsu Service Center and report the test results.
Calibrate Touch Screen	
Application	GPS: Press this submenu key to open the GSP Menu. Refer to Chapter 6, “GPS (Option 31)” for additional information.
Options →	Application Options: Submenu keys are specific to each measurement mode: “ Application Options Menu (VNA Mode) ” on page 5-6 “ Application Options Menu (SPA Mode) ” on page 5-7.
System	
Options →	System Options: Press this submenu key to open the “ System Options Menu ” on page 5-4.

Figure 5-2. System Menu

System Options Menu

Key Sequence: **Shift, System (8)** > System Options

System Options	Date & Time: Press this submenu key to display a dialog box for setting the current date and time. Use the submenu keys or the Left/Right arrow keys to select the field to be modified. Use the keypad, the Up/Down arrow keys, or the rotary knob to select the date and time. Press Enter to accept the changes, or press the Esc key to return to normal operation without changing anything.
Date & Time	
Ethernet Config	Ethernet Config: Press this submenu key to display the Ethernet submenu and to open the Ethernet Editor dialog box to set the IP address of the instrument. For details, refer to section "Ethernet Configuration" on page F-1 in Appendix F, "LAN and DHCP" .
Language	Language: Press this submenu key to open a list box and select a built-in language for the VNA Master displays. The languages that are currently available are: English, French, German, Spanish, Japanese, Chinese, Korean, and Italian. In addition, a custom language may be selected if it has been defined by using Master Software Tools and loaded into the VNA Master. Two custom languages may be loaded into the instrument via Master Software Tools. If a mode does not have language translations available, then English is the default language. Press Enter to accept the change, or press the Esc key to return to normal operation without changes.
Display →	In addition, any existing language (except English) may be edited for a better local translation.
Name	Note: A Factory Default reset (Esc+On) will overwrite any custom settings within the VNA Master and will require that you reload the custom language files via Master Software Tools.
Volume	Display: The Display submenu key opens the "Display Settings Menu" on page 5-9 allowing brightness control and the selection of the default color display, black & white display, night vision display, or a high contrast display.
Reset →	Name: Press this submenu key to open a dialog box to name the instrument. The VNA Master can be named by using the text entry controls as described in section "Text Entry" on page 2-20 . Press Enter to save the name.
More →	Volume: Press this submenu key to set the speaker volume. The current volume setting is displayed on the screen. Use the keypad, the Up/Down arrow keys, or the rotary knob to change the volume, and press the Enter key to accept the change.
	Reset: Press this submenu key to open the "Reset Menu" on page 5-10 .
	More: Press this submenu key to open the "System Options 2/2 Menu" on page 5-5 .

Figure 5-3. System Options Menu

System Options 2/2 Menu

Key Sequence: **Shift, System (8)** > System Options > More

System Options 2/2

Share CF & Pwr Offset
All Modes Not Shared

Set Remote Access Password

Back

Share CF & Pwr Offset
All Modes Not Shared: Press this submenu key to toggle the setting to All Modes or to Not Shared. Select All Modes to have the current center frequency setting and power offset setting carried over when changing measurement modes. This function is not applicable to measurements that do not have a center frequency or power offset setting or to measurements in which the current center frequency or power offset setting is outside the range of the new measurement.

Note: This key is used only for spectrum analysis.

Set Remote Access Password: Press this submenu key to open the Password text box (Figure 5-5) and Text Entry menu. Type in the desired password. Upper case and lower case letters and the symbols - _ + . are the allowed password characters. Press **Enter** to save or **Esc** to cancel.

Back: Press this submenu key to return to the “System Options Menu” on page 5-4.

Figure 5-4. System Options Menu 2/2)

Remote Access Password

Warning

Do not use SCPI commands with this feature.

This function is valid only with Master Software Tools (MST) v2.21.1 or later. After setting the password, reboot the instrument (normal power **OFF** then **ON**) to provide remote access security. Only one user then has access at any one time.

The password is first set into the instrument, then used in MST. When prompted in MST, enter the password into the password text box. The password text box shown in Figure 5-5 may differ from the text box that is displayed on your instrument.

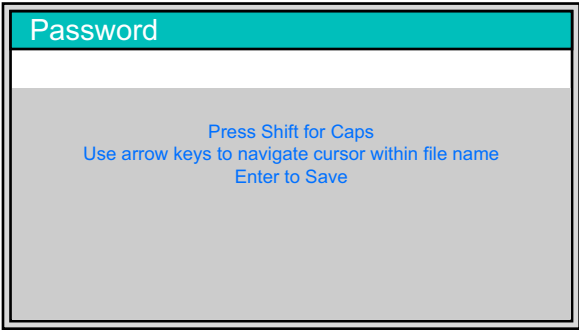


Figure 5-5. Remote Access Password Text Box

The password can be removed or reset by a Master Reset, by a Factory Default reset, or by a firmware update (which includes a restart).

5-4 Application Options Menu (VNA Mode)

Key Sequence: **Shift, System (8)** > Application Options

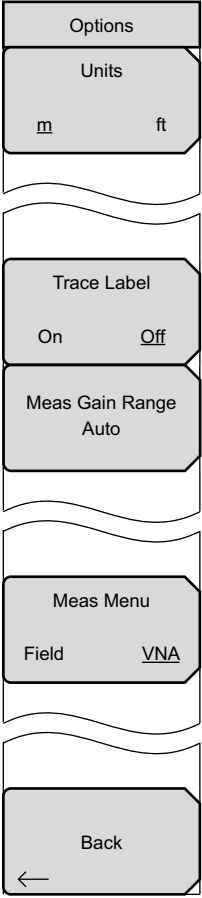
	<p>Standard VNA menus selected.</p> <p>Units m ft: Press this soft key (submenu key) to toggle the units setting to metric (meters, or m) or to U.S. (feet, or ft). Press Enter to accept the changes, or press the Esc key to return to normal operation without changing the setting.</p> <p>Trace Label On Off: Press this soft key (submenu key) to toggle the trace labels On or Off.</p> <p>Meas Gain Range: Press this soft key to open the “Mode (Meas Gain Range) Menu (VNA Mode)”. Then select Auto or Fixed.</p> <p>Trace Label On Off: Press this submenu key to toggle between Field (a simplified subset of the standard VNA menu structure) and VNA (standard menu structure).</p> <p>Back: Press this soft key to return to the “System Menu” on page 5-3.</p>
---	--

Figure 5-6. Application Options Menu (VNA Mode) (Sheet 1 of 2)

Figure 5-6. Application Options Menu (VNA Mode) (Sheet 2 of 2)

Key Sequence: **Shift, System (8)** > System Options > Application Options

Figure 5-7. Application Options Menu (SPA Mode)

5-6 Mode (Meas Gain Range) Menu (VNA Mode)

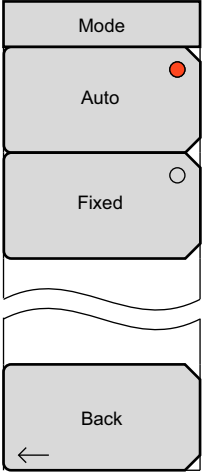
	<p>Auto: Press this soft key to set the Measurement Gain Range Mode to Auto. In this mode, the instrument adjusts the gain automatically to provide the best overall system performance (dynamic range and high level noise).</p> <p>Fixed: Press this soft key to set the Measurement Gain Range Mode to Fixed. In this mode, the gain of the instrument is always set to the low gain setting. For most applications, Auto mode is recommended. For certain types of filter measurements (mostly in the range less than 500 MHz), the instrument may toggle between low gain and high gain modes as the signal level rises from the noise to the pass band of the filter, resulting in extra ripple. Setting the Gain Range to fixed may address that problem.</p> <p>Back: Press this soft key to return to the "Application Options Menu (VNA Mode)".</p>
--	--

Figure 5-8. VNA Mode (Measurement Gain Range) Menu

5-7 Display Settings Menu

Key Sequence: **Shift, System (8)** > System Options > Display

Display Settings	
Brightness	Brightness: Press this soft key to adjust the brightness of the display to optimize viewing under a wide variety of lighting conditions. Use the keypad, the Up/Down arrow keys or the rotary knob to select a brightness level from 1 to 9, with 9 being the brightest. Press Enter to accept the change.
Default Colors	Default Colors: Press this soft key to set the display colors to their factory default condition. Use for normal viewing.
Black & White	Black & White: Press this soft key to set the display colors to black and white. Use for printing and viewing in broad daylight conditions.
Night Vision	Night Vision: Press this soft key to set the display to a red-tinted color, which is optimized for night-time viewing.
High Contrast	High Contrast: Press this soft key to increase the contrast of the default display colors. Used for other challenging viewing conditions.
Invert Black & White	Invert Black & White: Press this soft key to invert the black and white colors to produce a white background and black graticule lines with colored traces. Use for viewing in broad daylight conditions and for color printing.
<hr/>	
Back	Back: Press this soft key to return to the “System Options Menu” on page 5-4.

Figure 5-9. Display Settings Menu

5-8 Reset Menu

Key Sequence: **Shift, System (8)** > System Options > Reset

Reset	Factory Defaults: Press this soft key to restore the instrument to the factory default values, including language, volume, brightness setting, and user created shortcut icons on the Menu screen. Press the Enter key to initiate the reset, and power cycle the instrument.	
Factory Defaults		
Master Reset		Master Reset: In addition to the functions described in Factory Defaults above, all user files in the internal memory are deleted, and the original language and antenna files are restored. Press the Enter key to initiate the Master Reset and power-cycle the instrument. Press Esc to return to normal operation without resetting.
Update Firmware		Update Firmware: This soft key is used for updating the instruments's firmware. Please refer to section x-yy System Settings, Update Firmware. Refer to "Updating the VNA Master Firmware" on page 5-12 for additional information on firmware update.
Back		Back: Press this soft key to return to the "System Options Menu" on page 5-4.

Figure 5-10. Reset Menu

5-9 Preset Menu

Key Sequence: **Shift, Preset (1)**

Preset

Preset

Save

Setup

Recall

Setup

Preset: Press this soft key to reset the instrument to the default starting conditions.

Save Setup: Press this soft key to open the Save dialog box ([Figure 4-1](#)) to name and save the current operating settings, allowing them to be recalled later to return the instrument to the state it was in at the time the setup was saved.

The saved setup can be named using the touch screen keyboard. Use the Caps key to select an upper case letter. Use the **Left/Right** directional arrows to move the cursor position. Press **Enter** to save the setup.

Note: Set the File type as Setup. Refer to [“Save Menu” on page 4-9](#) for details.

Recall Setup: Press this soft key to select and recall a previously stored instrument setup using the [“Recall Menu” on page 4-12](#). Use the rotary knob, the **Up/Down** arrow keys, or the touchscreen to highlight the saved setup, and press **Enter**. All current instrument settings are replaced by the stored setup information.

Figure 5-11. Preset Menu

5-10 Power On Self Test

At power on, the VNA Master runs through a series of quick checks to ensure that the system is functioning properly.

From the “System Menu”, the System Self Test (“Self Test” on page 5-3) runs a series of tests that are related to the instrument itself. The Application Self Test (“Application Self Test” on page 5-3) runs a series of tests that are related to the current operating mode of the instrument.

If the VNA Master is within the specified operating range with a charged battery, and if the self test fails, then contact your Anritsu Service Center (<http://www.anritsu.com/Contact.asp>).

To start a self test when the system is already powered up:

1. Press the **Shift** key and then the **System (8)** key.
2. Press the **Self Test** soft key (submenu key). The Self Test results are displayed.
3. Press **Esc** to continue.

5-11 Updating the VNA Master Firmware

The VNA Master is updated using a USB memory stick. Updated product information can be found on the Anritsu web site:

<http://www.anritsu.com>

1. Search for the product model number. The firmware updates are on the product page under the Library tab in the “Drivers, Software Downloads” section. Follow the instructions on the Download Page and during the installation process.
2. After the firmware is loaded, insert the USB memory device into the USB port of the instrument.
3. Press the following key sequence: **Shift > System (8) > System Options > Reset > Update Firmware**. The Load Firmware main menu key (hard key) is displayed.
4. Press the **Load Firmware** main menu key (hard key) to display the Firmware Update menu and Update Application Firmware soft key.
5. Press the Update Application Firmware soft key, and the Firmware Update dialog opens.
6. Highlight each of the save choices: **Save None**, **Save User Data**, and **Save & Restore User Data**. Read through each choice carefully and then select the desired save mode.
 - **Save None:** No attempt is made to save any user data.
 - **Save User Data:** User data is saved to the selected external media device.

Warning

If not enough memory space is available for all user data, then some data may be lost during this process.

- **Save & Restore:** User data is saved to the selected external media device. The instrument also attempts to restore the files to the instrument after the update.

Warning

If not enough memory space is available for all user data, then some data may be lost during this process.

7. Press **Enter** to begin the firmware update process. To abort the process, press **Esc**, then choose another analyzer mode or power down.
8. The Firmware Update dialog will query you to confirm the process by pressing **Enter** to continue or by pressing **Esc** to abort.
9. Press **Enter**, and the firmware update process begins, and the Firmware Update dialog displays the following message:
Updating firmware. Please Wait.
10. When complete, the instrument restarts.

Chapter 6 — GPS (Option 31)

6-1 Introduction

The VNA Master is available with a built-in GPS receiver feature (Option 31) that can provide latitude, longitude, altitude, and UTC timing information. This option also enhances the frequency reference oscillator accuracy in the Spectrum Analyzer mode (MS203xB). Within three minutes of satellite acquisition, the reference oscillator will have an accuracy of better than 50 ppb (parts per billion).

In order to acquire data from the GPS satellites, you must have line-of-sight to the satellites, or the antenna must be placed outside without any obstructions. Anritsu GPS antenna 2000-1528-R or 2000-1652-R is required.

Note

The VNA Master Technical Data Sheet provides a list of options and the measurements that require GPS (Option 31).

6-2 Activating the GPS Feature

Install the Anritsu GPS antenna onto the GPS Antenna connector on the VNA Master.

1. Press the **Shift** key, then the **System** (8) key.
2. Press the GPS soft key (submenu key).
3. Press the GPS On/Off soft key to toggle the GPS feature on or off. When GPS is first turned on, a RED GPS icon appears at the top of the display.



Figure 6-1. GPS Icon, Red

4. When the GPS receiver has tracked at least three satellites, the GPS icon changes to GREEN. Latitude and Longitude information is displayed in the white bar on top of the display. Acquiring satellites may take as long as three minutes.



Figure 6-2. GPS Icon, Green

5. Press the GPS Info soft key (submenu key) to view information about:

- Tracked Satellites
- Latitude and Longitude
- Altitude
- UTC
- Fix Available
- Almanac Complete
- Antenna and Receiver Status
- GPS Antenna Voltage and Current

Refer to [Section 6-4 “GPS Menu” on page 6-3](#) for details about the GPS Info dialog box.

6. Press the **Reset** soft key to reset the GPS.
7. The GREEN GPS icon with a RED CROSS through it, as shown below, appears when GPS satellite tracking is lost (after actively tracking 3 or more satellites). The GPS longitude and latitude are saved in the instrument memory until the VNA Master is turned off or until GPS is turned off by using the GPS On/Off key.



Figure 6-3. GPS Icon, Tracking Lost

6-3 Saving and Recalling Traces with GPS Information

Saving Traces with GPS Information

The GPS coordinates of a location can be saved along with a measurement trace. Refer to the [“Save Menu” on page 4-9](#) for more information. The current GPS coordinates are saved with the measurement traces whenever GPS is on and actively tracking satellites.

Recalling GPS Information

If the GPS coordinates were saved with a measurement, then when the measurement is recalled, the coordinates that were saved are recalled as well. Refer to the [“Recall Menu” on page 4-12](#) for more information about recalling a saved trace.

6-4 GPS Menu

Key Sequence: **Shift, System (8) > GPS**

GPS	
GPS	GPS: Press this soft key (submenu key) to turn GPS on or off.
On Off	
GPS Info	GPS Info: Press this soft key to display the current GPS information. Refer to “GPS Info” on page 6-4 .
GPS Voltage	
3.3 V 5 V	GPS Voltage: Press this soft key to set the source voltage to be either 3.3 V or 5 V depending on the GPS receiver being used. GPS antenna voltage is set to 3.3 V by default in order to prevent accidental damage to lower-voltage GPS antennas.
Reset	Reset: Press this soft key to set the number of tracked satellites to 0 and to erase any almanac data, along with saved coordinates. The process of searching for and reacquiring satellites begins again.
Back	Back: Press this soft key to return to the “System Menu” on page 5-3 .
←	

Figure 6-4. GPS Menu

GPS Info

- **Tracked Satellites**

Shows the number of tracked satellites (three are required to retrieve latitude and longitude, four are required to resolve altitude). Generally, the larger number of satellites tracked, the more accurate the information.

- **Latitude and Longitude**

Shows location in degrees, minutes, and seconds.

- **Altitude**

Shows altitude information in meters.

- **UTC**

Universal Coordinated Time.

- **Fix Available**

The cold start search sets are established to ensure that at least three satellites are acquired within the first couple of minutes. When three satellites are found, the receiver computes an initial fix (typically in less than two minutes). **Fix Not Available** means that the initial position has not been established.

- **Almanac Complete**

The system Almanac contains information about the satellites in the constellation, ionospheric data, and special system messages. In a cold start, the GPS receiver does not have any navigation data so the receiver does not have a current almanac. A complete system almanac is not required to achieve a first position fix. The availability of the almanac, however, can significantly reduce the time to first fix.

- **Antenna Status**

OK: Antenna is connected properly and antenna is working properly

Short/Open: A short or open exists between the antenna and the connection. If this message is displayed, then remove and replace the GPS antenna. If the message persists, then try another Anritsu GPS antenna (part number 2000-1528-R). If the message persists, then contact your nearest Anritsu Service Center.

- **Receiver Status**

Current status of the receiver.

- **GPS Antenna Voltage and Current**

Shows voltage and current.

Chapter 7 — Bias Tee (Option 10)

7-1 Overview

The use of this option is fully described in the Vector Network Analyzer Measurement Guide (refer to [Appendix A](#)). Some instrument-specific information is provided in this introduction to Bias Tee.

Option 10 provides a bias tee that is installed inside the instrument. The bias arm is connected to a 12 VDC to 32 VDC power source that can be turned on as needed to place the voltage on the center conductor of the instrument VNA Port 2. This supply of bias implies it is mostly useful when conducting two-port transmission measurements. This voltage can be used to provide power to block down-converters in satellite receivers and can also be used to power some tower-mounted amplifiers.

The bias can be turned on only when the instrument is in vector network analyzer mode, and when the Start Frequency is 2 MHz or greater. When bias is turned on, the bias voltage and current are displayed in the Instrument Settings Summary area at the top-left corner of the sweep window. The 12 VDC to 32 VDC power supply is designed to continuously deliver a maximum of 6 watts.

The bias tee menu can be accessed in several ways depending on how the instrument is configured:

- From the Sweep menu when in standard VNA Mode:
Key Sequence: **Sweep** > Configure Ports > Bias Tee Setup
- From the System Options menu when VNA Field menus are selected:
Key Sequence: **Shift, System (8)** > Application Options > Bias Tee Setup
- From the System Options menu when in Spectrum Analyzer mode:
Key Sequence: **Shift, System (8)** > Application Options > Bias Tee

Figure 7-1 shows how the MS20xxB can provide an internal voltage between 12 volts and 32 volts that is applied to the center conductor of Port 2. That voltage would be available at the port along with the RF signals.

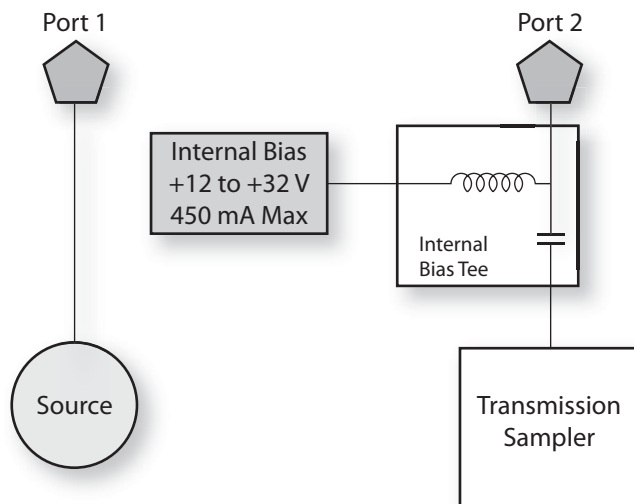


Figure 7-1. Internal Bias

Bias Tee (Option 10)

Chapter 8 — Anritsu PC Software Tools

8-1 Introduction

This chapter provides a brief overview of the available PC software tools from Anritsu. For detailed information about specific software, refer to the Anritsu web site or the program's built-in Help. Software is included with the instrument and is also available from the Anritsu web site: <http://www.anritsu.com/en-US/Services-Support/Handheld-Tools-Tool-Box.aspx>.

8-2 Anritsu Tool Box

The Anritsu Tool Box is a central location to open an Anritsu measurement, visit the Anritsu web site, or launch several Anritsu applications. To open the Anritsu Tool Box, either click on the shortcut icon on the desktop or click **Start** and navigate through the Programs folder to the Anritsu folder and select Anritsu Tool Box.

Once the Tool Box is open, move the mouse pointer over any of the application icons to view a short description of the application. The following pages describe three software programs that can be launched from the Tool Box, Line Sweep Tools, Master Software Tools (MST), and easyMap Tools™.

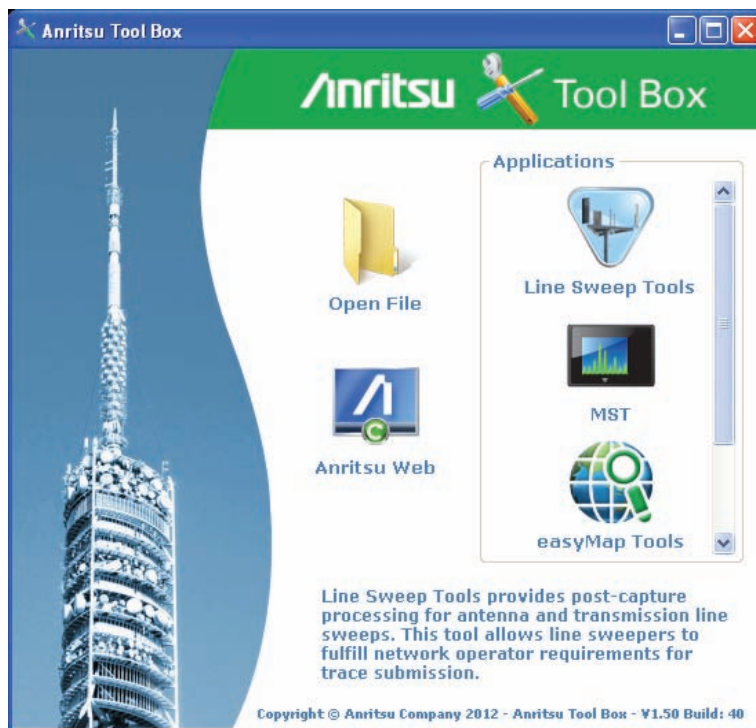


Figure 8-1. Anritsu Tool Box

The Anritsu PC Software tools do not support all of Anritsu's handheld instruments or all of their measurements. Compatibility information is provided in the program's Help.

Note Line Sweep Tools (LST) can be used for downloading and post-processing of certain VNA measurements and cable & antenna analysis sweeps.

Master Software Tools (MST) is primarily used for spectrum analysis measurements.

8-3 Line Sweep Tools

Line Sweep Tools is a program designed to increase productivity for people who work with dozens of Cable traces, Antenna traces, and Passive Intermodulation (PIM) traces every day. Line Sweep Tools will:

- Collect sweeps from Anritsu PIM and Line Sweep gear.
- Help verify that those sweeps are done properly and that the Cable, Antenna and PIM sweeps meet specifications.
- Help create reports of the findings quickly and to a professional standard.

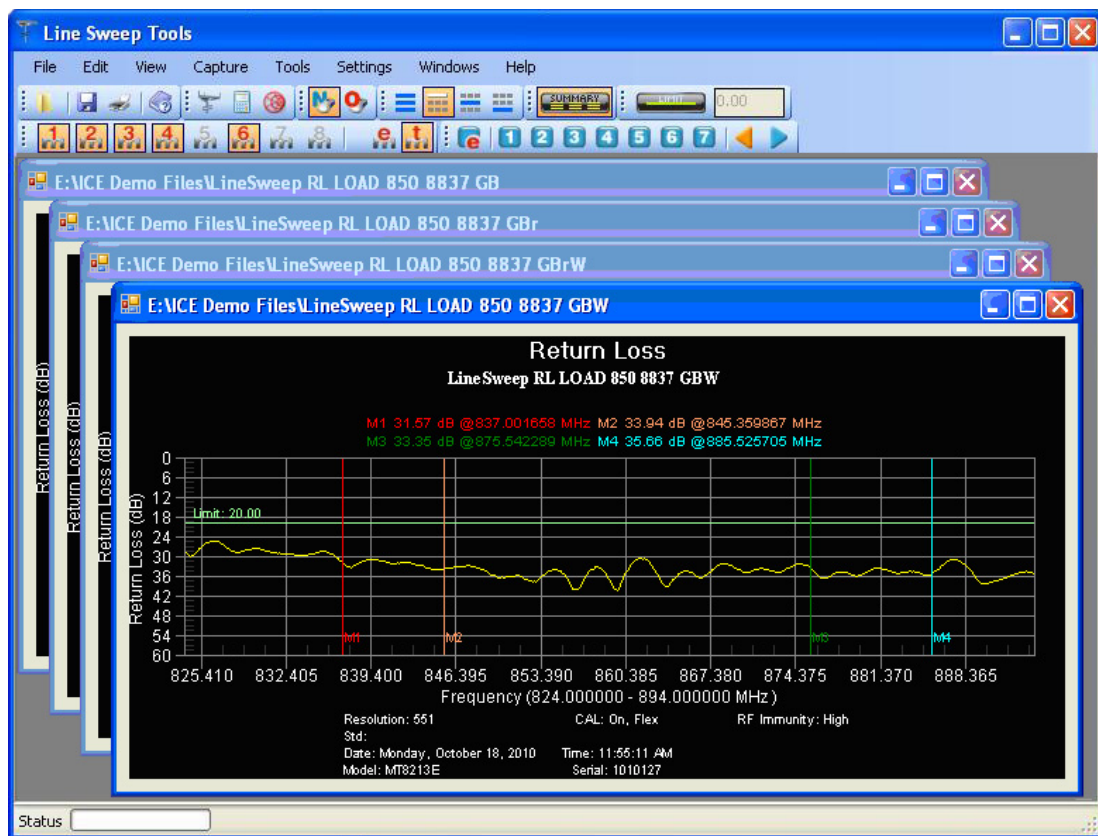


Figure 8-2. Line Sweep Tools

8-4 Master Software Tools

Anritsu Master Software Tools is a PC program for transferring and editing saved measurements, markers, and limit lines to a PC. MST is recommended for Spectrum Analyzer instruments or instruments that perform spectrum analysis measurements.

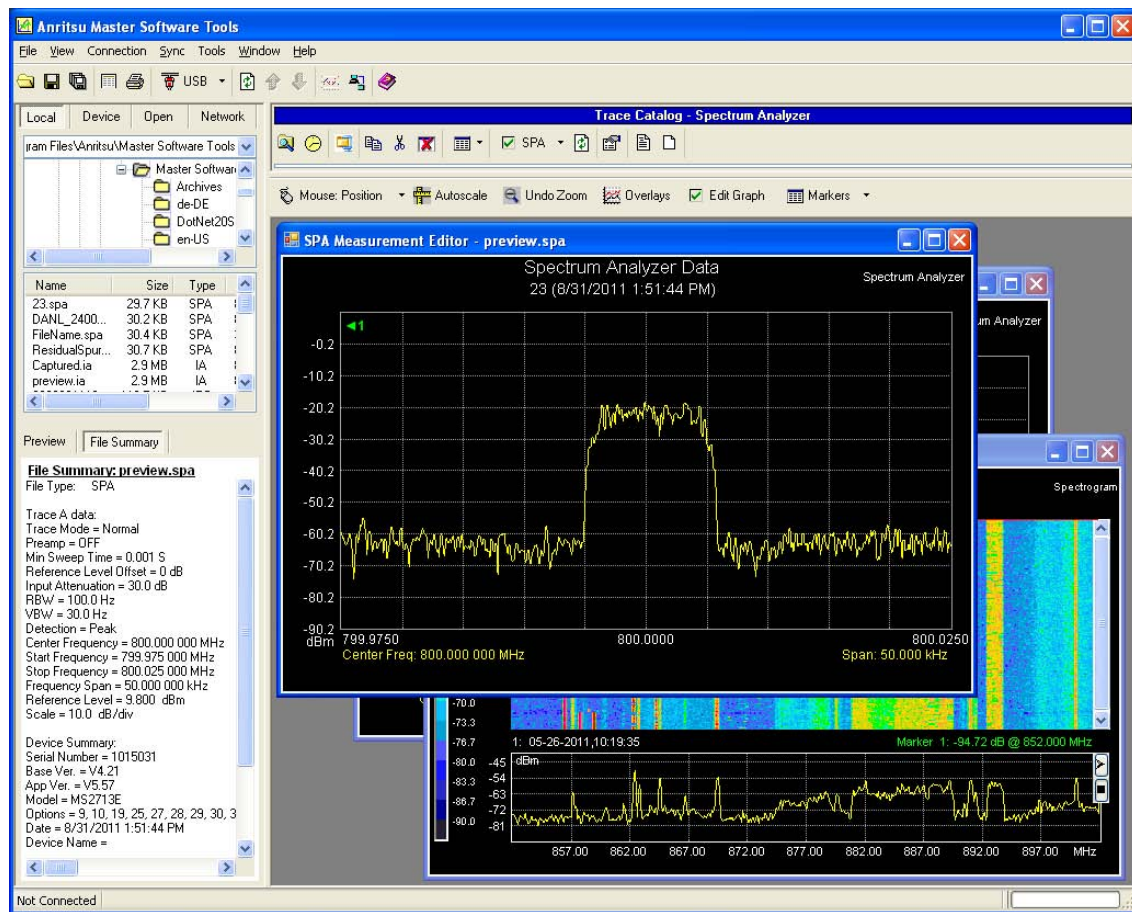


Figure 8-3. Master Software Tools

8-5 easyMap Tools

easyMap Tools creates geo-referenced maps and can also convert floor plans for use by Anritsu mapping spectrum analyzers. It can also create single panel maps (.map) for legacy instruments or pan and zoom maps (.azm) for current instruments. Mapping of both interference and coverage is available while indoors or outdoors.

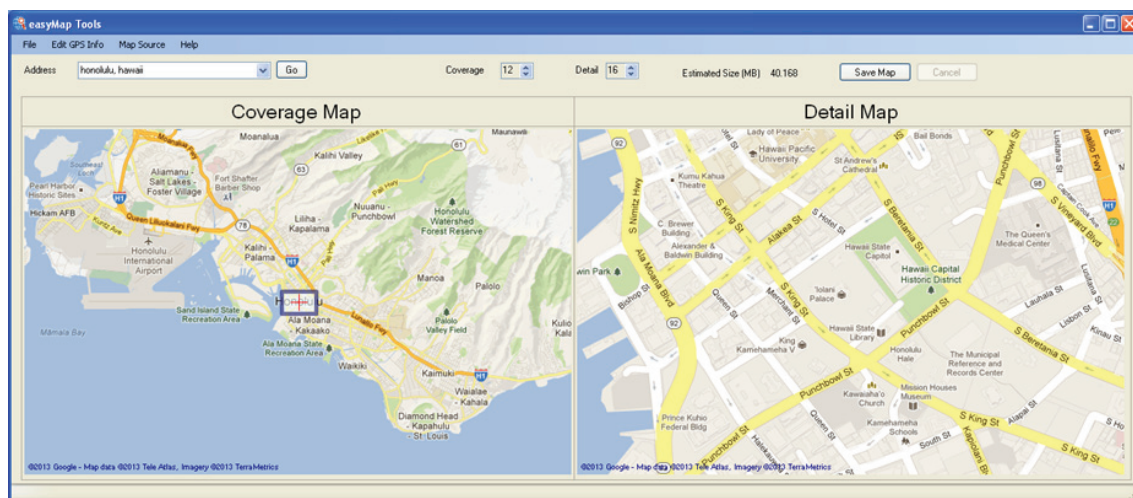


Figure 8-4. Captured Geo-referenced Map Ready for the Analyzer

Appendix A — Supplemental Documentation

A-1 Introduction

This appendix provides a list of supplemental documentation and software associated with this User Guide. The measurement guides are available as PDF files on the document disc that is provided with the instrument. Updated documents are available from the Anritsu Web site. The Web site also has links to download application notes, brochures, and online help.

Table A-1. Measurement Guides for Analyzers and Analyzer Options

VNA Master Feature (Available Option)	Document and Part Number
Vector Network Analyzer Bias-Tee (0010) Vector Voltmeter (0015) Distance Domain (0501)	Vector Network Analyzer Measurement Guide (10580-00289)
High-Accuracy Power Meter (0019)	Power Meter Measurement Guide (10580-00240)
Spectrum Analyzer Interference Analyzer (0025) Channel Scanner (0027) Coverage Mapping (0431) AM/FM/PM Analyzer (0509)	Spectrum Analyzer Measurement Guide (10580-00244)

Table A-2. VNA Master Related Documents

VNA Master Related Documents	Related Document and Part Number
Performance Specifications	VNA Master Technical Data Sheet (11410-00549)
SCPI Programming Manual	VNA Master Programming Manual (10580-00302)

A complete suite of computer software applications are available for download:

<http://www.anritsu.com/en-US/Services-Support/Handheld-Tools-Tool-Box.aspx>

Appendix B — Signal Standards

B-1 Introduction

This appendix provides a sample list of signal standards. This list can be used as a reference when making measurements with the VNA Master.

Table B-1. Signal Standards

Signal Standard	Center (MHz)	Span (MHz)	Valid Channels
AMPS / EIA 553 - Uplink	859	70	1-799, 990-1023
AMPS / EIA 553 - Downlink	859	70	1-799, 990-1023
C-450 (P) - Uplink	463.5	21	1-800
C-450 (P) - Downlink	463.5	21	1-800
C-450 (SA) - Uplink	462.5	15	1-247
C-450 (SA) - Downlink	462.5	15	1-247
CDMA US Cellular - Uplink	859	70	1-799, 990-1023
CDMA US Cellular - Downlink	859	70	1-799, 990-1023
CDMA US PCS - Uplink	1920	140	1-1199
CDMA US PCS - Downlink	1920	140	1-1199
CDMA Korea PCS - Uplink	1810	120	1-599
CDMA Korea PCS - Downlink	1810	120	1-599
CDMA Japan / ARIB - Uplink	878.5	93	1-799, 801-1039, 1041-1199
CDMA Japan / ARIB - Downlink	878.5	93	1-799, 801-1039, 1041-1199
CDMA China - 1 - Uplink	916	88	0-1000, 1329-2047
CDMA China - 1 - Downlink	916	88	0-1000, 1329-2047
CDMA China - 2 - Uplink	910	76	0-1000
CDMA China - 2 - Downlink	910	76	0-1000
cdma2000 Class 0, Korea Cellular - Uplink	859	70	1-799, 990-1023
cdma2000 Class 0, Korea Cellular - Downlink	859	70	1-799, 990-1023
cdma2000 Class 0, N.A. Cellular - Uplink	859	70	1-799, 990-1023
cdma2000 Class 0, N.A. Cellular - Downlink	859	70	1-799, 990-1023
cdma2000 Class 1, N.A. PCS - Uplink	1920	140	0-1199
cdma2000 Class 1, N.A. PCS - Downlink	1920	140	0-1199
cdma2000 Class 2, (TACS Band) - Uplink	916	88	0-1100, 1329-2047
cdma2000 Class 2, (TACS Band) - Downlink	916	88	0-1100, 1329-2047
cdma2000 Class 3, (JTACS Band) - Uplink	878.5	93	1-799, 801-1039, 1041-1199
cdma2000 Class 3, (JTACS Band) - Downlink	878.5	93	1-799, 801-1039, 1041-1199
cdma2000 Class 4, Korea PCS - Uplink	1810	120	0-599
cdma2000 Class 4, Korea PCS - Downlink	1810	120	0-599
cdma2000 Class 5, (NMT-450-20 kHz) - Uplink	472.5	43	1039-1473, 1792-2016

Signal Standards

Table B-1. Signal Standards

Signal Standard	Center (MHz)	Span (MHz)	Valid Channels
cdma2000 Class 5, (NMT-450-20 kHz) - Downlink	472.5	43	1039-1473, 1792-2016
cdma2000 Class 5, (NMT-450-25 kHz) - Uplink	439.5	57	1-300, 539-871
cdma2000 Class 5, (NMT-450-25 kHz) - Downlink	439.5	57	1-300, 539-871
cdma2000 Class 6, IMT-2000 - Uplink	2045	250	0-1199
cdma2000 Class 6, IMT-2000 - Downlink	2045	250	0-1199
cdma2000 Class 7, N.A. 700 MHz Cellular - Uplink	770	48	0-359
cdma2000 Class 7, N.A. 700 MHz Cellular - Downlink	770	48	0-359
ETACS - Uplink	916	88	0-1000, 1329-2047
ETACS - Downlink	916	88	0-1000, 1329-2047
GSM 900 - Uplink	897.4	40	1-124, 975-1023
GSM 900 - Downlink	942.4	40	1-124, 975-1023
GSM 1800 - Uplink	1747.4	80	512-885
GSM 1800 - Downlink	1842.4	80	512-885
GSM 1900 - Uplink	1879.8	80	512-810
GSM 1900 - Downlink	1959.8	80	512-810
JTACS - Uplink	878.5	93	0-1198 (even numbers only)
JTACS - Downlink	878.5	93	0-1198 (even numbers only)
MATS-E - Uplink	925	70	1-1000
MATS-E - Downlink	925	70	1-1000
N-AMPS / IS-88L - Uplink	859	70	1-799, 990-1023
N-AMPS / IS-88L - Downlink	859	70	1-799, 990-1023
N-AMPS / IS-88M - Uplink	859	70	1-799, 990-1023
N-AMPS / IS-88M - Downlink	859	70	1-799, 990-1023
N-AMPS / IS-88U - Uplink	897.5	147	1-799, 990-1023
N-AMPS / IS-88U - Downlink	897.5	147	1-799, 990-1023
NADC IS136 Cellular - Uplink	859	70	1-799, 990-1023
NADC IS136 Cellular - Downlink	859	70	1-799, 990-1023
NADC IS136 PCS - Uplink	1920	140	1-1199
NADC IS136 PCS - Downlink	1920	140	1-1199
NMT-411-25 kHz - Uplink	420.5	19	539-871
NMT-411-25 kHz - Downlink	420.5	19	539-871
NMT-450-20 kHz - Uplink	460.5	19	1039-1473
NMT-450-20 kHz - Downlink	460.5	19	1039-1473
NMT-450-25 kHz - Uplink	459	18	1-300

Signal Standards**Table B-1.** Signal Standards

Signal Standard	Center (MHz)	Span (MHz)	Valid Channels
NMT-450-25 kHz - Downlink	459	18	1-300
NMT-470-20 kHz - Uplink	486.5	15	1972-2016
NMT-470-20 kHz - Downlink	486.5	15	1972-2016
NMT-900 - Uplink	925	70	1-1000
NMT-900 - Downlink	925	70	1-1000
NMT-900 (Offset) - Uplink	925	70	1025-2023
NMT-900 (Offset) - Downlink	925	70	1025-2023
NTACS - Uplink	878.5	93	1-1199
NTACS - Downlink	878.5	93	1-1199
PDC 800 Analog - Uplink	891.5	97	0-1680
PDC 800 Analog - Downlink	891.5	97	0-1680
PDC 1500 (JDC) - Uplink	1513	72	0-960
PDC 1500 (JDC) - Downlink	1513	72	0-960
PHS - Uplink	1906.5	23	1-77
PHS - Downlink	1906.5	23	1-77
SMR 800 - 12.5 kHz - Uplink	836	60	1-1199
SMR 800 - 12.5 kHz - Downlink	836	60	1-1199
SMR 800 - 25 kHz - Uplink	836	60	1-600
SMR 800 - 25 kHz - Downlink	836	60	1-600
SMR 1500 - Uplink	1483	60	1-479
SMR 1500 - Downlink	1483	60	1-479
TACS - Uplink	925	70	1-1000
TACS - Downlink	925	70	1-1000
UMTS/WCDMA - Uplink	1920	70	9600-9900
UMTS/WCDMA - Downlink	2110	70	10550-10850
UMTS/Region 2 - Uplink	1850	70	9250-9550
UMTS/Region 2 - Downlink	1930	70	9650-9950
802.11a	5170	84	34-161 (not all valid)
802.11b	2442	84	1-14
802.11 DS	2448	72	1-14
802.11 FH	2448.5	93	2-95
802.11g	2442	84	1-14

Appendix C — Error Messages

C-1 Introduction

This appendix provides a list of information and error messages that could be displayed on the VNA Master. If any error condition persists, then contact your local Anritsu Service Center.

C-2 Reset Options

You can reset your VNA Master to Factory Defaults or use a Master Reset to return to the FULL Factory Default condition from the menu system or from the Off condition.

Reset Via Instrument Menus

From the VNA Master menu system, press the **Shift** key, then the **System (8)** key to open the System menu. Then press the System Options soft key to open the System Options menu. Then press the Reset soft key to open the Reset menu (refer to section [“Reset Menu” on page 5-10](#)). From the Reset menu, press either the Factory Defaults soft key or the Master Reset soft key.

Reset from OFF Condition

You can also reset the VNA Master by turning it Off and then restarting under one of the following conditions:

Factory Defaults Reset:

Hold the **Esc** button while pressing the **On/Off** button. Continue holding the **Esc** button until the Anritsu splash screen appears. You can then release the button. The VNA Master starts up with many Factory Default settings (refer to section [“Factory Defaults” on page 5-10](#)). Throughout this appendix, this sequence is abbreviated as Factory Defaults (**Esc+On**).

Master Reset:

Hold the **8** key in the number keypad (also referred to as the **System (8)** key) while pressing the **On/Off** button. Continue holding the **8** key until the Anritsu splash screen appears. You can then release the key. The VNA Master starts up in FULL Factory Default condition (refer to section [“Master Reset” on page 5-10](#)). Throughout this appendix, this sequence is abbreviated as Master Reset (**System+On**).

C-3 Self Test or Application Self Test Error Messages

Self Test

To run self test, press **Shift** and **System (8)** and then Self Test. Refer to the results window in [Figure C-1](#), which summarizes the status of several key functions in the instrument that are common to all applications (note that your instrument display may differ from this image). If any subtest shows FAILED, then check that the battery level is adequate for operation, or check that the temperature is within acceptable limits. Reset to factory defaults with either Factory Defaults (**Esc+On**), or Master Reset (**System+On**).

Caution

Use of Master Reset (**System + On**), will erase all user saved setups and measurement traces and will return the VNA Master to a full Factory Default condition. If the error persists, then contact your Anritsu Service Center.

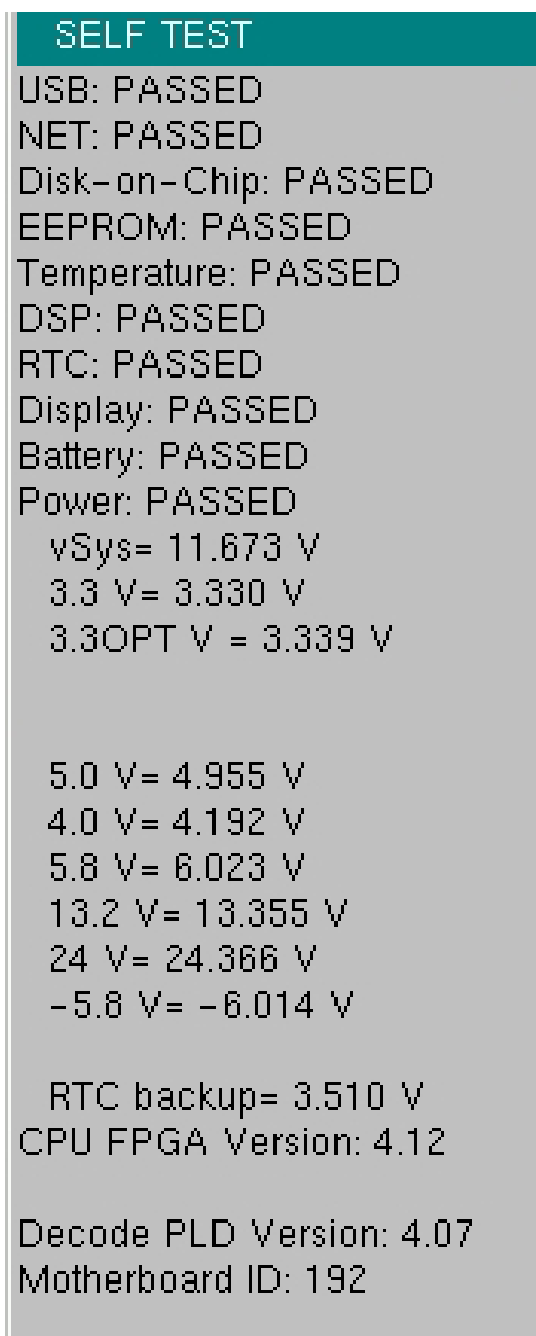


Figure C-1. Self Test Results Window (Vector Network Analyzer mode)

Application Self Test Results Window — VNA

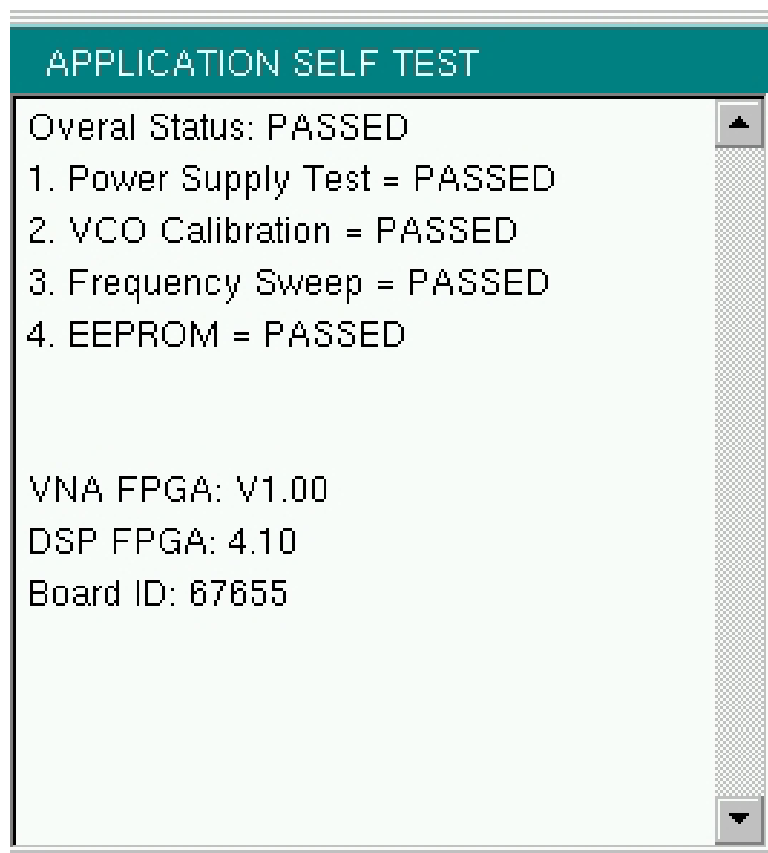


Figure C-2. Application Self Test Results Window (Vector Network Analyzer mode)

Application Self Test (Vector Network Analyzer mode only)

To run the application self test, press **Shift** and **System (8)** and then Application Self Test from within the desired mode. When you are in Vector Network Analyzer mode, you will see the results window that is shown in [Figure C-2](#) (note that your instrument display may differ from this image), which summarizes the status of several key functions that are specific to this application.

If the Overall Status shows Failed, then one or more elements of the Application Self Test have failed. This self test consists of 4 subtests:

Power Supply Test: Lists any power supply voltages that are not meeting tolerance specification

VCO Calibration: Lists any frequency range over which the VCO calibration is failing

Frequency Sweep: Lists any frequency range over which errors in the sweep are occurring

EEPROM: Indicates whether reading or writing (or both) to the EEPROM has failed

C-3 Self Test or Application Self Test Error Messages

Error Messages

If any of the subtests shows FAILED, then check that the battery level is adequate for operation or that temperature is within acceptable limits. Reset to factory defaults with either Factory Defaults (**Esc+On**), or Master Reset (**System+On**).

Caution

Use of Master Reset (**System+On**), will erase all user saved setups and measurement traces and will return the VNA Master to a full Factory Default condition. If the error persists, then contact your Anritsu Service Center.

Application Self Test Results Window — SPA

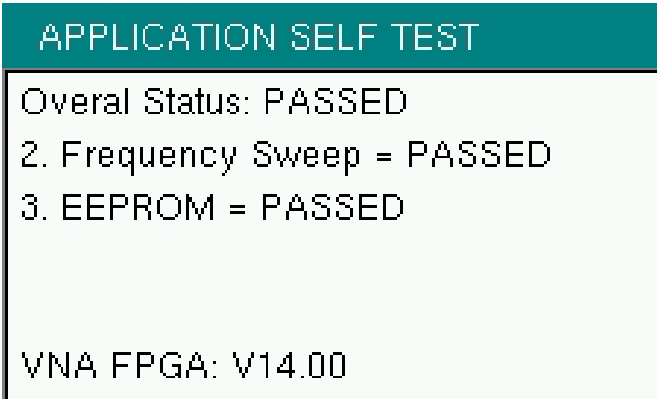


Figure C-3. Application Self Test Results Window (Spectrum Analyzer mode)

C-4 Operation Error Messages

Fan Failure

The system has determined that the fan should be running due to the internal temperature of the unit, but cannot detect that the fan is actually running.

It is important to keep the fan inlet and exhaust ports clear of obstructions. The cooling fan will vary the speed in relation to the internal temperature of the instrument (refer to [Figure C-4](#)). The fan will turn on at low speed when the internal temperature of the instrument reaches 44°C, and will increase the fan speed to maximum at 54°C. As the internal temperature of the instrument decreases, the fan will reduce speed until the temperature reaches 39°C, at which point the fan will turn off.

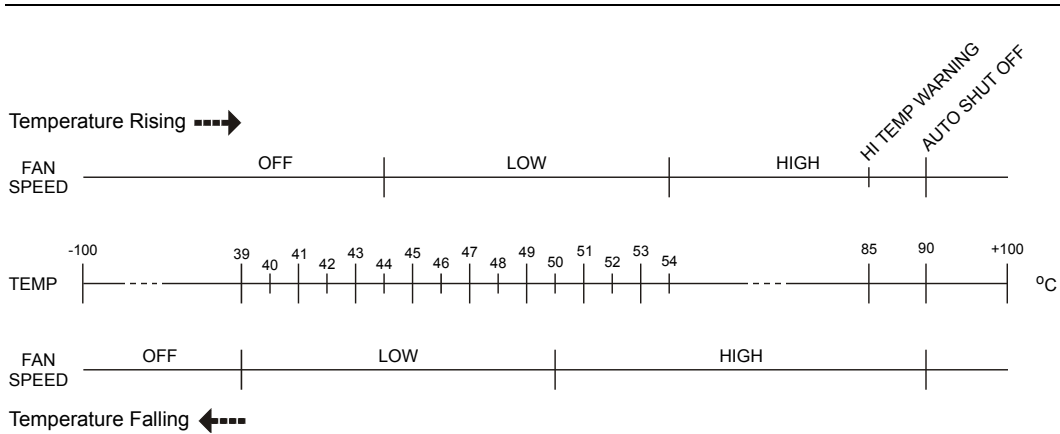


Figure C-4. Fan Speed vs. Temperature

High Temp Warning

The internal temperature has reached an excessive level, 85°C. Verify that the ventilation openings are unobstructed and that the fan is running. Internal temperatures may be manually verified by using the SELF TEST function. Turn off the unit and allow the temperature to cool down. If the fault is not resolved and the internal temperature reaches 90°C, then a countdown of 10 seconds will begin. The countdown gives the user a chance to save the current setup before the instrument turns itself off (before internal temperatures can cause any damage). If the error persists after removing any obstructions and allowing the unit to cool, then reset to the factory defaults with **Factory Defaults (Esc+On)**, or **Master Reset (System+On)**.

Caution Use of Master Reset (**System+On**), will erase all user saved setups and measurement traces and will return the VNA Master to a full Factory Default condition. If the error persists, then contact your Anritsu Service Center.

Operation not Permitted in Recall Mode

Attempted to perform an operation on a recalled trace. Many operations are valid only on a live or active trace.

PMON PLD Fail

Unable to communicate with the Power Monitor PCBA.

Power Supply

Power Supply failed. Charge the battery.

Error Saving File. General Error Saving File

An error was detected while saving a file. Try again.

C-5 Vector Network Analyzer Specific Warning Messages**Bias Tee cannot be enabled for start freq < 2MHz.**

Adjust frequency before turning On the Bias Tee.

The start frequency cannot be set less than 2 MHz when the internal or external Bias Tee is turned On. Set the frequency to a value larger than or equal to 2 MHz, and then turn on the Bias Tee.

Bias Tee is not allowed for start freq < 2MHz.

Turn Off Bias Tee before changing the freq.

The internal or external Bias Tee cannot be turned on when the start frequency is set to less than 2 MHz. Turn off the Bias Tee, and then adjust the start frequency to the desired value less than 2 MHz.

Changing Source Power**Changing Source Power will affect the accuracy of the current calibration.**

While Cal Correction is turned On, changing the source power level will affect the accuracy of the current calibration. The correction will remain On and can be used, but an indicator (?P) will appear next to the left-hand status column (CAL: ON) to note that the current power setting is different from the one used during the calibration processes.

No valid calibration to change correction.

There is no valid calibration in volatile memory that can be used to turn Cal Correction On. A new calibration must be performed.

Cannot continue with calculating.**Cannot continue with calculating. Not all required cal steps are completed.**

When performing a calibration, you must complete all of the required steps before applying the "Calculate and Finish Cal" step.

Bias Tee state cannot be changed during calibration.

While performing a calibration, and before completing all of the calibration steps, you cannot turn on the Bias Tee. You must wait till after all of the calibration steps are complete before turning on the Bias Tee. This precaution is enforced to protect the calibration components from getting damaged by the Bias Tee current.

Turning Bias Tee to OFF.

Bias Tee is turned on when a new calibration sequence is started. The Bias Tee is turned off to protect the calibration components. After all the calibration steps are completed, you can turn the Bias Tee back on as required.

Turning Bias Tee to OFF.**Turning Bias Tee to OFF. Recalling measurement does not match with current setup.**

The recalled setup or measurement file does not match the current setup. To ensure DUT safety, the Bias Tee function is turned off.

Calibration will be lost after change.**Calibration will be lost after change. Press the button again to continue.**

While performing a calibration, and before completing all the calibration steps, if you change any of the frequency parameters (start, stop, center, span) or the number of points, then the calibration must be invalidated.

Changes not allowed during calibration.**Changes not allowed during calibration. Press Esc to abort calibration.**

Certain parameters (such as frequency and number of points) can be changed while the calibration process is underway. Changing these parameters is not allowed unless the calibration is aborted first.

Option 10 (Bias Tee) not enabled.

To turn on the internal or external Bias Tee, Option 10 must be enabled in the instrument. Contact your Anritsu Service Center to inquire about enabling this option.

No External Reference signal detected.

External Reference was switched to 10 MHz but no external 10 MHz signal was detected. The External Reference setting is turned back to Off. Check the external reference level and frequency, and then try again.

Limit is not available for this Graph type.

Limits are supported only for rectilinear graph types (not for Smith Charts, for example).

Appendix D — Tower Mounted Amplifiers

D-1 Introduction

A Tower Mounted Amplifier (TMA) can be used to amplify the received signal. There are different types of TMA depending on the system requirements. Three commonly used types are:

- TMA-D - A duplex tower mounted amplifier that combines transmit and receive ports from the radio system and connects to a single antenna. This configuration is specific to systems that use a single antenna configuration.
- TMA-S - A receive-only tower mounted amplifier is installed between the receiving antenna and the radio to boost weak signals. This configuration is common on systems that implement separate antennas for transmitting and receiving.
- TMA-DD - A dual-duplex tower mounted amplifier used for radios systems with a single transmission line connection for transmit and receive. These systems are commonly called transceivers.

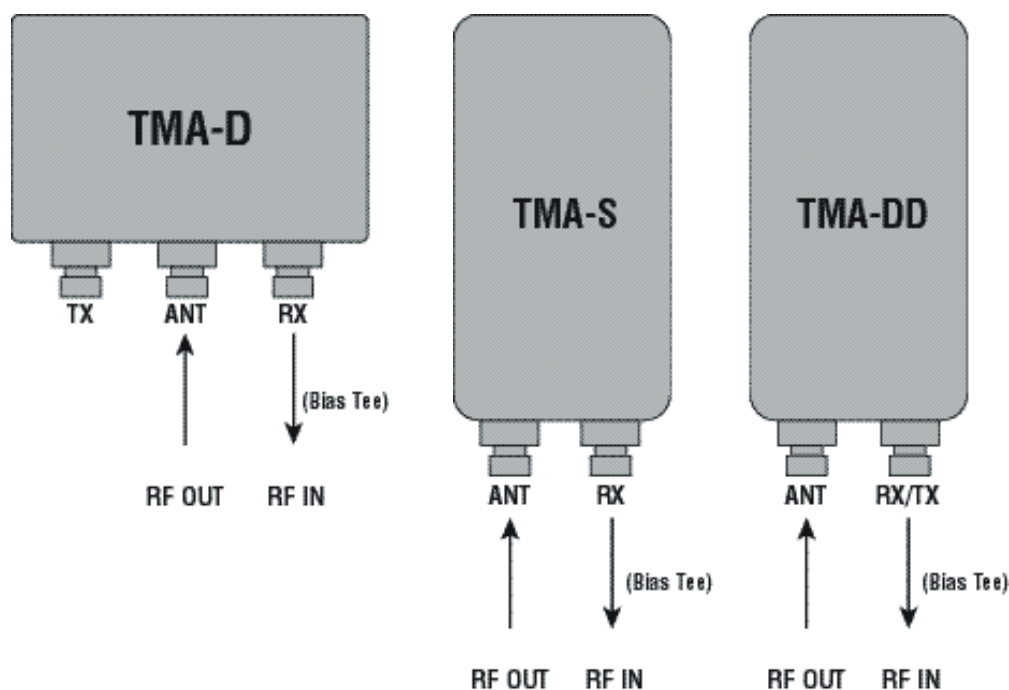


Figure D-1. Tower Mounted Amplifiers

Appendix E — Coaxial Cable

Technical Data

E-1 Coaxial Cable Technical Data

The table below provides a sample list of common coaxial cables. Your instrument cable list may be different.

Table E-1. Coaxial Cable Technical Data (Sheet 1 of 4)

Manufacturer	Cable	Prop. Vel.	Freq 1	Loss 1	Freq 2	Loss 2	Freq 3	Loss 3
Andrew	FSJ1-50A (6 GHz)	0.84	1000	0.196	2500	0.313	6000	0.532
Andrew	FSJ2-50 (6 GHz)	0.83	1000	0.133	2500	0.223	6000	0.374
Andrew	FSJ4-50B (6 GHz)	0.81	1000	0.118	2500	0.201	6000	0.348
Andrew	EFX2-50 (6 GHz)	0.85	1000	0.121	2500	0.202	6000	0.341
Andrew	LDF1-50 (6 GHz)	0.86	6000	0.306	6000	0.306	6000	0.306
Andrew	LDF2-50 (6 GHz)	0.88	6000	0.323	6000	0.323	6000	0.323
Andrew	LDF4-50A (6 GHz)	0.88	1000	0.073	2500	0.121	6000	0.218
Andrew	HJ4-50 (6 GHz)	0.914	1000	0.092	2500	0.156	6000	0.257
Andrew	HJ4.5-50 (6 GHz)	0.92	1000	0.054	2500	0.089	6000	0.148
Andrew	AVA5-50 7/8	0.91	1000	0.038	2000	0.055	2500	0.063
Andrew	AVA7-50 1-5/8	0.92	1000	0.022	2000	0.034	2500	0.038
Andrew	EFX2-50	0.85	1000	0.121	2000	0.177	2500	0.202
Andrew	FLC 12-50J	0.88	1000	0.075	2000	0.11	2500	0.134
Andrew	FLC 38-50J	0.88	1000	0.115	2000	0.169	2500	0.19
Andrew	FLC 78-50J	0.88	1000	0.041	2000	0.061	2500	0.072
Andrew	FLC 114-50J	0.88	1000	0.033	2000	0.05	2500	0.059
Andrew	FLC 158-50J	0.88	1000	0.025	2000	0.038	2500	0.042
Andrew	FSJ1-50A	0.84	1000	0.196	2000	0.285	2500	0.313
Andrew	FSJ2-50	0.83	1000	0.133	2000	0.196	2500	0.223
Andrew	FSJ4-50B	0.81	1000	0.118	2000	0.176	2500	0.201
Andrew	HJ4-50	0.91	1000	0.092	2000	0.137	2500	0.156
Andrew	HJ4.5-50	0.92	1000	0.054	2000	0.079	2500	0.089
Andrew	HJ5-50	0.916	1000	0.042	2000	0.063	2500	0.071
Andrew	HJ7-50A	0.921	1000	0.023	2000	0.034	2500	0.039
Andrew	HJ12-50	0.931	1000	0.019	2000	0.029	2000	0.029
Andrew	HL4RP-50A	0.88	1000	0.074	2000	0.109	2500	0.123
Andrew	LDF4-50A	0.88	1000	0.073	2000	0.107	2500	0.12

Coaxial Cable Technical Data

Table E-1. Coaxial Cable Technical Data (Sheet 2 of 4)

Manufacturer	Cable	Prop. Vel.	Freq 1	Loss 1	Freq 2	Loss 2	Freq 3	Loss 3
Andrew	LDF4.5-50	0.89	1000	0.054	2000	0.08	2500	0.091
Andrew	LDF5-50A	0.89	1000	0.041	2000	0.061	2500	0.07
Andrew	LDF5-50B	0.91	1000	0.041	2000	0.061	2500	0.07
Andrew	LDF6-50	0.89	1000	0.028	2000	0.042	2500	0.048
Andrew	LDF7-50A	0.88	1000	0.024	2000	0.037	2500	0.043
Andrew	LDF12-50	0.88	1000	0.021	2000	0.033	2000	0.033
Andrew	VXL5-50 7/8	0.88	1000	0.045	2000	0.066	2500	0.075
Andrew	VXL6-50 1-1/4	0.88	1000	0.032	2000	0.048	2500	0.055
Andrew	VXL7-50 1-5/8	0.88	1000	0.024	2000	0.037	2500	0.043
Belden	RG-8/8A	0.86	1000	0.132	2000	0.33	2500	0.22
Belden	RG-9/9A	0.659	1000	0.289	1000	0.289	1000	0.289
Belden	RG-17/17A	0.659	1000	0.18	1000	0.18	1000	0.18
Belden	RG-55/55A/55B	0.659	1000	0.541	1000	0.541	1000	0.541
Belden	RG-58/58B	0.77	1000	0.356	2000	0.528	2500	0.6
Belden	RG-58A/58C	0.73	1000	0.594	1000	0.594	1000	0.594
Belden	RG-142	0.7	1000	0.43	2000	0.663	2500	0.713
Belden	RG-174	0.66	1000	1.115	1000	1.115	1000	1.115
Belden	RG-178B	0.695	1000	1.509	1000	1.509	1000	1.509
Belden	RG-188	0.69	1000	0.951	1000	0.951	1000	0.951
Belden	RG-213	0.66	1000	0.262	1000	0.269	1000	0.269
Belden	RG-214	0.659	1000	0.229	1000	0.292	1000	0.292
Belden	RG-223	0.66	1000	0.476	1000	0.478	1000	0.478
Cablewave	HCC 12-50J	0.915	1000	0.087	2000	0.126	2500	0.137
Cablewave	HCC 78-50J	0.915	1000	0.041	2000	0.061	2500	0.066
Cablewave	HCC 158-50J	0.95	1000	0.022	2000	0.031	2500	0.033
Cablewave	HCC 300-50J	0.96	1000	0.015	1000	0.015	1000	0.015
Cablewave	HCC 312-50J	0.96	1000	0.013	1000	0.013	1000	0.013
Cablewave	HF 4 1/8 Cu2Y	0.97	1000	0.01	1000	0.01	1000	0.01
Cablewave	HF 5 Cu2Y	0.96	1000	0.007	1000	0.007	1000	0.007
Cablewave	HF 6 1/8 Cu2Y	0.97	1000	0.006	1000	0.006	1000	0.006
Cellflex	LCF78-50JA	0.9	1000	0.039	2000	0.058	2500	0.066
Cellflex	LCFS114-50JA	0.9	1000	0.029	2000	0.044	2500	0.051
Cellflex	LCF158-50JA	0.9	1000	0.024	2000	0.036	2500	0.042
Cellflex	LCF214-50JA	0.88	1000	0.021	2000	0.033	2000	0.033
Cellflex	UCF114-50JA	0.89	1000	0.031	2000	0.047	2000	0.047

Coaxial Cable Technical Data**Table E-1.** Coaxial Cable Technical Data (Sheet 3 of 4)

Manufacturer	Cable	Prop. Vel.	Freq 1	Loss 1	Freq 2	Loss 2	Freq 3	Loss 3
Comscope	CR50 540PE	0.88	1000	0.069	2000	0.103	2500	0.116
Comscope	CR50 1070PE	0.88	1000	0.037	2000	0.055	2500	0.064
Comscope	CR50 1873PE	0.88	1000	0.022	2000	0.034	2500	0.04
Eupen	EC4-50-HF 1/2	0.82	1000	0.108	2000	0.161	2500	0.183
Eupen	EC4-50 1/2	0.88	1000	0.074	2000	0.109	2500	0.121
Eupen	EC4.5-50 5/8	0.88	1000	0.056	2000	0.083	2500	0.094
Eupen	EC5-50 7/8	0.88	1000	0.04	2000	0.058	2500	0.066
Eupen	EC6-50 1-1/4	0.88	1000	0.028	2000	0.043	2500	0.048
Eupen	EC7-50 1-5/8	0.88	1000	0.024	2000	0.037	2500	0.042
Eupen	EC7-50A 1-5/8	0.89	1000	0.023	2000	0.035	2500	0.039
Eupen	EC12-50 2-1/4	0.88	1000	0.022	2000	0.034	2500	0.039
Nk Cables	RF1/2-50	0.88	1000	0.073	2000	0.107	2500	0.127
Nk Cables	RF1/2-50GHF	0.88	1000	0.073	2000	0.107	2500	0.127
Nk Cables	RF1/2-50BHF	0.88	1000	0.073	2000	0.107	2500	0.127
Nk Cables	RF5/8-50	0.88	1000	0.051	2000	0.075	2500	0.087
Nk Cables	RF5/8-50GHF	0.88	1000	0.051	2000	0.075	2500	0.087
Nk Cables	RF5/8-50BHF	0.88	1000	0.051	2000	0.075	2500	0.087
Nk Cables	RF7/8-50	0.88	1000	0.04	2000	0.059	2500	0.07
Nk Cables	RF7/8-50GHF	0.88	1000	0.04	2000	0.059	2500	0.07
Nk Cables	RF7/8-50BHF	0.88	1000	0.04	2000	0.059	2500	0.07
Nk Cables	RF1 5/8-50	0.88	1000	0.024	2000	0.036	2500	0.042
Nk Cables	RF1 5/8-50GHF	0.88	1000	0.024	2000	0.036	2500	0.042
Nk Cables	RF1 5/8-50BHF	0.88	1000	0.024	2000	0.036	2500	0.042
Nk Cables	RF2 1/4-50	0.88	1000	0.021	2000	0.032	2500	0.041
Nk Cables	RF2 1/4-50GHF	0.88	1000	0.021	2000	0.032	2500	0.041
Nk Cables	RF2 1/4-50BHF	0.88	1000	0.021	2000	0.032	2500	0.041
Nk Cables	RFF3/8-50	0.81	1000	0.147	2000	0.218	2500	0.25
Nk Cables	RFF3/8-50GHF	0.81	1000	0.147	2000	0.218	2500	0.25
Nk Cables	RFF3/8-50BHF	0.81	1000	0.147	2000	0.218	2500	0.25
Nk Cables	RFF1/2-50	0.82	1000	0.112	2000	0.167	2500	0.19
Nk Cables	RFF1/2-50GHF	0.82	1000	0.112	2000	0.167	2500	0.19
Nk Cables	RFF1/2-50BHF	0.82	1000	0.112	2000	0.167	2500	0.19
Nk Cables	RFF7/8-50	0.88	1000	0.04	2000	0.066	2500	0.076
Nk Cables	RFF7/8-50GHF	0.88	1000	0.04	2000	0.066	2500	0.076
Nk Cables	RFF7/8-50BHF	0.88	1000	0.04	2000	0.066	2500	0.076

Coaxial Cable Technical Data**Table E-1.** Coaxial Cable Technical Data (Sheet 4 of 4)

Manufacturer	Cable	Prop. Vel.	Freq 1	Loss 1	Freq 2	Loss 2	Freq 3	Loss 3
Times	LMR100	0.66	1000	0.789	2000	1.15	2500	1.31
Times	LMR200	0.83	1000	0.342	2000	0.49	2500	0.554
Times	LMR240	0.84	1000	0.261	2000	0.377	2500	0.424
Times	LMR400	0.85	1000	0.135	2000	0.196	2500	0.222
Times	LMR500	0.86	1000	0.109	2000	0.159	2500	0.18
Times	LMR600	0.87	1000	0.087	2000	0.128	2500	0.145
Times	LMR900	0.87	1000	0.059	2000	0.086	2500	0.098
Times	LMR1200	0.88	1000	0.044	2000	0.065	2500	0.074
Times	LMR1700	0.89	1000	0.033	2000	0.049	2500	0.057
	310801	0.821	1000	0.115	1000	0.115	1000	0.115
	311201	0.82	1000	0.18	1000	0.18	1000	0.18
	311501	0.8	1000	0.23	1000	0.23	1000	0.23
	311601	0.8	1000	0.262	1000	0.262	1000	0.262
	311901	0.8	1000	0.377	1000	0.377	1000	0.377
	352001	0.8	1000	0.377	1000	0.377	1000	0.377

Appendix F — LAN and DHCP

F-1 Introduction

This appendix describes network connections made available with Option 411 for the VNA Master. The LAN connection utilizes Ethernet configuration.

DHCP stands for Dynamic Host Configuration Protocol. This protocol allows a server to dynamically assign IP addresses to devices that are connected to the network. Most networks include a DHCP server to manage IP addresses. When a DHCP server is available on the network, DHCP is the preferred IP address mode.

F-2 Ethernet Configuration

LAN Connection

The RJ-45 connector is used to connect the VNA Master to a local area network. Integrated into this connector are two LEDs. The amber LED shows the presence of a 10 Mbit/s LAN connection when on, and a 100 Mbit/s LAN connection when off. The green LED flashes to show that LAN traffic is present. The instrument IP address is set by pressing the **Shift** key, then the **System (8)** key followed by the System Options submenu key and the Ethernet Config submenu key. The instrument Ethernet address can be set automatically using DHCP, or manually by entering the desired IP address, gateway address, and subnet mask.

Note

An active Ethernet cable must be connected to the instrument before it is turned ON in order to enable the Ethernet port for DHCP or for a static IP address.

Depending upon local conditions, the port may remain enabled when changing from DHCP to static IP address, when changing from static IP address to DHCP, or when temporarily disconnecting the Ethernet cable.

If the port becomes disabled, then ensure that an active Ethernet cable is attached to the instrument before cycling the power OFF and back ON.

Dynamic Host Configuration Protocol (DHCP) is an Internet protocol that automates the process of setting IP addresses for devices that use TCP/IP, and is the most common method of configuring a device for network use. To determine if a network is set up for DHCP, connect the MS20xxB to the network and select DHCP protocol in the Ethernet Config menu.

Turn the VNA Master off, and then on. If the network is set up for DHCP, then the assigned IP address should be displayed briefly after the power up sequence.

F-2 Ethernet Configuration

LAN and DHCP

To display the IP address with the instrument on, press the **Shift** key, then the **System (8)** key, then the System Options submenu key and the Ethernet Config submenu key. The IP address will be displayed as shown in [Figure F-1](#). The image on the display panel of your VNA Master may differ from the image shown here.

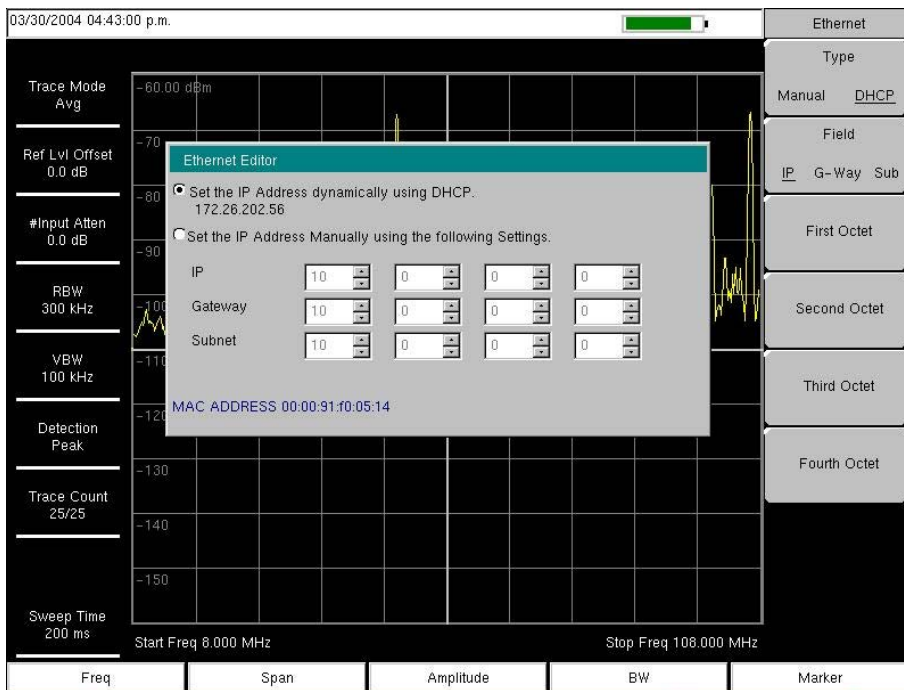


Figure F-1. IP Address Assigned Using DHCP

Ethernet Config

Press this submenu key to display the Ethernet submenu and to open the Ethernet Editor dialog box in order to set the IP address of the instrument.

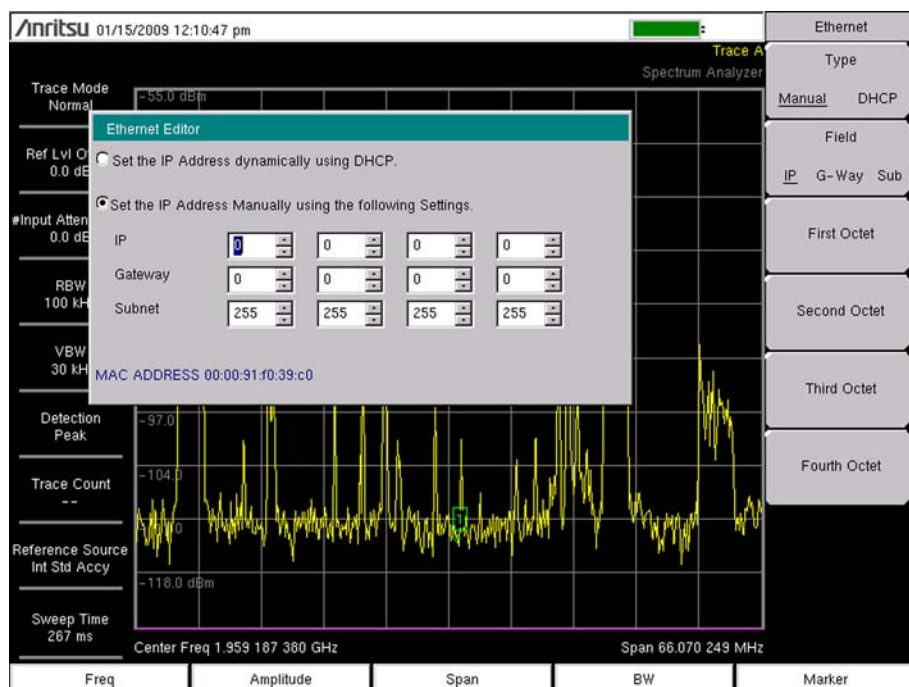


Figure F-2. Setting IP Address Manually

Ethernet Menu

Key Sequence: **Shift, System (8)** > **System Options** > Ethernet Config

Ethernet	Type
Type	Manual DHCP: Press this submenu key to select whether the address will be entered manually, or will be supplied automatically by a network DHCP server. If Manual is selected, then use the submenu keys or the Left/Right arrow keys to select the field that is to be modified. Use the keypad, the Up/Down arrow keys, or the rotary knob to enter the input. Press Enter to accept the changes, or press the Esc key to return to normal operation without changing anything.
Manual DHCP	
Field	Field
IP G-Way Sub	
First Octet	IP G-Way Sub: Press this submenu key to select the desired Internet Protocol Property to be edited.
Second Octet	First Octet: Moves the cursor to the left most column of the selected IP properties field.
Third Octet	Second Octet: Moves the cursor to the second column from the left of the selected IP properties field.
Fouth Octet	Third Octet: Moves the cursor to the third column from the left of the selected IP properties field.
	Fourth Octet: Moves the cursor to the forth column from the left of the selected IP properties field.

Figure F-3. Ethernet Menu

F-3 Using DHCP

When using DHCP, no setup is required to lease and use a dynamic IP address. In a dynamic IP operation, the assigned IP address may change from use to use. The DHCP server assigns IP addresses on a time rotation basis. As soon as the device is disconnected from the network, the IP address that it was using becomes available to lease to the next unit requesting an IP address. Normally, some amount of lag time occurs on the DHCP server end, so if the device is connected again reasonably soon, it may receive the same address.

Note

The VNA Master must be connected to the network before it is turned on in order to allow DHCP to work. Key elements of the DHCP lease are performed only during the instrument startup operations or when switching from manual to DHCP.

F-4 Static IP Address

When a DHCP server is not available, a Static IP address can be used. A Static IP address is a fixed address. After being set, it will always remain the same, and care must be taken to avoid conflict with other equipment on the network.

When using a static IP address on an established network, always request a Static IP address from the network administrator. Randomly choosing a Static IP address on an established network may result in duplicate IP addresses or other conflicts.

Three parameters must be set prior to using a Static IP address:

IP Address

This is the Static IP address on the network.

Default Gateway

Often when a static IP address is assigned, a default gateway is also identified. If the default gateway is unknown, then type in the Static IP address so that the Static IP address and Default Gateway are the same number.

Subnet Mask

This parameter is usually extracted from the Static IP address based upon the class of the address. It determines the destination of any broadcast messages that might be sent from the instrument. It can be customized if necessary. The subnet mask may also be provided with the Static IP address.

Example 1

In this example, a Static IP address has been chosen because no network is available. The instrument is connected to the network port on the PC with a crossover Ethernet cable (not included). This is also referred to as Direct Connect:

IP Address: 10.0.0.2

Default Gateway: 10.0.0.2

Subnet Mask: 255.255.0.0

Example 2

In this example, the Static IP address has been assigned with an associated gateway and subnet mask:

```
IP Address: 153.56.100.42
Default Gateway: 153.56.100.1
Subnet Mask: 255.255.252.0
```

F-5 Operating System Tools

A few tools that are built into the Microsoft Windows operating system can assist in making some determinations about the network that the PC is plugged into.

Ipconfig Tool

Typing `ipconfig` at a command prompt will display information about the in-use parameters of the PC and its network connection. Below is an example of the typical results expected.

Note The `ipconfig` display does not report if the information is from a DHCP server or a Static IP setup

```
Y:\>ipconfig
Windows 2000 IP Configuration
Ethernet adapter Local Area Connection:
Connection-specific DNS Suffix. : us.anritsu.com
IP Address . . . . . : 172.26.202.172
Subnet Mask . . . . . : 255.255.252.0
Default Gateway . . . . . : 172.26.200.1
```

Ping Tool

Another tool that can find out if a selected IP address is already on the network is `ping`. Ping is a harmless way to determine if an address is found on the network and, if it is found, for it to reply. Greatly simplified, ping sends out a request to a specific address to determine if it is there. If the specific address is found, then it will respond by sending back the same message that was received. If it is not found, then the response will be “request timed out.” This means that no reply was received from that IP address.

```
Y:\>ping 172.26.202.172
Pinging 172.26.202.172 with 32 bytes of data:
Reply from 172.26.202.172: bytes=32 time<10ms TTL=128
Reply from 172.26.202.172: bytes=32 time<10ms TTL=128
Reply from 172.26.202.172: bytes=32 time<10ms TTL=128
Reply from 172.26.202.172: bytes=32 time<10ms TTL=128
Ping statistics for 172.26.202.172:
Packets: Sent = 4, Received = 4, Lost = 0 (0% loss),
Approximate round trip times in milliseconds:
Minimum = 0ms, Maximum = 0ms, Average = 0ms
```


Appendix G — Glossary of Terms

Introduction

The following terms are used in this manual.

Glossary Terms

- Adapter :** A fitting that supplies a passage between two sets of equipment when they cannot be directly interconnected.
- Attenuation :** Attenuation refers to decreasing in signal magnitude between two points. These points may be along a radio path, transmission line or other devices.
- Attenuator :** Attenuator is a device specifically designed to decrease the magnitude of a signal transmitted through it.
- Band Pass Filter :** A Band Pass Filter is a radio wave filter with a specific range of frequencies in which it is designed to pass. It rejects frequencies outside the pass-band range. A resistor-inductor-capacitor circuit is an example of a Band Pass Filter.
- BER :** Bit Error Rate or Bit Error Ratio (link quality specification/testing) (BER) BER is a measure of transmission quality. The ratio of error bits to the total number of bits transmitted. A bit error rate of 10^{-6} refers to an average of one error per million bits. It is generally shown as a negative exponent, (for example, 10^{-7} which means 1 out of 10⁷ bits are in error or 1 out of 10,000,000 bits are in error). Bit Error Rate (BER) is the fraction of a sequence of message bits that are in error.
- BERT :** Bit Error Rate Test/Tester (BERT) BERT is a test that gauges the quality of the T1 or digital line. By sending a known pattern to another device across the span the far end device can compare incoming pattern to its' own, thereby indicating bit errors on the line.
- Broadband :** Broadband refers to telecommunication that provides multiple channels of data over a single communications medium, typically using some form of frequency or wave division multiplexing. It is a service or system requiring transmission channels capable of supporting rates greater than the Integrated Services Digital Network (ISDN) primary rate.
- Coaxial Cable :** Coaxial Cable (Coax) is a type of electrical communications medium used in the LAN environment. This cable consists of an outer conductor concentric to an inner conductor, separated from each other by insulating material, and covered by some protective outer material. This medium offers large bandwidth, supporting high data rates with high immunity to electrical interference and a low incidence of errors. Coax is subject to distance limitations and is relatively expensive and difficult to install.
- DANL :** Displayed Average Noise Level (DANL): Displayed average noise level is sometimes confused with the term Sensitivity. While related, these terms have different meanings. Sensitivity is a measure of the minimum signal level that yields a defined signal-to-noise ratio (SNR) or bit error rate (BER). It is a common metric of radio receiver performance. Spectrum analyzer specifications are always given in terms of the DANL. One of the primary uses of a spectrum analyzer is to search out and measure low-level signals. The limitation in these measurements is the noise generated within the spectrum analyzer

Glossary of Terms

itself. This noise, generated by the random electron motion in various circuit elements, is amplified by multiple gain stages in the analyzer and appears on the display as a noise signal. On a spectrum analyzer, this noise is commonly referred to as the Displayed Average Noise Level, or DANL ¹. While there are techniques to measure signals slightly below the DANL, this noise power ultimately limits our ability to make measurements of low-level signals.

dB : Decibel or deciBel (dB) is a unit for measuring relative power ratios in terms of gain or loss. The units of dB are expressed in terms of the logarithm to base 10 of a ratio and typically are expressed in watts. For example, a -3dB loss indicates a 50% loss in power; a +3dB reading is a doubling of power; 10 dB indicates an increase (or a loss) by a factor of 10; 20 dB indicates an increase (or a loss) of a factor of 100; 30 dB indicates an increase (or a loss) by a factor of 1000.

dBc : Decibels referenced to the carrier (dBc) is a technique for expressing a power measurement in logarithmic form using the carrier power as a reference. The units are used to describe how far down signals and noise are relative to a known signal. A typical use of this term is to describe spurious signals and noise compared to a desired transmit signal.

dBm : dBm is a decibel value referenced to a milliWatt (dBm) This is a technique for expressing a power measurement in logarithmic form using 1 mW as a reference. dBm is a decibel ratio (\log_{10}) of Watts (W) to one milliwatt (1mW). dBm therefore represents absolute power.

DTF : Distance-To-Fault (DTF) DTF is the distance from the instrument output connector (or the end of a test lead) to a problem area, as indicated by a peak in the displayed signal.

FFT : Fast Fourier Transform (FFT) is an efficient algorithm to compute the Discrete Fourier transform (DFT) and its inverse. FFTs are of great importance to a wide variety of applications, from digital signal processing to solving partial differential equations to algorithms for quickly multiplying large integers.

Flash Memory : Flash memory is a non-volatile solid state storage device that is packaged as a chip. It can be electrically erased and reprogrammed. It is primarily used in memory cards, USB flash drives, MP3 players, and solid-state drives for general storage and transfer of data between computers and other digital products. It is a specific type of EEPROM (electrically erasable programmable read-only memory) that is erased and programmed in large blocks.

GPS : The Global Positioning System (GPS) is a space-based global navigation satellite system (GNSS) that provides reliable location and time information in all weather and at all times when and where an unobstructed line of sight is available to four or more GPS satellites. The system is maintained by the United States government and is freely accessible by anyone with a GPS receiver. The Global Positioning System is making it possible for people using ground receivers to determine their geographic location within 10 to 100 meters. The satellites use simple mathematical calculations to broadcast

information that is translated as longitude, latitude, and altitude by Earth-based receivers.

IF : Intermediate Frequency (IF) is a frequency to which a carrier frequency is shifted as an intermediate step in transmission or reception. An intermediate electromagnetic frequency is generated by a superheterodyne radio receiver.

IP Address : An Internet Protocol address (IP address) is usually a numerical label that is assigned to each device (computer or printer for example) that is participating in a computer network that uses the Internet Protocol for communication. An IP address serves two main functions: location addressing and host (or network) interface identification. The Internet Protocol originally defined an IP address as a 32-bit number. This was known as Internet Protocol Version 4 (IPv4), which is still in use. Growth of the Internet requires a new addressing system. An Internet Protocol Version 6 (IPv6) that uses 128 bits for the address was developed in 1995, and it is standardized as RFC 2460. IPv6 began being deployed worldwide in the year 2000. IP addresses are binary

Glossary of Terms

numbers, but they are usually stored in text files and displayed in human-readable notations, such as decimal nnn.nnn.nnn.nnn or 172.16.255.1 (for IPv4), and hexadecimal nnnn.nnnn.nnnn.nnnn.nnnn.nnnn.nnnn.nnnn or 2C01:AB18:0:1234:FF03:567C:8:1 (for IPv6). In IPv4, each decimal group (nnn) represents values from 000 to 255, or binary values of 8 bits. In IPv6, each hexadecimal group (nnnn) represents values from 0000 to FFFF, or binary values of 16 bits (0000 0000 0000 0000 to 1111 1111 1111 1111).

- IPv6 :** Internet Protocol Version 6 (IPv6) is a numerical label that is used to identify a network interface of a computer or other network node participating in an IPV6-enabled computer network. IPv6 uses 128 bits for the address (as compared to an IPv4 address, which is defined as a 32-bit number). IPv6 was developed in 1995, and it is standardized as RFC 2460. IPv6 began being deployed worldwide in the year 2000. IP addresses are binary numbers, but they are usually stored in text files and displayed in human-readable notations, such as hexadecimal nnnn.nnnn.nnnn.nnnn.nnnn.nnnn.nnnn.nnnn or 2C01:AB18:0:1234:FF03:567C:8:1 (where FFFF [Hex] = 65535 [Dec]). Each hexadecimal group (nnnn) represents values from 0000 to FFFF, or binary values of 16 bits (0000 0000 0000 0000 to 1111 1111 1111 1111).
- LPA :** Linear Power Amplifier (LPA) is the final amplification stage in a multicarrier transmitter that has been designed and optimized to produce a linear response. By operating in the linear mode, the amplifier reduces the non-linear effects that produce intermodulation products and side-lobe spectra that cause adjacent channel interference.
- NF :** Noise Figure (NF) is a measure of degradation of the signal-to-noise ratio (SNR) that is caused by components in a radio frequency (RF) device. The noise factor (F) of a system is defined as the signal-to-noise ratio of the input power of the system divided by the signal-to-noise ratio of the output power of that system. NF (the noise figure) is defined as the decibel value of the noise factor. $NF = 10\log(F)$ where log uses the base 10, or common log. This formula is valid only then the input termination is at standard noise temperature.
- OBW :** Occupied Bandwidth (OBW) Occupied Bandwidth is a measure of the bandwidth containing 99% of the total integrated power of the transmitted spectrum, centered on the assigned channel frequency. Interference to other channels or to other systems can occur if OBW is too large.
- OTA :** Over The Air (OTA): OTA refers generally to any transfer of information or signal that takes place in a wireless environment, rather than using a wired connection. OTA is usually used in connection with a standard defining the provisioning of mobile devices and applications, such as downloading or uploading content or software, and commonly used in conjunction with the Short Messaging Service (SMS). SMS OTA Messages contain information that is used to configure the settings of a WAP browser in a mobile phone (refer to SMS and WAP).

- RBW :** Resolution Bandwidth (RBW) With spectrum analyzers, a narrow band filter is swept across a frequency span to create the spectrum display. The filter bandwidth (RBW) determines the frequency resolution across the frequency axis.
- Signal loss :** Signal loss is the amount of signal strength that's lost in antenna cable, connectors, and free space. Signal loss is measured in decibels.
- Smith Chart :** A Smith Chart is a graphical aid for electrical and electronics characteristics in radio frequency (RF) circuits. Smith Chart was invented by Phillip Smith at Bell Laboratories in 1939. The chart can be used to display multiple parameters, such as impedance, and admittance.
- S-parameter :** S-parameters are scattering parameters, and are a signal ratio of reflection and transmission measurements. For a 2-port network, four fundamental S-parameters can be measured, and they are defined as S_{xy} (where x and y are subscripts of S). The first number (x) is the port number into which the signal is being injected, and the second number (y) is the port number from which the signal is leaving. The S-parameter is the ratio of these two signals. S_{11} is Forward Reflection. S_{21} is Forward Transmisssion. S_{12} is Reverse Transmission. S_{22} is Reverese Reflection.
- TMA :** A Tower Mounted Amplifier (TMA) amplifies signals from an antenna to reduce the noise figure of a base transceiver station (BTS). This helps to improve the overall sensitivity of the BTS. A TMA is a low-noise amplifier (LNA) that is usually mounted as close as practical to the antenna in Base Transceiver Stations or in mobile masts. When using a TMA, the antenna is able to receive weaker signals.

Index

A

access control, Internet	5-5
additional documents	A-1
address, Ethernet IP address	F-1
annual verification	1-8
Anritsu service centers	1-1
Anritsu, contact	1-1
application	
self test	5-12
application options	
menu	5-6
application self test submenu key	5-3

B

battery	
and chargers	2-18
capacity	2-1
replacement	1-9
storage warning	Safety-2
symbols	2-17
bias tee	7-1
black & while display setting	2-10
black and white display soft key	5-9
block diagram, TMA	D-1
brightness soft key	5-9

C

calibration	
2 port, considerations	3-6
image, 2-port	3-7
temperature change	1-7
touch screen shortcut	2-7
warm up first	1-7
carrying case	1-5
caution	
automotive power adapter	1-10, 2-1
cleaning instrument	1-7
ESD damage	1-8
fan port blocking	1-5
fan ventilation	2-3
test cables	1-7
center frequency sharing	5-5
change directory	4-9
change file type	4-9
charging battery	1-10

connector

care	2-15
identifying	1-3, 2-12
panel MS2024B	2-12
panel MS2035B	2-13
torque specs	2-16
connector power	
external reference in connector	2-16
external trigger in connector	2-16
RF In connector	2-16
VNA Port 1 and 2 connectors	2-16
contacting Anritsu	1-1
copy menu	4-13
create folder	4-10

D

data entry	2-19
data loss during firmware update	5-12
default colors soft key	5-9
default gateway	
functions overview	F-5
delta marker setup	3-4
DHCP	
LAN connection	F-1
display	5-4
overview	2-9
settings	2-10
touch points	2-7
display settings menu	5-9
Dynamic Host Configuration Protocol	
see DHCP	

E

electrostatic discharge	1-8
entering data	2-19
erasing memory	1-11
ESD damage, cautions	1-8
Ethernet	
configuration	F-3
IP address	F-1
menu	F-4
Ethernet, option 441	2-14
Ethernet, remote access password	5-5
external power connector	2-13
external reference in connector	2-16
external trigger in connector	2-16

F

factory defaults soft key	5-10
---------------------------	------

G to M

file	
management	4-2
menu	4-8
setup file, recalling	4-12
setup file, saving	4-9
types, by extension	4-1
find marker value	3-4
firmware	
updating	5-10, 5-12
floppy icon	2-18
frequency	
calibration considerations	3-8
range	1-2
full 2-port calibration	
calibration considerations	3-6
function hard key, same as hard key	2-7

G

gateway	
part of IP address	F-1
general instrument specs	
ESD damage	1-8
GPS	
antenna connector	2-16
menu	6-3
option 31, main topic	6-1

H

hard key (main menu key)	2-7
headset jack	2-14
high contrast	
display setting	2-10
soft key	5-9
http, contacting Anritsu	1-1

I

icons	
adding and deleting	2-5
front panel image	2-4
front panel shortcuts	2-5
impedance soft key	5-7

instrument settings summary, image	2-9
internal memory	1-4
invert black & while display setting	2-10
invert black and white display soft key	5-9
IP address	F-1

L

LAN connection	F-1
remote access password	5-5
line of sight, GPS	6-1
links	
contacting Anritsu	1-1
MS2024B product page	1-1
MS2025B product page	1-1
MS2034B product page	1-1
MS2035B product page	1-1

M

main menu key (hard key)	2-7
maintenance	1-7
marker	
delta, setup	3-4
find value	3-4
peak and valley search	3-3
using	3-3
master reset soft key	5-10
Master Software Tools	
driver for Windows XP	2-14
maximum power	
external reference in connector	2-16
external trigger in connector	2-16
RF In connector	2-16
VNA Port 1 and 2 connectors	2-16
meas gain range menu	5-8
measurement guides	A-1
measurement setups in memory	1-4
memory	
erasing	1-11
security	1-11
storage, internal	1-4

menu			
application options	5-6	peak search via marker	3-3
copy	4-13	power offset sharing	5-5
delete	4-14	power supply	
display settings	5-9	failure	C-6
Ethernet	F-4	sources	2-1
file	4-8	power, maximum	
GPS	6-3	external reference in connector	2-16
meas gain range	5-8	external trigger in connector	2-16
mode selector	2-21	RF In connector	2-16
options, system	5-4	VNA Port 1 and 2 connectors	2-16
preset	5-11	preset	
recall	4-12	menu	5-11
reset	5-10	soft key	5-11
save	4-9	preventive maintenance	1-7
save location	4-10		
save on event	4-11	Q	
system	5-3	quick name, saving files	4-3
system group	5-2		
system options	5-4	R	
system options 2/2	5-5	recall menu	4-11, 4-12
system options, display	5-9	recall setup soft key	5-11
mode selector menu	2-21	refresh directories	4-10
models and freq ranges	1-2	remote access control	5-5
MS2024B product page (URL)	1-1	repairs, service centers	1-1
MS2025B product page (URL)	1-1	replacing the battery	1-9
MS2034B product page (URL)	1-1	reset menu	5-10
MS2035B product page (URL)	1-1	resetting memory	1-11
		RF In connector	2-16
N			
night vision		S	
display setting	2-10	Safety Symbols	
soft key	5-9	For Safety	Safety-2
O		In Manuals	Safety-1
option		On Equipment	Safety-1
10, Bias Tee	7-1	satellites, GPS	6-1
31, GPS	6-1	save menu	4-9
441, Ethernet	2-14	save setup soft key	5-11
501, distance domain	3-6	saving measurements	3-14
options (system options)		SCPI commands, not with password	5-5
display menu	5-9	search, marker value	3-3
overview of instrument features	2-2	security of memory	1-11
P		select files and folders	4-13
parts replacement, service centers	1-1	self test	
password		application self test submenu key	5-3
remote access control	5-5	at start up	5-12
submenu key description	5-5	self test submenu key	5-3
		service centers	1-1
		set remote access password key	5-5
		set up delta marker	3-4

T to W

setting

amplitude, SPA

3-10

BW, SPA

3-9

distance domain, VNA

3-6

freq, SPA

3-9

limit line, SPA

3-11

limit line, VNA

3-5

markers, SPA

3-12

markers, VNA

3-3

power offset, SPA

3-10

scale, VNA

3-3

signal standard, SPA

3-9

span, SPA

3-10

freq, VNA

3-2

share center freq and power offset key

5-5

shortcut, touch screen calibration

2-7

single sweep

2-18

soft case

1-5

soft key (submenu key)

2-7

stand, tilt bail

1-6

submenu key (soft key)

2-7

subnet

F-1

symbols

battery charging

2-18

battery status

2-9, 2-17

floppy icon

2-18

GPS icon

2-9

menu key screen icons

2-4

red plug body

2-18

system

menu

5-3

menu group

5-2

power on self test

5-12

system options

menu, display

5-9

system options 2/2 menu

5-5

system self test

5-12

T

temperature change, calibration

1-7

tilt bail

1-6

TMA (Tower Mounted Amplifier)

D-1

torque specs for connectors

2-16

touch screen

calibration shortcut

2-7

keyboard

2-20

keys

2-7

touch points

2-7

trace label soft key

5-6, 5-7

traces in memory

1-4

U

units soft key

5-6, 5-7

update firmware soft key

5-10

URL contacting Anritsu

1-1

USB

connectors

2-14

interface

2-14

memory

1-4

use of phase stable Cable

1-7

V

valley search via marker

3-3

verification, annual instrument

1-8

VNA Master

freq ranges

1-2

overview

2-2

VNA Port 1 and 2 connectors

2-16

W

warm up before calibration

1-7

warning

battery storage

Index-1

data loss during firmware update

5-12

external power connection

2-13

no SCPI commands with password

5-5

web links

MS2024B product page

1-1

MS2025B product page

1-1

MS2034B product page

1-1

MS2035B product page

1-1

Web site, contacting Anritsu

1-1

Anritsu



10580-00301



F



Anritsu utilizes recycled paper and environmentally conscious inks and toner.

Anritsu Company
490 Jarvis Drive
Morgan Hill, CA 95037-2809
USA

<http://www.anritsu.com>