

*High Precision Single Fiber Cleaver*

# *CT-06 series*

**NEW PRODUCT**

**CT-06A**

**Suitable for FTTH**  
**Dedicated for single fiber cleaving.**  
**Outstanding cost performance.**



**Circular blade sliding**



**Easy fiber placing**



**Simple action**



**Fiber scrap collection**

**SPECIFICATION**

Description	CT-06	CT-06A	CT-06B
Applicable fiber	Conventional silica optical fiber		
Fiber count	Single fiber		
Bare fiber diameter	125 μm		
Fiber placing	Fiber holder	Fiber plate AD-10	Fiber plate AD-30B
Coating diameter	250 to 900 μm (2mm/3mm cord & drop cable with AD-30C)		
Cleave length	10 mm	5 to 20 mm (coating diameter = 250 μm) 10 to 20 mm (coating diameter > 250 μm)	16 mm
Cleave angle	0.5 degrees		
Blade life	48,000 fibers (1,000 fibers x 3 heights x 16 positions)		
Dimensions	113.5(W) x 82(D) x 42(H) mm (Including fiber scrap collector)		
Weight	225 g		

**STANDARD PACKAGE**

Description	Model No.	CT-06	CT-06A	CT-06B
Main body*	CT-06	1pc.	1pc.	1pc.
Fiber plate	AD-10	-	1pc.	-
	AD-30B	-	-	1pc.
Carrying case	CC-31	1pc.	1pc.	1pc.
Hexagonal wrench	HEX-01	1pc.	1pc.	1pc.
Instruction manual	M-CT05-E	1pc.	1pc.	1pc.

\* Fiber scrap collector is included in standard package

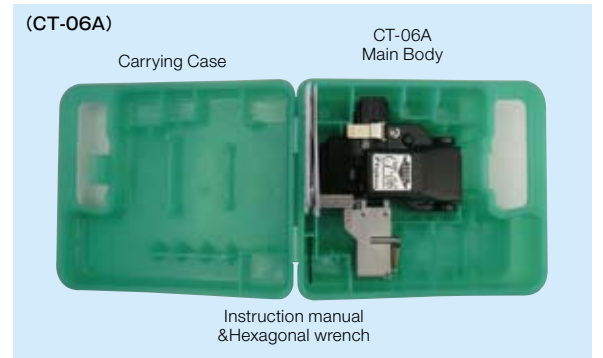
**OPTIONAL ITEMS**

Description	Model No.	Note
Fiber plate	AD-10	Cleaving length : 5 to 20 mm (coating diameter = 250 μm) 10 to 20 mm (coating diameter > 250 μm)
	AD-30B	Cleaving length : 16 mm fixed at 0.25 to 0.9 mm coating diameter
	AD-30C	Cleaving length : 11 mm fixed at 2 to 3 mm coating diameter (for 2mm/3mm cord & drop cable)

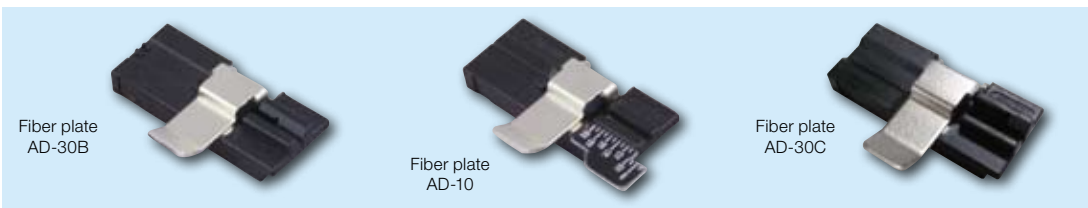
**FIBER HOLDERS**

Description	Model No.
Applicable fiber holder	FH-100-250 to 900 FH-50-250 / FH-50-900 FH-60-250 / FH-60-900

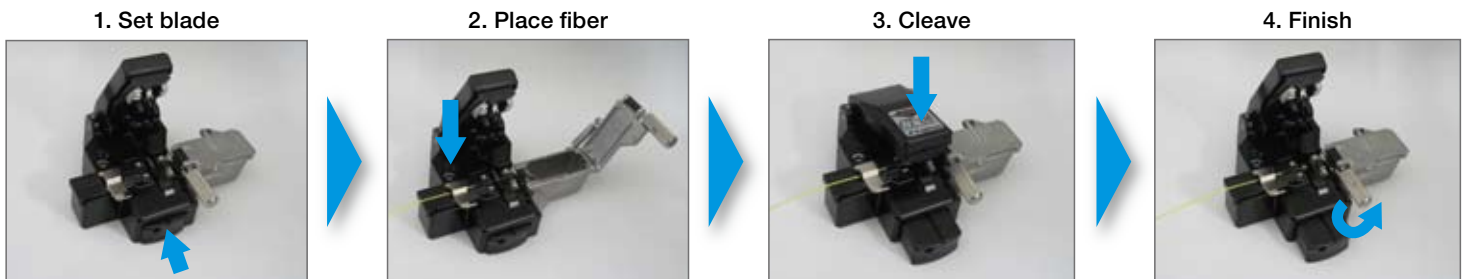
**Standard Package**



**Optional Items**



**Cleaving procedure**



Specifications and descriptions are subject to change without prior notice.

**Fujikura Ltd.**

1-5-1, Kiba, Koto-ku, Tokyo 135-8512, Japan  
Phone:+81-3-5606-1164 Fax:+81-3-5606-1534 <http://www.fujikura.co.jp>

**Fujikura Asia Ltd.**

438A Alexandra Road, Block A Alexandra Technopark #08-03 Singapore 119967  
Phone:+65-6-278-8955 Fax:+65-6-278-0965 <http://www.fujikura.com.sg>

**Fujikura Europe Ltd.**

C51 Barwell Business Park, Leatherhead Road, Chessington, Surrey KT9 2NY, UK  
Phone:+44-20+8240-2000 Fax:+44-20-8240-2010 <http://www.fujikura.co.uk>

**AFL Telecommunications**

260, Parkway East, Duncan, SC29334, USA  
Phone:+1-800-235-3423 Fax:+1-800-926-0007 <http://www.afglobal.com>

**Fujikura (China) Co., Ltd.**

16th Floor, Shanghai Hang Seng Bank Tower, 1000 Lujiazui Ring Road, Pudong New Area, Shanghai, 200120 CHINA  
Phone +86-21-6841-3636 FAX +86-21-6841-2070 <http://www.fujikura.com.cn>