

# Network Master Series

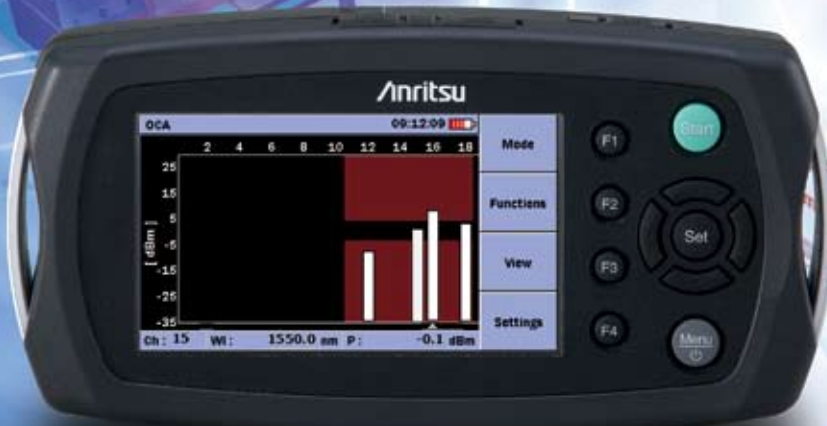
MT9090A

Mainframe

MU909020A

Optical Channel Analyzer Module





## CWDM Access Network Testing Redefined!

### MT9090A/MU909020A OVERVIEW

Many operators choose Coarse Wavelength Division Multiplexing (CWDM) technology to increase bandwidth capacity in metro access and enterprise networks, where deploying DWDM systems would be cost prohibitive. Although OSAs are well adapted for testing long-haul WDM links, their complexity, big size, heavy weight, slow measuring time, and high price make them inappropriate for use as field testers in CWDM access networks.

The new MT9090A Optical Channel Analyzer from Anritsu finally addresses this need by providing all the features and performance required for installation and maintenance of CWDM networks in a compact modular test set. It provides unmatched value and ease of use, while not compromising performance. The MT9090A provides an overview of the power levels and wavelengths of all 18 CWDM channels at a glance, with easy comparison to pass and fail indicators. It also enables long-term characterizations with several drift functions.

The MT9090A with the MU909020A module is an essential tool for CWDM networks. Its ease of use, low price, measuring speed, robustness, and size make it the perfect product for field CWDM testing.

### Key Features

- Dedicated tool for installation, commissioning, and troubleshooting of CWDM networks
- Fast and accurate overview of all CWDM channels and channel drifts over time
- Fully compliant to the ITU-T G.695 and G.694.2 standards
- Pre-stored or user-defined threshold values for easy Go/No Go testing
- Power meter operation with measurement of the total incident power
- Short boot-up and warm-up times plus long battery life, for rapid field characterization of CWDM networks
- High resolution, widescreen color display that is easy to read indoors or out
- Rugged, sealed design provides years of service in the most challenging environments
- Modular platform ensures maximum return on investment
- Compact and lightweight design for maximum portability in the field
- High performance without a high price

# Designed for field operations

The MT9090A is purpose built for testing CWDM channels in the field. Its hardware and user interface are optimized for simplicity, making it easy to use for any skill level, and it is rugged enough to function in any harsh environment.

## Quick Startup

The MT9090A is ready for measurement in about 15 seconds, so productive work can start immediately.

## Long Battery Life

Since AC power is not always available where you need it, especially at fiber pedestals, the MT9090A typically provides 4 hours of testing on a single charge. This, coupled with an optional car cigarette lighter cord, guarantees the MT9090A is ready when you are.

## Portable

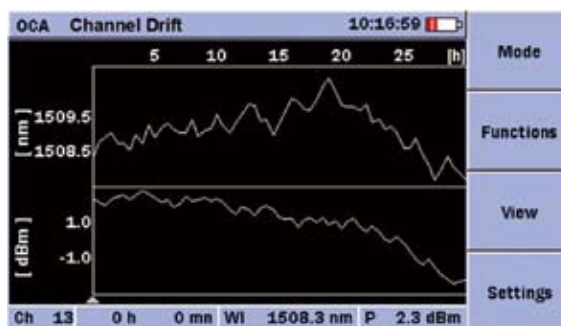
With its lightweight design and user friendly dimensions, the MT9090A is perfect for the outside plant environment and can easily be managed with one hand. Its standard softcase with shoulder strap further facilitates portability when traveling from the truck to the testing site.

## Rugged

With no moving parts for channel detection, and no fans or vents to allow dust or moisture to enter the unit, the MT9090A was designed for the challenging outside plant environment.

## 4.3 Inch Wide Screen Display for Easy Viewing

The high resolution, full color, 4.3 inch wide screen display is the perfect format for viewing results. It also provides excellent readability both indoors and outdoors.



## No Experience Required

With the MT9090A, the expertise is built in. Using intuitive graph and table displays of wavelength and power levels and drifts, with pass and fail indicators defined by the ITU-T G.695 standard, anyone can certify and troubleshoot CWDM networks.

## Small on price, not on features!



- 1) 4.3 inch high resolution, indoor/outdoor color display
- 2) Dedicated function keys for performing tasks
- 3) START key for fast testing
- 4) Arrow keys for zooming, cursor movement, and menu navigation
- 5) SET to select/accept
- 6) Menu key for easy access to set-ups and mass storage
- 7) Optical port with universal connector adapter
- 8) Dual USB ports for quick and easy data transfer

# Dedicated tool for CWDM applications

Anritsu designed the MT9090A/MU909020A to measure and monitor power and wavelength over the 18 CWDM channels. With its fast and reliable measurements, and a software interface focused exclusively on the features needed for quick and easy characterization of CWDM links, it is a cost-effective alternative to more complex OSAs for the CWDM market.

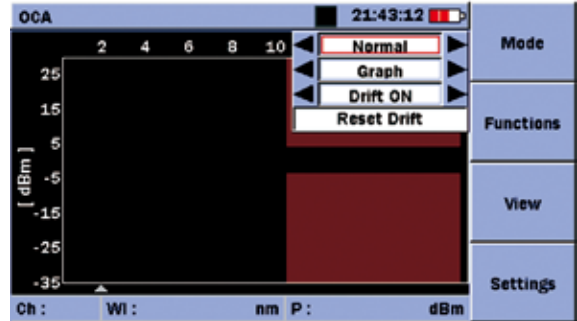
## Fast Measurement

With no moving parts, the MU909020A is faster than any OSA, providing quick troubleshooting of a CWDM network.

## Intuitive Operation

Using simple navigation in the function keys menu, results are displayed in comprehensive graphs and tables. These provide an instantaneous overview of channels, central wavelengths, power levels, and drifts over time.

Press the F1 key to select the displayed mode,

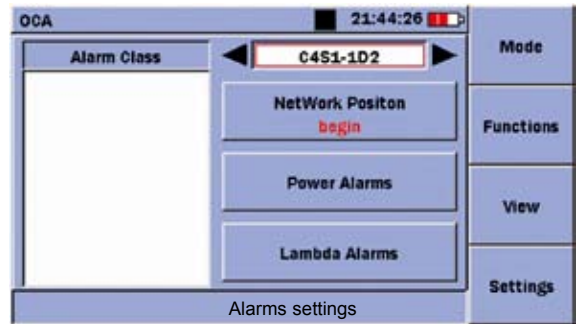


Mode selection

And simply press the START key to begin the characterization.

## PASS/FAIL Thresholds

Threshold values are stored for all parameters and configurations defined in ITU-T G.695 standard. Select the appropriate alarm class and position in the network in the settings menu. User defined thresholds and configurations can also be set and stored.



Alarms settings

Failures are easily identified with pass and fail indicators in any displayed mode, for immediate diagnosis of the CWDM link.

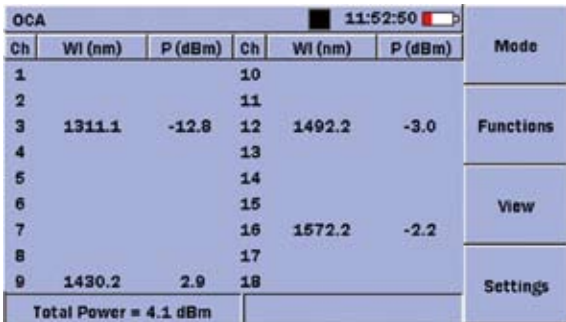
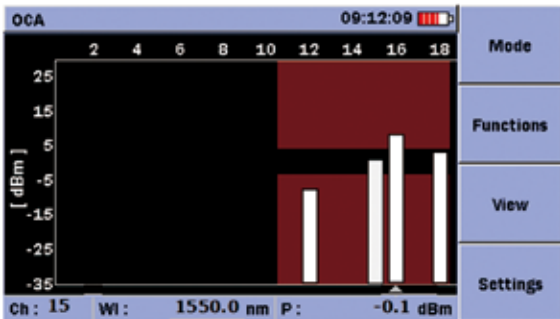
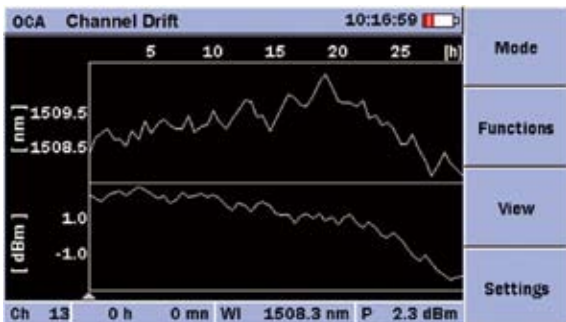


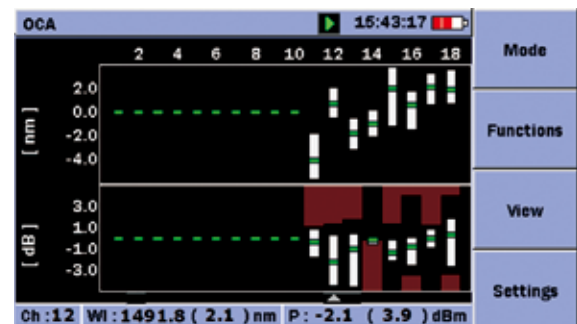
Table mode



Graph mode



Channel drift graph mode



Alarms in drift graph mode

# Despite its size...it is not a toy!

People prefer to choose products that are innovative and supplied by established companies. When you need to install and maintain optical networks, this same criteria should apply. With many years of experience in optical testing, Anritsu delivers the features that matter.

Having a long history in the test and measurement business, we understand the importance of performance, portability, reliability, easy operation, and of course price.



## Screen Capture Function

Test results are sometimes useful for adding to reports, so the MT9090A features the ability to save screen shots as Bitmap images.

## Free and Simple Software Upgrades

Firmware upgrades are easily performed via USB. They are available from the Anritsu website for registered users or through Anritsu customer support.

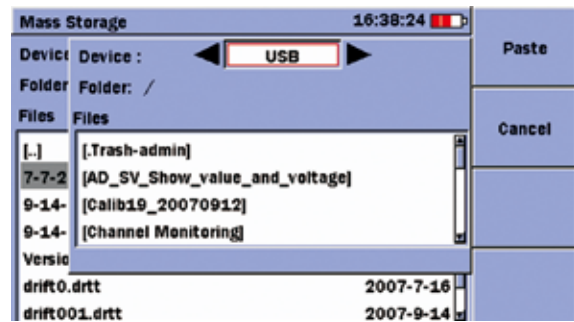
## Simple Data Storage

With internal data storage plus support for external USB memory devices, the MT9090A is more than capable. Press the Menu key and store up to 256 MB of images, results, and settings in the internal memory.



## Easy "drag and drop" File Transfers

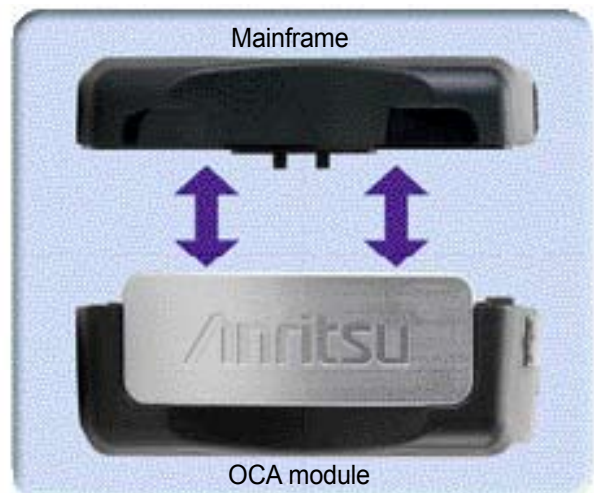
When the MT9090A is connected to a PC via a USB cable, the internal memory can be directly accessed. Data can be selected, dragged, and dropped into the PC memory, greatly simplifying file transfers. The MT9090A also supports the use of USB memory sticks.



File transfer to USB memory stick

## Modular Design

The MT9090A features a modular design allowing modules to be changed easily in the field. Users can interchange different Optical Channel Analyzer modules or perform other optical network testing such as verification of drop cable installation with the available MU909011A Fault Locator module. Operation of all the modules is quite similar, so the user will immediately be familiar with their operation.



# Specifications

## MT9090A Mainframe

Dimensions and Mass	190 (W)mm x 96 (H)mm x 48 (D)mm (7.5"x3.8"x1.9") Weight (including mainframe, module and battery): <800 g (<2 lbs.)
Display	4.3 inch TFT-LCD (480x272, with backlight, transparent type)
Interface	USB 1.1, Type A x1 (memory), Type B x 1 (USB mass storage)

## MU909020A Optical Channel Analyzer

Model	MU909020A
Number of channels	All 18 CWDM channels, compliant to ITU-T G.694.2
Channel pass band	±6.5 nm, compliant to ITU-T G.695
Channel wavelength accuracy	±1 nm <sup>*2</sup>
Power range per channel	+10 dBm to -40 dBm
Channel power accuracy	±0.5 dB <sup>*1</sup>
Channel power linearity	±0.3 dB <sup>*2</sup>
Total power accuracy	±0.5 dB <sup>*1</sup>
Total power linearity	±0.3 dB <sup>*2</sup>
Maximum total safe power	+17 dBm
Maximum channel safe power	+13 dBm
Instrument repeatability	±0.2 dB <sup>*1</sup>
Channel imbalance (adjacent channels)	≥12 dB <sup>*2, *3</sup>
Polarization Dependant Loss	±0.3 dB
Power supply	9 VDC, 100 to 240 VAC
Battery	NiMH, Operating Time: 4 hours (typical) <sup>*4</sup> , Recharge Time:<3 hours <sup>*5</sup> , Operation Possible with 4 x AA alkaline: operating time depends on batteries type
Environmental Conditions	Operation: 0°C to +50°C <sup>*6</sup> , <80% (non-condensing) <sup>*7</sup> , Storage: -20°C to +60°C Vibration: MIL-T-28800E Class 3, Dust and Drip proof: IP 51
EMC	EN61326

\*1: Measured at -10 dBm

\*2: Signal from +10 to -35 dBm

\*3: for wavelengths spacing > 15 nm. Channel imbalance >15 dB for wavelengths spacing > 20 nm

\*4: Backlight low

\*5: 10°C to +30°C, Power OFF

\*6: Specifications are guaranteed from 10°C to 40°C. Operation possible from 0°C to 50°C.

\*7: 10°C to +30°C (During Recharging battery, Power OFF)



# Ordering Information

Please specify the model/order number, name and quantity when ordering. The names listed in the chart below are Order Names. The actual name of the item may differ from the Order Name.

## 1) Select Mainframe

Model/Order No.	Description
MT9090A	Mainframe (with color LCD)

## 2) Select Base Module

Includes battery pack, AC charger/adaptor, standard soft case, and strap, operation manual on CD

Model/Order No.	Description
MU909020A	Optical Channel Analyzer Module

## 3) Select Connector Interface

Model/Order No.	Description
MU909020A-050	OCA with UPC optical connector
MU909020A-060	OCA with APC optical connector

## 4) Select Connector Adapter

One adapter included at no charge – must be added as a separate line item.

Model/Order No.	Connector Type
MU909020A-037	FC Connector (UPC: Model -050 only)
MU909020A-040	SC Connector (UPC: Model -050 only)
MU909020A-025	FC-APC Connector key width 2.0 mm (APC: Model -060 only)
MU909020A-026	SC-APC Connector (APC: Model -060 only)

## 5) Select Accessories

Must be added as separate line items.

Model/Order No.	Description
G0203A	AC adaptor (Replacement)
G0202A	NiMH Battery Pack (Replacement)
B0600A	Hard Case
B0601A	Standard Soft Case
Z1023A	Strap
B0602A	Deluxe Soft Case (for MT9090A)
CD005568	Hardcopy MT9090A/MU909020A Operation manual
CD005780	Hardcopy MT9090A/MU909020A Quick Reference Guide
MU909020A-ES210	2 years Extended Warranty Service (total 2 years warranty)
MU909020A-ES310	3 years Extended Warranty Service (total 3 years warranty)

## 6) Replacement Adaptors

Must be added as separate line items.

Model/Order No.	Description
J0617B	FC (UPC: Models -050)
J0619B	SC (UPC or APC: all models)
J0739A	FC (APC: Model -060 only)



**Standard Soft Case**



**Deluxe Soft Case**

Full Network Master operation without removal from the case. Provides excellent protection for use in harsh conditions.

**MU909011A Fault Locator Module for MT9090A**

Compact fault locator instrument for an easy and accurate verification of drop cable installation



**CMA5000 OSA425 / OSA400**

Field portable DWDM/CWDM testers



**CMA5 Basic Power Meter and Light Source**

The CMA 5 series power meters and light sources are basic economical tools for loss budget testing in optical networks.



**CMA50 Loss Test Sets**

Anritsu's CMA50 series loss test sets are designed for attenuation and throughput measurements of fiber optic links. Key features include automated, bi-directional testing, ORL, data storage, referencing, and auto-wavelength switching.



Specifications are subject to change without notice.

**Anritsu Corporation**

5-1-1 Onna, Atsugi-shi, Kanagawa, 243-8555 Japan  
Phone: +81-46-223-1111  
Fax: +81-46-296-1264

**• U.S.A.**

**Anritsu Company**

1155 East Collins Blvd., Suite 100, Richardson, TX 75081, U.S.A.  
Toll Free: 1-800-267-4878  
Phone: +1-972-644-1777  
Fax: +1-972-671-1877

**• Canada**

**Anritsu Electronics Ltd.**

700 Silver Seven Road, Suite 120, Kanata, Ontario K2V 1C3, Canada  
Phone: +1-613-591-2003  
Fax: +1-613-591-1006

**• Brazil**

**Anritsu Eletrônica Ltda.**

Praca Amadeu Amaral, 27 - 1 Andar  
01327-010-Paraiso-São Paulo-Brazil  
Phone: +55-11-3283-2511  
Fax: +55-11-3288-6940

**• Mexico**

**Anritsu Company, S.A. de C.V.**

Av. Ejército Nacional No. 579 Piso 9, Col. Granada  
11520 México, D.F., México  
Phone: +52-55-1101-2370  
Fax: +52-55-5254-3147

**• U.K.**

**Anritsu EMEA Ltd.**

200 Capability Green, Luton, Bedfordshire, LU1 3LU, U.K.  
Phone: +44-1582-433200  
Fax: +44-1582-731303

**• France**

**Anritsu S.A.**

16/18 avenue du Québec-SILIC 720  
91961 COURTABOEUF CEDEX, France  
Phone: +33-1-60-92-15-50  
Fax: +33-1-64-46-10-65

**• Germany**

**Anritsu GmbH**

Nemetschek Haus, Konrad-Zuse-Platz 1  
81829 München, Germany  
Phone: +49-89-442308-0  
Fax: +49-89-442308-55

**• Italy**

**Anritsu S.p.A.**

Via Elio Vittorini 129, 00144 Roma, Italy  
Phone: +39-6-509-9711  
Fax: +39-6-502-2425

**• Sweden**

**Anritsu AB**

Borgafjordsgatan 13, 164 40 KISTA, Sweden  
Phone: +46-8-534-707-00  
Fax: +46-8-534-707-30

**• Finland**

**Anritsu AB**

Teknobulevardi 3-5, FI-01530 VANTAA, Finland  
Phone: +358-20-741-8100  
Fax: +358-20-741-8111

**• Denmark**

**Anritsu A/S**

Kirkebjerg Allé 90, DK-2605 Brøndby, Denmark  
Phone: +45-72112200  
Fax: +45-72112210

**• Spain**

**Anritsu EMEA Ltd.**

**Oficina de Representación en España**  
Edificio Veganova  
Avda de la Vega, n° 1 (edf 8, pl 1, of 8)  
28108 ALCOBENDAS - Madrid, Spain  
Phone: +34-914905761  
Fax: +34-914905762

**• United Arab Emirates**

**Anritsu EMEA Ltd.**

**Dubai Liaison Office**  
P O Box 500413 - Dubai Internet City  
Al Thuraya Building, Tower 1, Suit 701, 7th Floor  
Dubai, United Arab Emirates  
Phone: +971-4-3670352  
Fax: +971-4-3688460

**• Singapore**

**Anritsu Pte. Ltd.**

60 Alexandra Terrace, #02-08, The Comtech (Lobby A)  
Singapore 118502  
Phone: +65-6282-2400  
Fax: +65-6282-2533

**• India**

**Anritsu Pte. Ltd.**

**India Branch Office**

Unit No. S-3, Second Floor, Esteem Red Cross Bhavan,  
No. 26, Race Course Road, Bangalore 560 001, India  
Phone: +91-80-32944707  
Fax: +91-80-22356648

**• P.R. China (Hong Kong)**

**Anritsu Company Ltd.**

Units 4 & 5, 28th Floor, Greenfield Tower, Concordia Plaza,  
No. 1 Science Museum Road, Tsim Sha Tsui East,  
Kowloon, Hong Kong  
Phone: +852-2301-4980  
Fax: +852-2301-3545

**• P.R. China (Beijing)**

**Anritsu Company Ltd.**

**Beijing Representative Office**  
Room 1515, Beijing Fortune Building,  
No. 5, Dong-San-Huan Bei Road,  
Chao-Yang District, Beijing 10004, P.R. China  
Phone: +86-10-6590-9230  
Fax: +86-10-6590-9235

**• Korea**

**Anritsu Corporation, Ltd.**

8F Hyunjuk Building, 832-41, Yeoksam Dong,  
Kangnam-ku, Seoul, 135-080, Korea  
Phone: +82-2-553-6603  
Fax: +82-2-553-6604

**• Australia**

**Anritsu Pty. Ltd.**

Unit 21/270 Ferntree Gully Road, Notting Hill,  
Victoria 3168, Australia  
Phone: +61-3-9558-8177  
Fax: +61-3-9558-8255

**• Taiwan**

**Anritsu Company Inc.**

7F, No. 316, Sec. 1, Neihu Rd., Taipei 114, Taiwan  
Phone: +886-2-8751-1816  
Fax: +886-2-8751-1817