

## OPTIONAL ACCESSORIES

### CALIBRATION COMPONENTS, 50 Ω



PART NUMBER	DESCRIPTION
ICN50B	InstaCal™ Calibration Module, 2 MHz to 6.0 GHz, N(m), 50 Ω
OSLN50-1	Precision Open/Short/Load, N(m), 42dB, 6.0 GHz, 50 Ω
OSLNF50-1	Precision Open/Short/Load, N(f), 42dB, 6.0 GHz, 50 Ω
2000-1618-R	Precision Open/Short/Load, 7/16 DIN(m), DC to 6.0 GHz 50 Ω
2000-1619-R	Precision Open/Short/Load, 7/16 DIN(f), DC to 6.0 GHz 50 Ω
22N50	Open/Short, N(m), DC to 18 GHz, 50 Ω
22NF50	Open/Short, N(f), DC to 18 GHz, 50 Ω
SM/PL-1	Precision Load, N(m), 42 dB, 6.0 GHz
SM/PLNF-1	Precision Load, N(f), 42 dB, 6.0 GHz

### CALIBRATION COMPONENTS, 75 Ω



22N75	Open/Short, N(m), DC to 3 GHz, 75 Ω
22NF75	Open/Short, N(f), DC to 3 GHz, 75 Ω
26N75A	Precision Termination, N(m), DC to 3 GHz, 75 Ω
26NF75A	Precision Termination, N(f), DC to 3 GHz, 75 Ω
12N50-75B	Matching Pad, DC to 3 GHz, 50 Ω to 75 Ω

### PHASE-STABLE TEST PORT CABLES, ARMORED W/ REINFORCED GRIP (recommended for cable & antenna line sweep applications)



15RNFN50-1.5-R	1.5 m, DC to 6 GHz, N(m) - N(f), 50 Ω
15RDFN50-1.5-R	1.5 m, DC to 6 GHz, N(m) - 7/16 DIN(f), 50 Ω
15RDN50-1.5-R	1.5 m, DC to 6 GHz, N(m) - 7/16 DIN(m), 50 Ω
15RNFN50-3.0-R	3.0 m, DC to 6 GHz, N(m) - N(f), 50 Ω
15RDFN50-3.0-R	3.0 m, DC to 6 GHz, N(m) - 7/16 DIN(f), 50 Ω
15RDN50-3.0-R	3.0 m, DC to 6 GHz, N(m) - 7/16 DIN(m), 50 Ω

### PHASE-STABLE TEST PORT CABLES, ARMORED (recommended for use with tightly spaced connectors and other general purpose applications)



15NNF50-1.5C	1.5 m, DC to 6 GHz, N(m) - N(f), 50 Ω
15NN50-1.5C	1.5 m, DC to 6 GHz, N(m) - N(m), 50 Ω
15NDF50-1.5C	1.5 m, DC to 6 GHz, N(m) - 7/16 DIN(f), 50 Ω
15ND50-1.5C	1.5 m, DC to 6 GHz, N(m) - 7/16 DIN(m), 50 Ω
15NNF50-3.0C	3.0 m, DC to 6 GHz, N(m) - N(f), 50 Ω
15NN50-3.0C	3.0 m, DC to 6 GHz, N(m) - N(m), 50 Ω

### ADAPTERS



1091-26-R	SMA(m) - N(m), DC to 18 GHz, 50 Ω
1091-27-R	SMA(f) - N(m), DC to 18 GHz, 50 Ω
1091-80-R	SMA(m) - N(f), DC to 18 GHz, 50 Ω
1091-81-R	SMA(f) - N(f), DC to 18 GHz, 50 Ω
1091-172	BNC(f) - N(m), DC to 1.3 GHz, 50 Ω
510-90	7/16 DIN(f) - N(m), DC to 7.5 GHz, 50 Ω
510-91	7/16 DIN(f) - N(f), DC to 7.5 GHz, 50 Ω
510-92	7/16 DIN(m) - N(m), DC to 7.5 GHz, 50 Ω
510-93	7/16 DIN(m) - N(f), DC to 7.5 GHz, 50 Ω
510-96	7/16 DIN(m) - 7/16 DIN (m), DC to 7.5 GHz, 50 Ω
510-97	7/16 DIN(f) - 7/16 DIN (f), DC to 7.5 GHz, 50 Ω
1091-379-R	7/16 DIN(f) - 7/16 DIN(f), DC to 6 GHz, 50 Ω, w/ Reinforced Grip
510-102-R	N(m) - N(m), DC to 11 GHz, 50 Ω, 90 degrees right angle

### PRECISION ADAPTERS



34NN50A	Precision Adapter, N(m) - N(m), DC to 18 GHz, 50 Ω
34NFN50	Precision Adapter, N(f) - N(f), DC to 18 GHz, 50 Ω

### MISCELLANEOUS ACCESSORIES



2000-1528-R	GPS Antenna, SMA(m)
69793	CW Signal Generator Kit
ODTF-1	Optical Distance-to-Fault Module, 1550 nm, Single Mode
2000-1520-R	USB Flash Drive
2000-1374	External Charger for Li-Ion Batteries

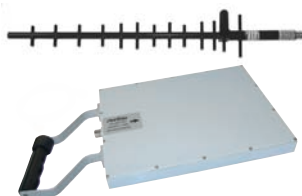
## OPTIONAL ACCESSORIES

### BACKPACK AND TRANSIT CASE



67135	Anritsu Backpack (For Handheld Instrument and PC)
760-243-R	Large Transit Case with Wheels and Handle

### DIRECTIONAL ANTENNAS



Part Number	Description
2000-1411-R	822-900 MHz, N(f), 10 dBd, Yagi
2000-1412-R	885-975 MHz, N(f), 10 dBd, Yagi
2000-1413-R	1710-1880 MHz, N(f), 10 dBd, Yagi
2000-1414-R	1850-1990 MHz, N(f), 9.3 dBd, Yagi
2000-1415-R	2400-2500 MHz, N(f), 10 dBd, Yagi
2000-1416-R	1920-2170 MHz, N(f), 10 dBd, Yagi
2000-1519	500 MHz to 3 GHz, log periodic

### PORTABLE ANTENNAS



2000-1200	806-866 MHz, SMA(m), 50 Ω
2000-1473	870-960 MHz, SMA(m), 50 Ω
2000-1035	896-941 MHz, SMA (m), 50 Ω (1/4 wave)
2000-1030	1710 to 1880 MHz, SMA(m), 50 Ω (1/2 wave)
2000-1474	1710 to 1880 MHz with knuckle elbow (1/2 wave)
2000-1031-R	1850 to 1990 MHz, SMA(m), 50 Ω (1/2 wave)
2000-1475	1920 to 1980 MHz and 2110 to 2170 MHz, SMA(m), 50 Ω
2000-1032-R	2400 to 2500 MHz, SMA(m), 50 Ω (1/2 wave)
2000-1361	2400 to 2500, 5000 to 6000 MHz, SMA(m), 50 Ω
61532	Antenna Kit (Consists of: 2000-1030, 2000-1031, 2000-1032-R, 2000-1200, 2000-1035, 2000-1361, and carrying pouch)

### BANDPASS FILTERS



1030-114-R	806-869 MHz, N(m) - SMA(f), 50 Ω
1030-109-R	824 - 849 MHz, N(m) - SMA (f), 50 Ω
1030-110-R	880 - 915 MHz, N(m) - SMA (f), 50 Ω
1030-105-R	890-915 MHz Band, 0.41 dB loss, N(m) - SMA(f), 50 Ω
1030-111-R	1850 - 1910 MHz, N(m) - SMA (f), 50 Ω
1030-106-R	1710-1790 MHz Band, 0.34 dB loss, N(m) - SMA(f), 50 Ω
1030-107-R	1910-1990 MHz Band, 0.41 dB loss, N(m) - SMA(f), 50 Ω
1030-112-R	2400 - 2484 MHz, N(m) - SMA (f), 50 Ω
1030-155-R	2500-2700 MHz, N(m) - N(f), 50 Ω

### ATTENUATORS



3-1010-122	20 dB, 5 W, DC to 12.4 GHz, N(m)-N(f)
42N50-20	20 dB, 5 W, DC to 18 GHz, N(m) - N(f)
42N50A-30	30 dB, 5 W, DC to 18 GHz, N(m) - N(f)
3-1010-123	30 dB, 50 W, DC to 8.5 GHz, N(m)-N(f)
1010-127-R	30 dB, 150 W, DC to 3 GHz, N(m) - N(f)
3-1010-124	40 dB, 100 W, DC to 8.5 GHz, N(m)-N(f), Uni-directional
1010-121	40 dB, 100 W, DC to 18 GHz, N(m)-N(f), Uni-directional
1010-128-R	40 dB, 150 W, DC to 3 GHz, N(m) - N(f)